

DRIVEN PNEUMATIC MINCE MEAT PORTIONING MACHINE

Mod. PNT

PARTS LIST



GASER

10. GENERAL DIAGRAM

10.1 General overview

Number	Description	Reference	Units
1	CHASSIS UNIT	PC010000-D	1
2	COVER UNIT	PC160000-D	1
3	LIGHT SENSOR UNIT	PC060000-D	1
4	LIGHT SENSOR MIRROR UNIT	PC060000-B	1
5	MOTOR	EL1420CA050060	1
6	CIRCUIT BOARD SUPPORT DPPM	PC590100-C	1
7	UNIT DPPM BELT	PC120000-E	1
8	DPPM BLADE UNIT	PC130000-F	1
9	FILTER REGULATOR WITH 1/4" PRESSURE GAUGE	17550000	1
10	STAINLESS WASHER M8 DIN125	FE0108M080000125	2
11	STAINLESS HEX SCREW M8 x 30 DIN933	FE0108M080300933	2
12	STAINLESS WASHER M10 DIN125	FE0108M100000125	2
13	STAINLESS HEX SCREW M10 x 25 DIN933	FE0108M100250933	2
14	STAINLESS WASHER M6 DIN125	FE0108M060000125	2
15	STAINLESS HEX SCREW M6 x 10 DIN933	FE0108M060100933	2
16	DPPM CONVEYOR BELT	PC360000	2
17	GEAR	SI0525MV0151	1
18	04-B1 CHAIN	SI1525C04B1	1
19	CHAIN HOOK	SI152604B1	1
20	CONTROL PANEL	PA0230COMPCN	1
21	DANGER SHARP EDGE STICKER	PA0230PT	1
22	DANGER STICKER	PA0230PE	1
23	TEARDROP TYPE GASER BRAND STICKER	PA0230GGASER	1

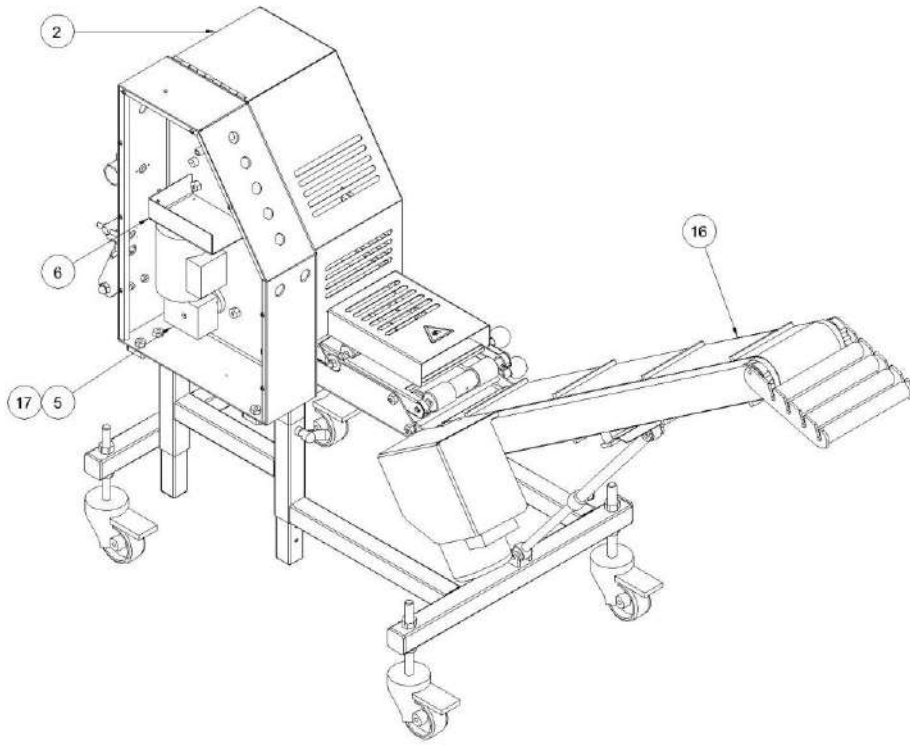


Figure 1, General overview 1

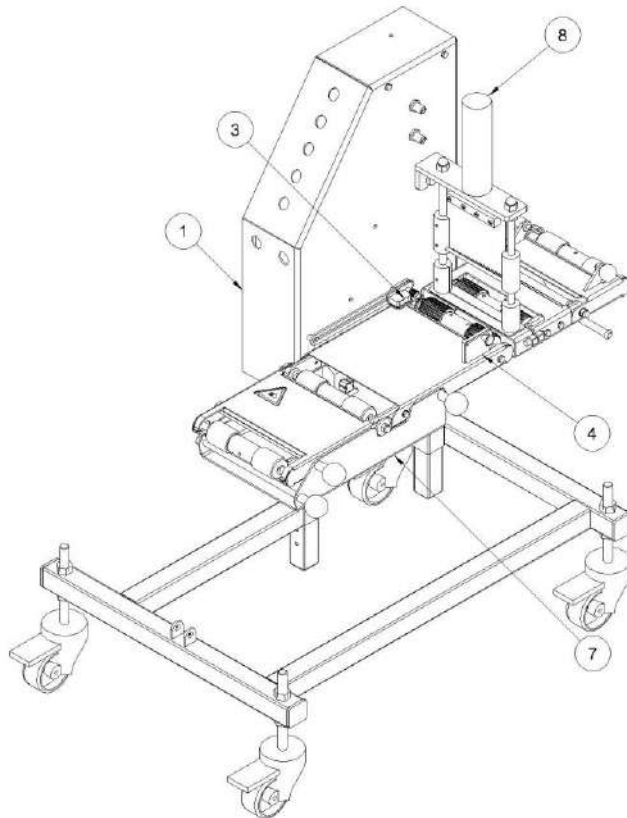


Figure 2, General overview 2

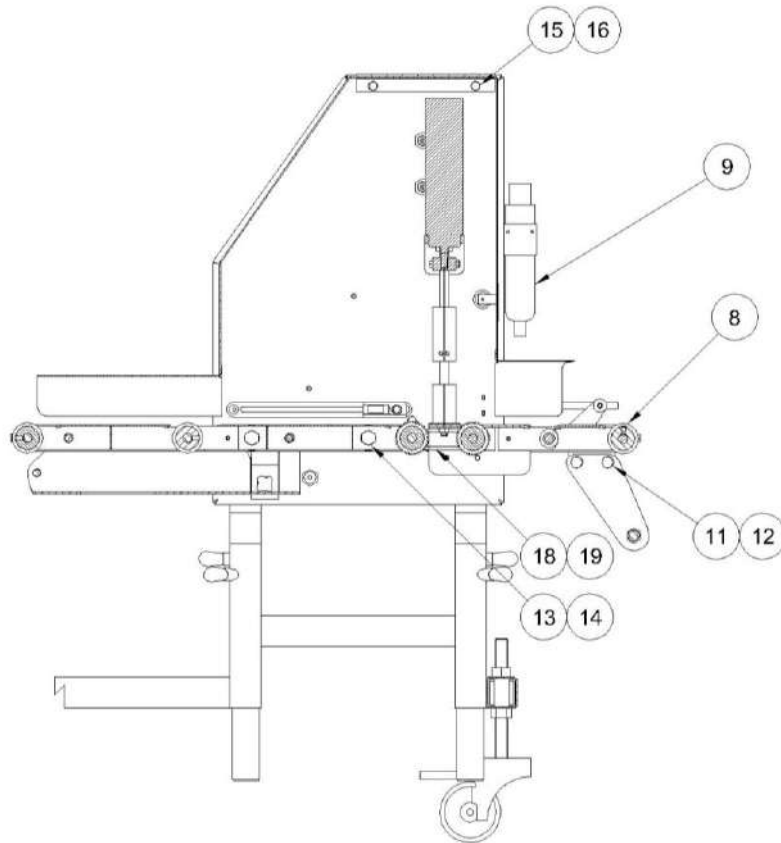


Figure 3, General overview 3



Figure 4, General overview 4

10.2 Chassis overview

Ref. PC010000-D

Position	Description	Reference	Units
1	DPPM CHASSIS	PC010100-D	1
2	BOX BEARING TAPE AND DPPM	30052100	1
3	MOTOR SPACER	PC013000-C	1
4	STAINLESS BEARING FOR Ø12 SHAFT	SI010960012RS	2
5	REAR COVER PORTIONER DPPM	PC013500	1
6	LIGHT SENSOR GUIDE	PC013600	1
7	M8 FIXING KNOB	00040200	1
8	FLAT HEAD STAINLESS ALLEN SCREW M6 x 16 DIN7991	FE0108M060167991	2
9	STAINLESS WASHER M6 DIN125	FE0108M060000125	3
10	STAINLESS HEX SCREW M6 x 16 DIN933	FE0108M060160933	3
11	STAINLESS CHEESE HEAD SCREW M5 x 12 DIN84	FE0108M050120084	8
12	GLAND CONNECTOR (F) 1/8"	NE0815RRPH18	2
13	MALE CONNECTOR Ø8 TUBE 1/8" CYL. THREAD	NE0815RRRM0818C	4
14	M12 x 1.5 PLASTIC GLAND	EL0220PMA12G	1
15	M12 x 1.5 PLASTIC GLAND NUT	EL0208TPM12	1

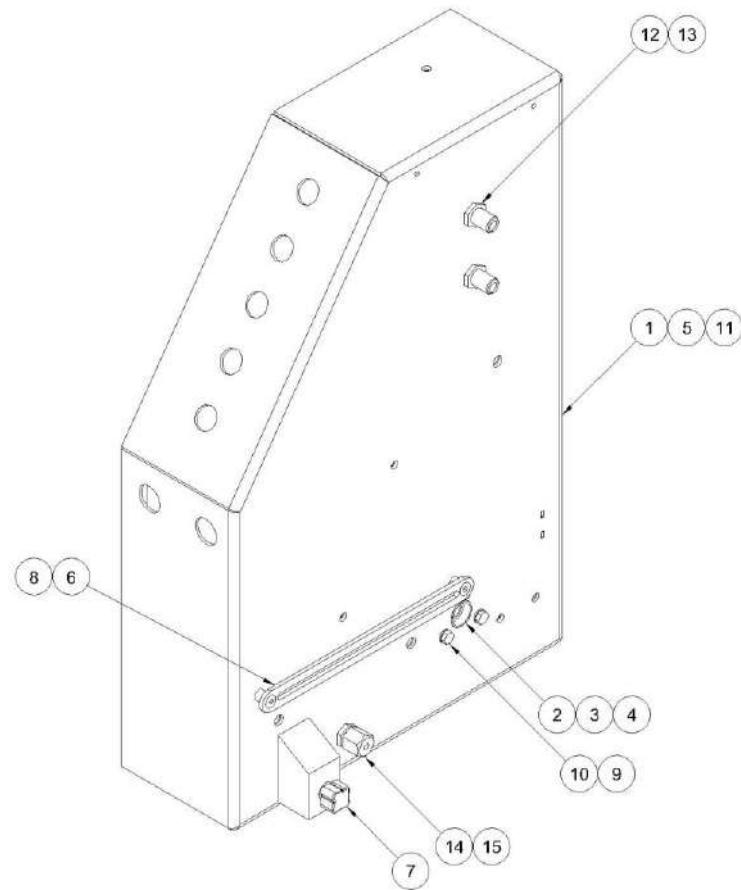


Figure 5, Chassis overview

10.3 Light sensor overview

Ref. PC060000-D

Position	Description	Reference	Units
1	LIGHT SENSOR SUPPORT	PC060100-D	1
2	PORTIONING MACHINE LIGHT SENSOR	EL0220FE3ZMRV81	1
3	LIGHT SENSOR SUPPORT GUIDE	PC060300	1
4	LONG KNOB	00100700	1

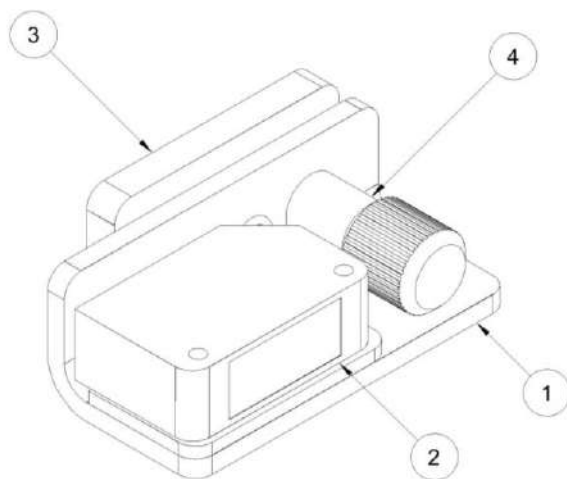


Figure 6, Light sensor overview

10.4 Light sensor mirror overview

Ref. PC060000-B

Position	Description	Reference	Units
1	ANTI-FOG RETRO-REFLECTOR	EL0220E39R1K	1
2	PEAR-SHAPED KNOB	SI0212PG19M05	1
3	MIRROR SUPPORT	PC060200	1

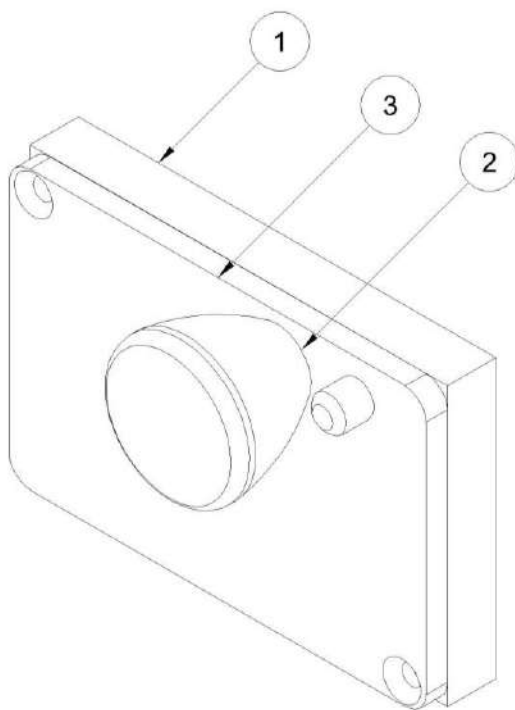


Image 7 Light sensor mirror overview

10.5 Belt overview

Ref. PC120000-E

Position	Description	Reference	Units
1	FIXED BELT CHASSIS	PC120100-D	1
2	CHASSIS-BELTS CONNECTION FLANGE	30140300-SP	2
3	MOBILE BELT	PC120200-D	1
4	BELT ARTICULATION SHAFT	PC120300-E	1
5	PAPER BEARING HOUSING	PC012600-C	1
6	INTERIOR BELT SHAFT BUSHING	00040600	2
7	INNER BELT TENSIONING AXLE	PC120700-E	1
8	TRAY SUPPORT	PC120400-D	1
9	STAINLESS RADIAL BEARING 10-19-7 68002RS	SI010968002RS	1
10	DRIVE ROLLER SHAFT	PC130200-E	1
11	DRIVE SPROCKET	PC120800	1
12	NOZZLE SUPPORT SHAFT	PC030300	3
13	STAINLESS PIN 4 × 4 × 20 DIN6885A	SI0109CH0420	1
14	STAINLESS HEX CAP NUT M8 DIN1587	FE0108M080001587	2
15	BELT WASHER	PC121000	2
16	STAINLESS ALLEN GRUB SCREW M4 × 4 DIN 913	FE0108M040040913	1
17	STAINLESS WASHER M6 DIN125	FE0108M060000125	3
18	STAINLESS HEX SCREW M6 × 16 DIN933	FE0108M060160933	3
19	STAINLESS HEX SCREW M6 × 30 DIN933	FE0108M060300933	2
20	INTERIOR CONVEYOR BELT DRIVEN ROLLER	38140700	1
21	INTERIOR BELT PASSIVE ROLLER	38140800	2
22	O-RING VITON FPM 70 SHA Ø10 × 3 mm	SI060901003	4
23	STAINLESS ALLEN GRUB SCREW M6 × 8 DIN913	FE0108M060080913	2
24	OUTLET METAL BAND	PC121500	1

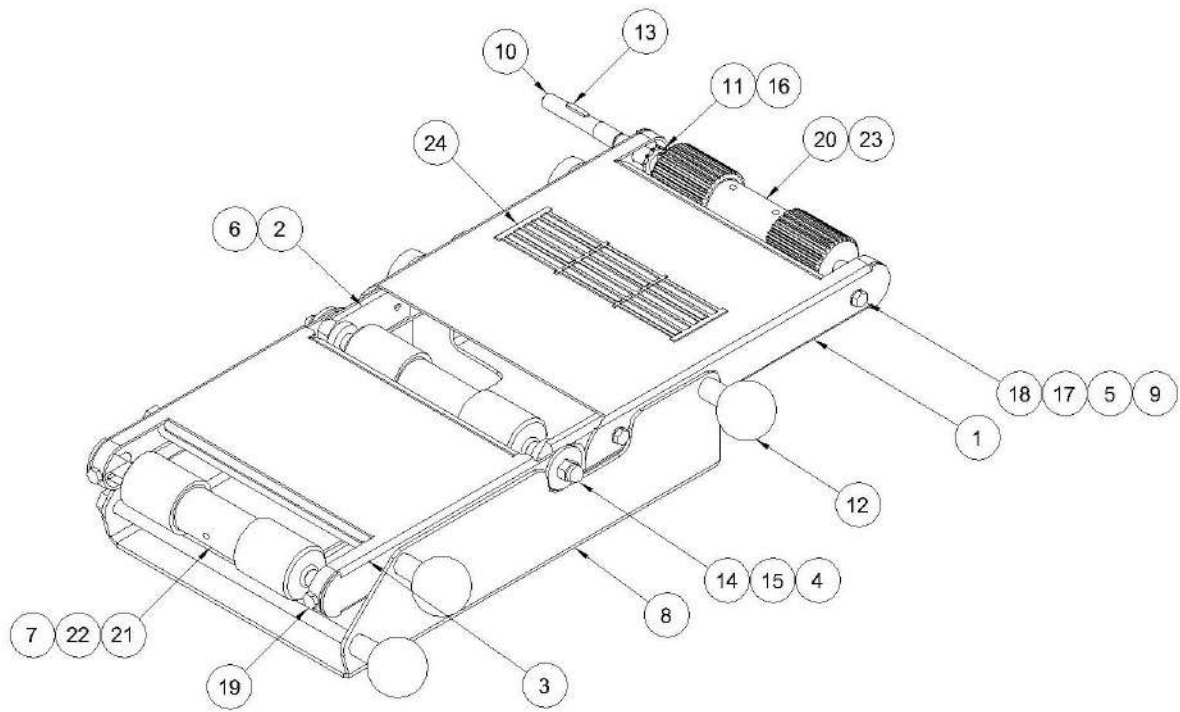


Image 8, Belt overview

10.6 Blade overview

Ref. PC130000-F

Position	Description	Reference	Units
1	BLADE SUPPORT	PC130100-E	1
2	BLADE GUIDE	PC011500-C	1
3	BLADE GUIDE SHAFT	PC020400-100	2
4	BLADE GUIDE LOWER BUSHING	PC021300	2
5	BLADE GUIDE	PC020200	2
6	REMOVER SHAFT	PC020300	2
7	BLADE GUIDE SUPPORT	PC021000-D	1
8	PNEUMATIC CYLINDER Ø40 x 100	NE1315040100	1
9	STAINLESS RADIAL BEARING 10-19-7 68002RS	SI010968002RS	2
10	STAINLESS HEX LOCK NUT M8 DIN985	FE0108M080000985	2
11	STAINLESS HEX SCREW M10 x 20 DIN933	FE0108M100200933	1
12	O-RING EPDM 70 SHA Ø7.3 x 2.4 mm	SI060907.32.4	1
13	STAINLESS CHEESE HEAD SCREW M5 x 35 DIN84	FE0108M050350084	4
14	STAINLESS HEX LOCK NUT M5 DIN985	FE0108M050000985	4
15	STAINLESS HEX. NUT THIN M10 DIN 439	FE0108M100000936	1
16	O-RING VITON FPM 70 SHA Ø10 x 3 mm	SI060901003	2
17	STAINLESS HEX NUT M10 DIN934	FE0108M120000934	2
18	STAINLESS HEX CAP NUT M6 DIN1587	FE0108M120001587	2
19	STAINLESS HEX NUT M10 DIN934	FE0108M100000934	1
20	STAINLESS HEX CAP NUT M10 DIN1587	FE0108M100001587	1
21	STAINLESS HEX SCREW M6 x 16 DIN933	FE0108M060160933	4
22	STAINLESS WASHER M6 DIN125	FE0108M060000125	4
23	STAINLESS ALLEN GRUB SCREW M6 x 8 DIN 913	FE0108M060080913	9
24	BLADE SUPPORT	30060700	1
25	BLADE	PC020100-100	1
26	SPINDLE SHAFT LUG	PC130400	1
27	SPOOL SHAFT	PC010700	1
28	PAPER ROLLER BEARING HOUSING	PC012600-C	2
29	PAPER TOOTHED ROLLER SHAFT	PC012100-D	1
30	DRIVEN PAPER COG	PC120900	1
31	BELT BLADE FORK PIN	PC131000	1
32	STAINLESS ALLEN GRUB SCREW M4 x 4 DIN 913	FE0108M040040913	1
33	BELT ARTICULATION SHAFT	PC120300-E	1
34	INTERIOR CONVEYOR BELT DRIVEN ROLLER	38140700	1

35	INLET FOLDING BELT CHASSIS	PC131100	1
36	CHASSIS-BELTS CONNECTION FLANGE	30140300-SP	2
37	INNER BELT TENSIONING AXLE	PC120700-E	1
38	INTERIOR BELT PASSIVE ROLLER	38140800	1
41	INTERIOR BELT SHAFT BUSHING	00040600	2
42	STAINLESS WASHER M8 DIN125	FE0108M080000125	2
43	STAINLESS HEX CAP NUT M8 DIN1587	FE0108M080001587	2
44	O-RING VITON FPM 70 SHA Ø10 x 3 mm	SI060901003	4
45	ECCENTRICS FIXING KNOB	33000200	1
46	STAINLESS HEX SCREW M6 x 30 DIN933	FE0108M060300933	2
47	PROXIMITY DETECTOR UNIT	PC150000-D	1
48	INLET METAL BAND	PC131500	1

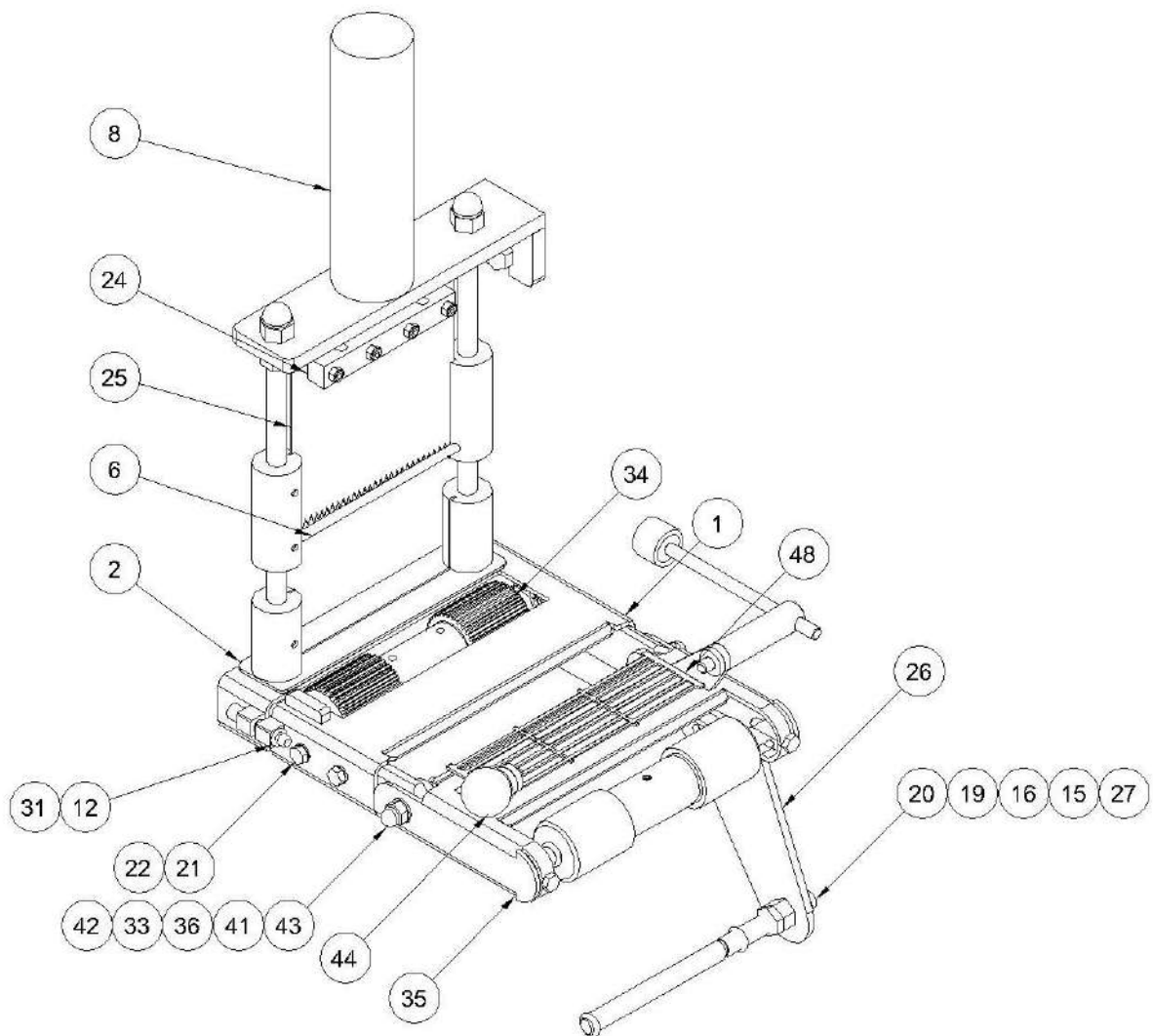


Figure 1, Blade overview 1

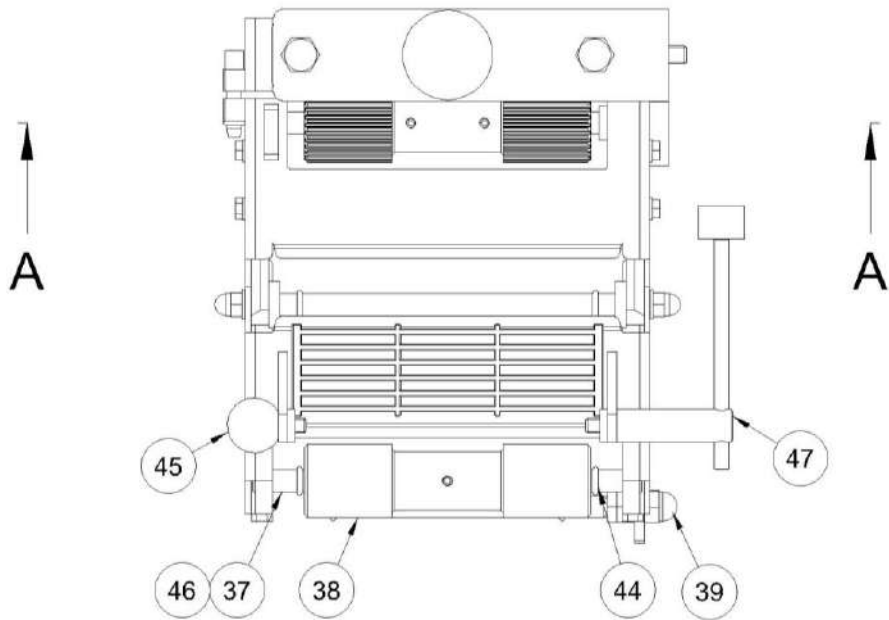


Figure 10, Blade overview 2

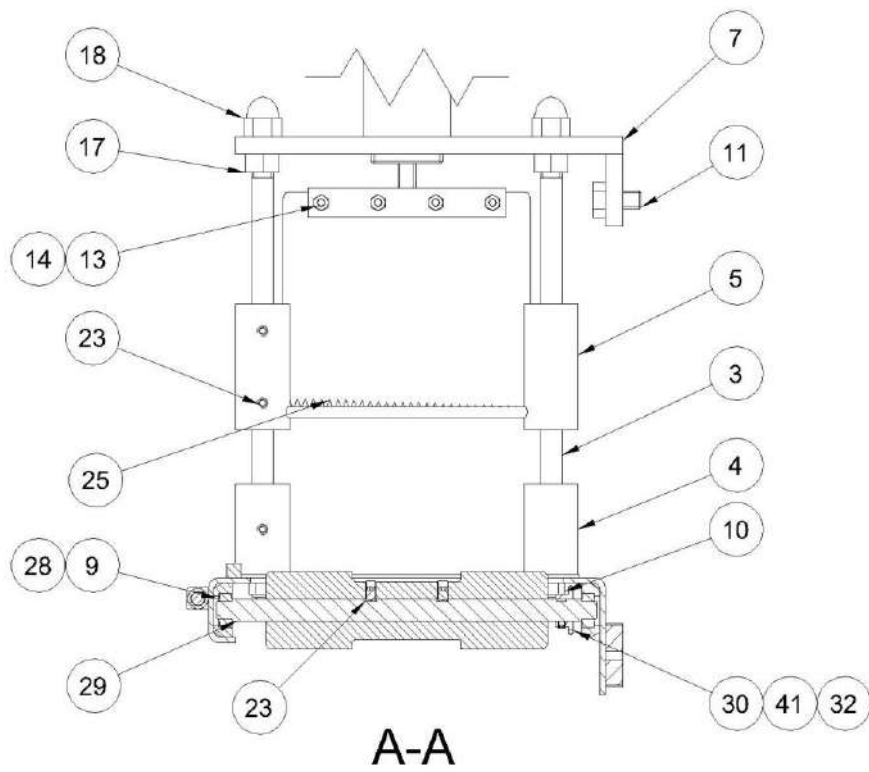


Figure 11, Blade overview 3

10.7.1 Proximity detector overview

Ref. PC150000-D

Position	Description	Reference	Units
1	PROXIMITY DETECTOR UPPER BODY	PC150100-D	1
2	STAINLESS ALLEN GRUB SCREW M6 x 6 DIN 913	FE0108M060060913	1
3	PROXIMITY SENSOR ROD	PC150200-D	1
4	PROTECTION MAGNET	30161600	1
5	MAGNET	EL2020BP10	1
6	PROXIMITY SENSOR THREADED ROD	PC150300	1
7	MAGNET GUARD COVER	30161700	1
8	STAINLESS HEX SCREW M4 x 30 DIN963	FE0108M040300965	1

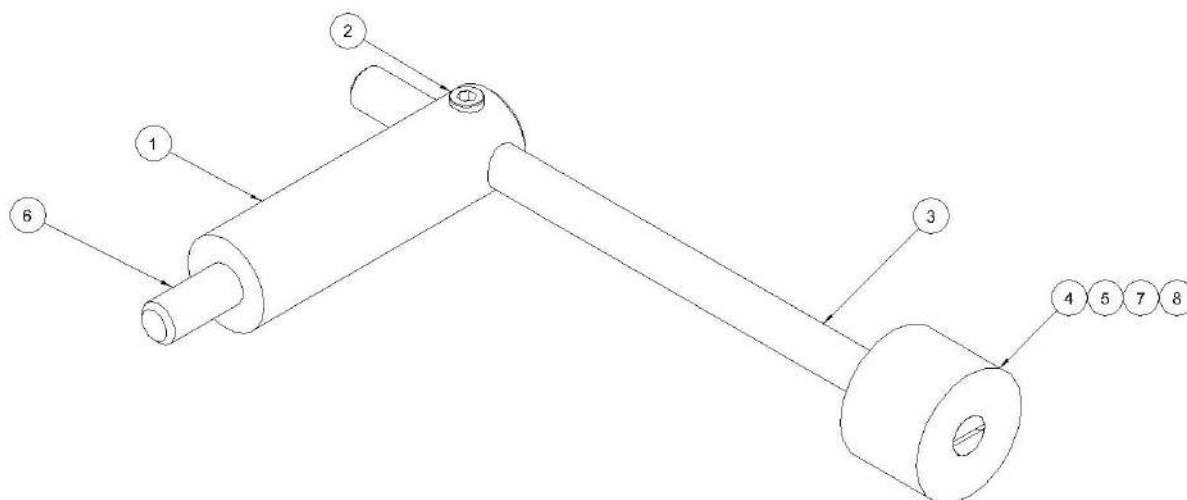


Figure 12, Protector overview 1

10.8 Protector overview

Ref. PC160000-D

Position	Description	Reference	Units
1	MAIN GUARD	PC161200-D	1
2	BALL KNOB Ø30 M8	SI0212ESF32M08	1
3	LONG CLOSING PIN	00170100	1
4	DOOR MAGNET PROTECTION	30161600	1
5	MAGNET GUARD COVER	30161700	1
6	SCHMERSAL BP-10 MAGNET	EL2020BP10	1
7	STAINLESS CHEESE HEAD SCREW M4 × 30 DIN963	FE0108M040300965	1
8	BUSHING FOR CLOSERS	00170200	1
9	SHARP EDGE HAZARD STICKER	PA0230PT	2

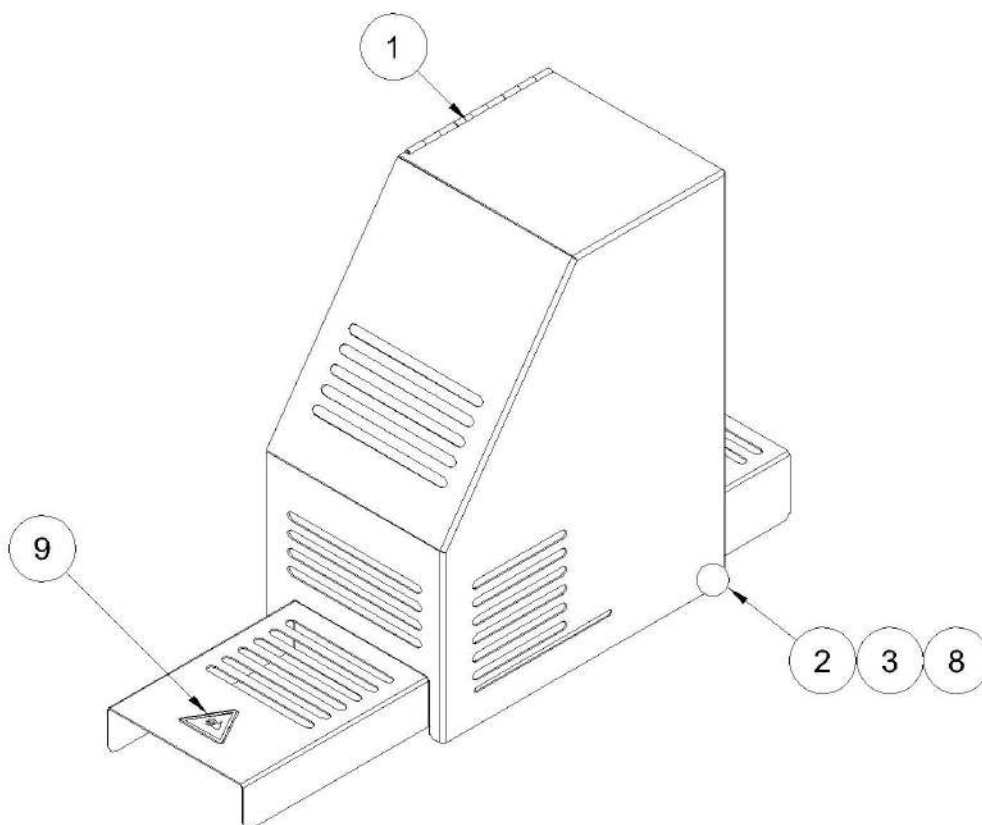


Figure 13, Protector overview 1

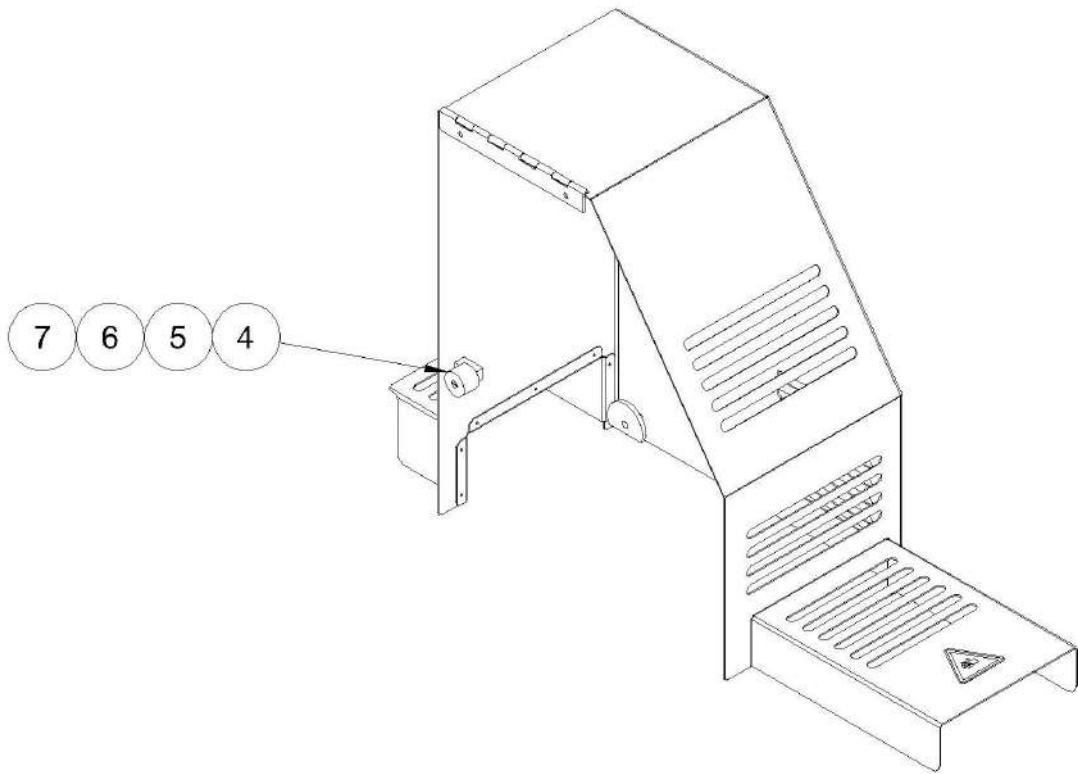


Figure 14, Protector overview 2

10.9 Conveyor belt overview (optional)

Ref. PC360000

Position	Description	Reference	Units
1	TELESCOPIC TUBE	PC090900-D	1
2	DPPM BELT SUPPORT	PC090200-D	1
3	BELT CHASSIS	00350100	1
4	FORWARDING CARRIAGE ROLLERS	PC100200	1
5	FORWARDING BELT ROLLER	PC100100	4
6	MOTOR	PLEASE CONSULT	1
7	BELT MOTOR GUARD	00350300	1
8	BELT MOTOR LUG	PC091000	2
9	KNOB	20230600	1
10	TELESCOPIC TUBE INNER SHAFT	PC090800	1
11	GEAR	PLEASE ASK	

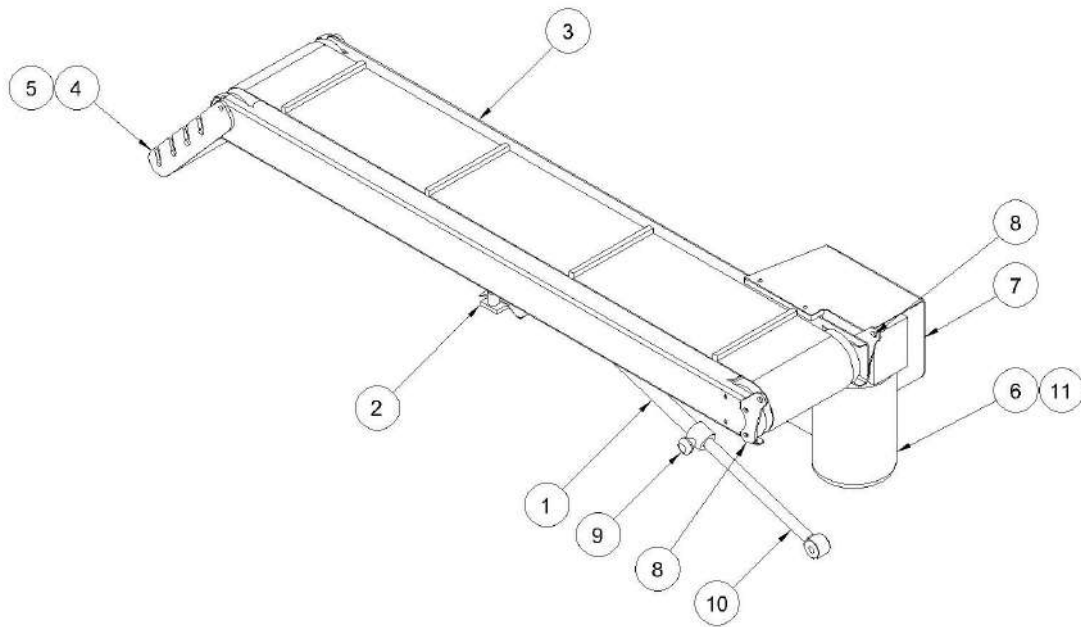


Image 15, Conveyor belt overview

10.10 Adjustable mincer base overview

Ref. PC370000

Position	Description	Reference	Units
1	ADJUSTABLE DPPM BASE BODY	PC370100	1
2	BLUE POLYAMIDE WHEEL WITH STAINLESS STEEL BRAKE	SI0125NOX9RX	4
3	DPPM HEIGHT ADJUSTMENT SHAFT	PC370300	4
4	STAINLESS HEX NUT M16 DIN934	FE0108M160000934	8
5	MEAT OUTLET CONTROL	00040400	4
6	DPPM HEIGHT ADJUSTMENT TELESCOPIC TUBE	PC370200-A	1
7	DPPM HEIGHT ADJUSTMENT TELESCOPIC TUBE	PC370200-B	1
8	STAINLESS HEX LOCK NUT M12 DIN985	FE0108M120000985	4
9	SQUARE TUBE CAP 40 x 40	SI0226TC4040N	4

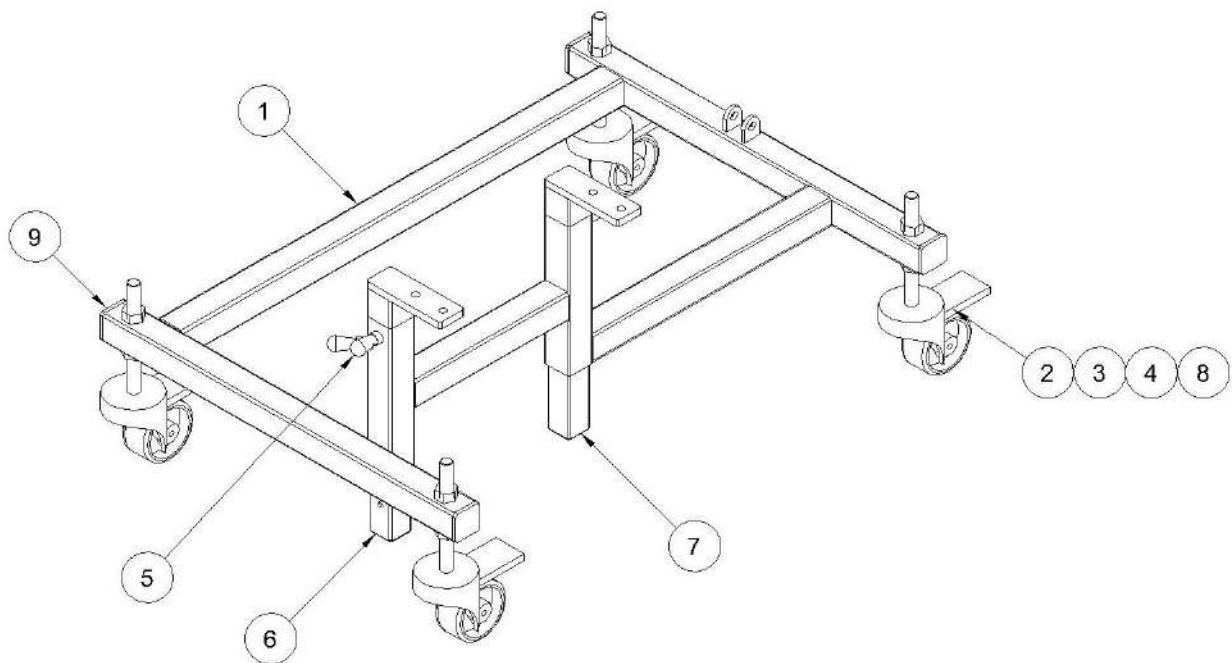


Figure 16, Adjustable mincer base overview

10.11 Adjustable filler base overview

Ref. PC320000

Position	Description	Reference	Units
1	TABLE BODY	PC320100	1
2	BLUE POLYAMIDE WHEEL WITH STAINLESS STEEL BRAKE	SI0125NOX9RX	4
3	BUSHING Øi25-Øe26-ALT25	SI020902602025	1
4	THREADED SLEEVE HOUSING	PC330200	1
5	THREADED SLEEVE	PC330300	1
6	DPPM-FILLER GUIDE SUPPORT	PC320400	1
7	DPPM-FILLER THREADED POSITION SHAFT	PC320600	1
8	POSITION KNOB	PC330600	1
9	INTERIOR GUIDE	PC320500	1
10	GUIDE SHAFT	PC320300	1
11	UPPER GUIDE SUPPORT	PC320200	1
12	STAINLESS ALLEN GRUB SCREW M6 x 6 DIN 913	FE0108M060060913	2
13	STAINLESS WASHER M10 DIN125	FE0108M100000125	8
14	STAINLESS HEX LOCK NUT M10 DIN985	FE0108M100000985	8
15	STAINLESS HEX SCREW M10 x 25 DIN933	FE0108M100250933	8
16	STAINLESS HEX SCREW M10 x 40 DIN933	FE0108M100400933	4
17	STAINLESS CHEESE HEAD SCREW M6 x 10 DIN84	FE0108M060100084	1
18	STAINLESS ALLEN GRUB SCREW M6 x 16 DIN913	FE0108M060160913	1

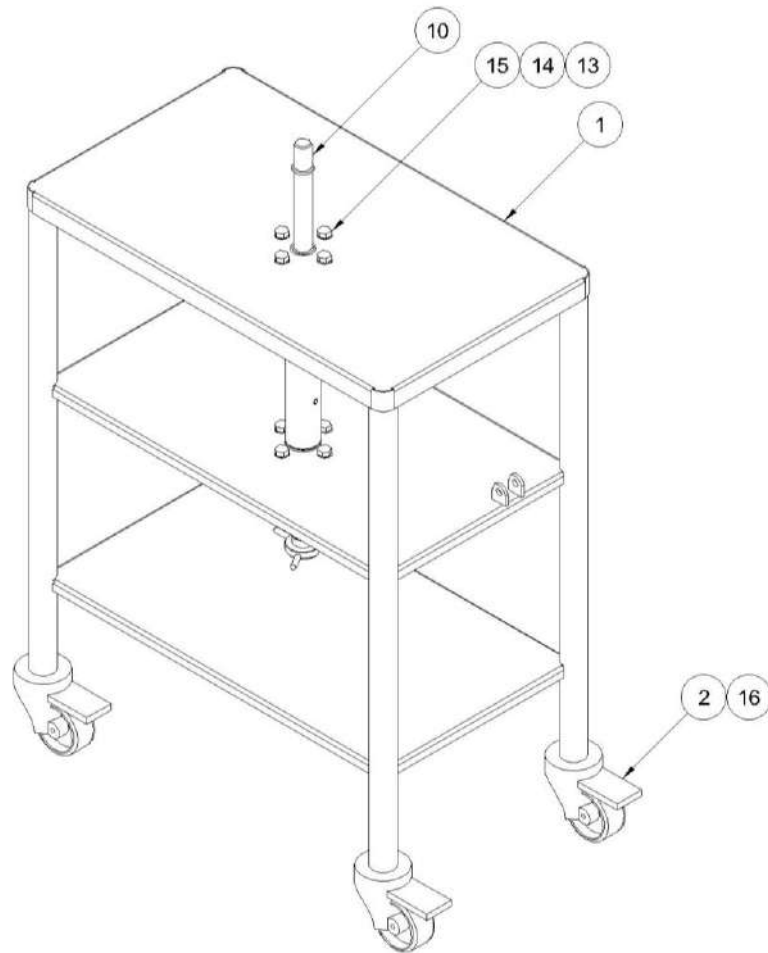


Figure 17, Adjustable filler base overview

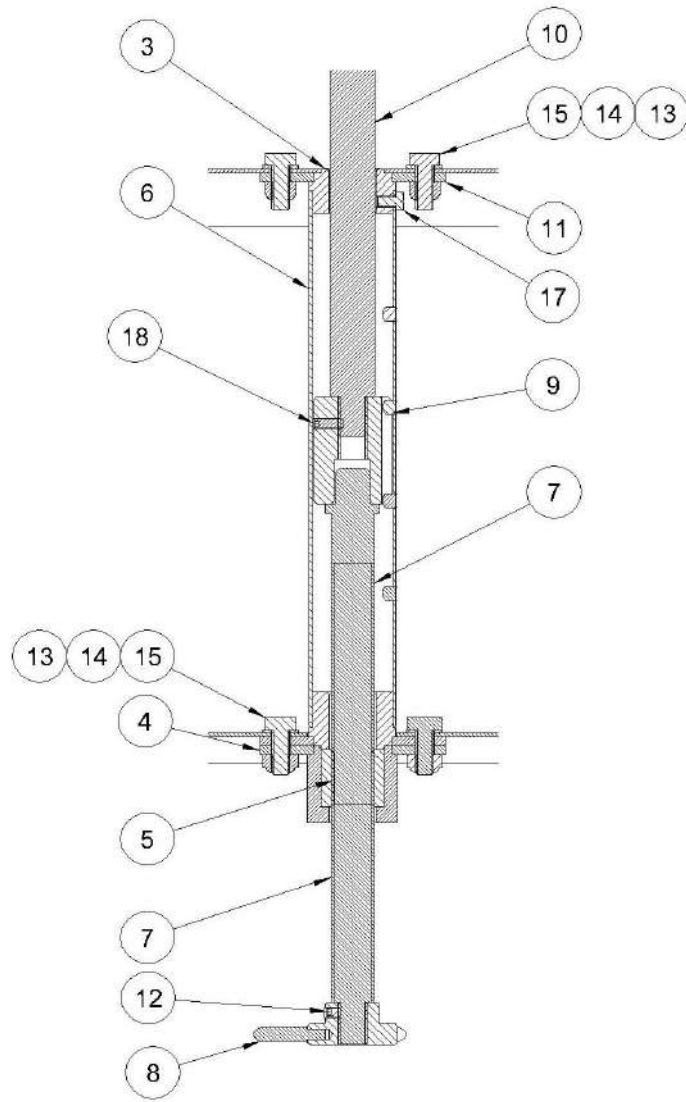


Figure 18, Adjustable filler base overview

10.12 Installation overview

Position	Description	Reference	Units
1	BLUE ILLUMINATED BUTTON	EL2320PRLA	1
2	EMERGENCY STOP BUTTON.	EL2320PEB	1
3	DUAL BUTTON	EL2320PDRV	1
4	MANUAL-AUTOMATIC SWITCH	EL2320S3P	
5	POTENTIOMETER UNIT	22550000	
6	MAIN SWITCH 20A	EL1320IL20A	1
7	5P FEMALE CONNECTOR COVER	EL0821TCN5P	
8	40 W TRANSFORMER	EL1420TP040	1
9	CIRCUIT BOARD	PC590000	1
10	SAFETY SWITCH	EL2020BNS120	2
11	CONTINUOUS FILLER CONNECTOR	30760000	1
12	RELAY BASE	EL0220PYF14AN	1
13	RELAY	EL0920RMY4I4N24	1
14	THERMAL-MAGNETIC CIRCUIT BREAKER 1P+N 6A	EL0402MG6ACIN	1
15	THERMAL-MAGNETIC CIRCUIT BREAKER 1P+N 10A	EL0402MGIN10A	1
16	5P FEMALE CONNECTOR	EL0821CHE5P	1
17	FREQUENCY CONVERTOR	PC660000	1
18	SAFETY RELAY	EL1120PNOZX28P	1
19	ELECTRICALLY-OPERATED VALVE 1/4	NE0315EV5214	1
20	24VCA SPOOL	NE0915BV2450	1



Figure 19, Installation overview 1

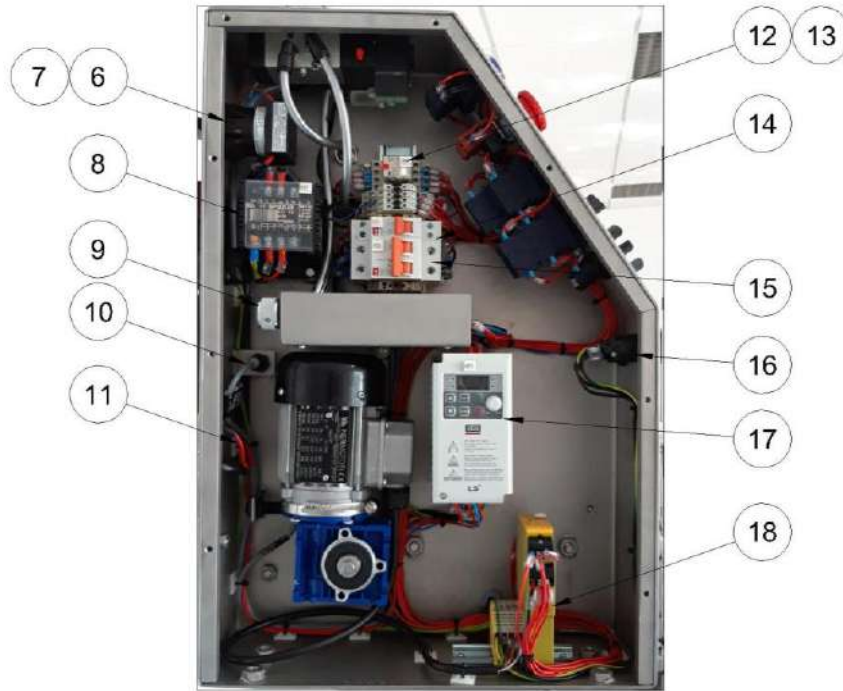


Figure 20, Installation overview 2

10.13 Nozzle overview

Ref. Please ask

Position	Description	Reference	Units
1	NOZZLE	PLEASE CONSULT	1
2	NOZZLE KNOB	PC032200-E	4
3	WARNING	PLEASE CONSULT	1
4	STRIP	PLEASE CONSULT	1
5	STAINLESS CHEESE HEAD SCREW M6 × 8 DIN84	FE0108M060080084	3
6	COUPLING FUNNEL	PLEASE CONSULT	1
7	STAINLESS CHEESE HEAD SCREW M6 × 16 DIN84	FE0108M060160084	3
8	STAINLESS ALLEN GRUB SCREW M6 × 8 DIN 913	FE0108M060080913	1
9	MEAT OUTLET CONTROL	00040400	2

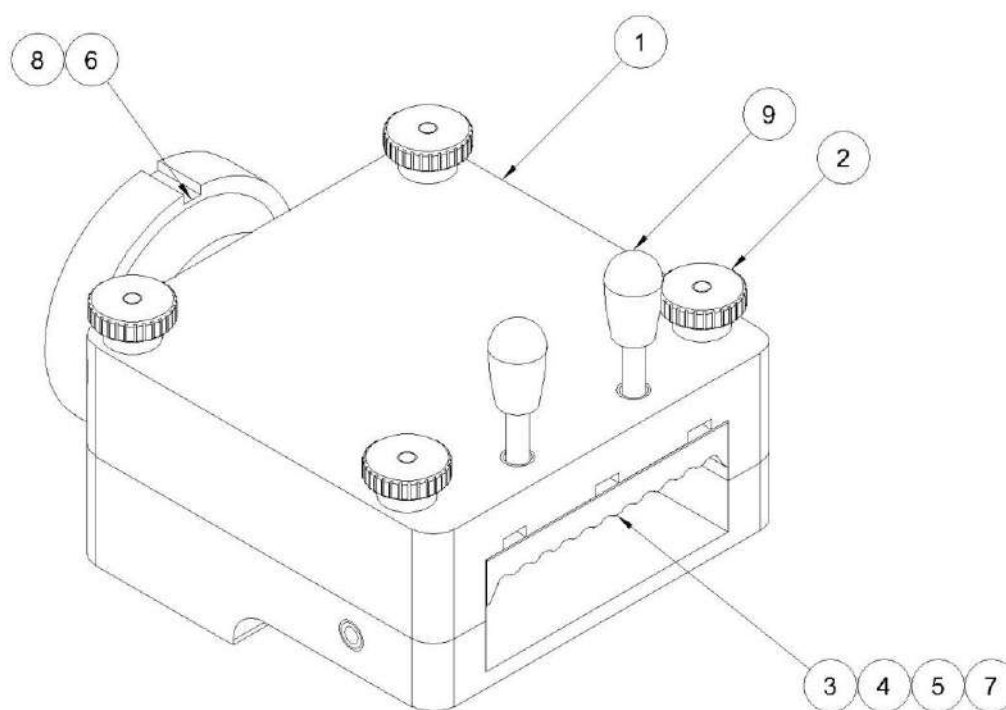


Image 20, Nozzle overview

10.14 Meat entry overview

Ref. Please ask

Position	Description	Reference	Units
1	MEAT INLET PLATE 125 mm	PC034001-125	1
2	MEAT ENTRY SUPPORT PIVOT	PC034003	2
3	MEAT ENTRY SUPPORT	PC034002	1
4	MEAT OUTLET CONTROL	00040400	2

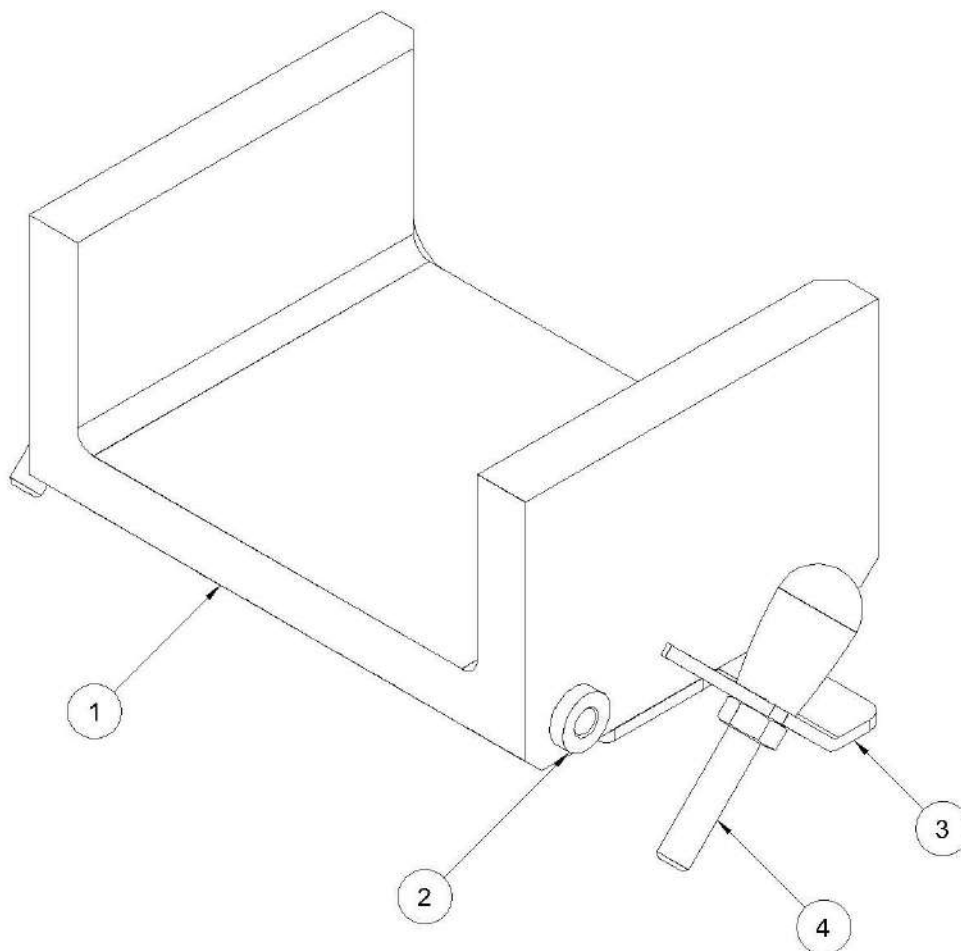


Image 21, Nozzle overview

11. PNEUMATIC DIAGRAMS

Position	Description	Reference	Units
1	PNEUMATIC CYLINDER Ø40 × 100	NE1315040100	1
2	ELECTRICALLY-CONTROLLED VALVE 1/4	NE0315EV5214	1
3	GENERAL PRESSURE GAUGE	NE0215M12B40	1
4	FILTER CONTROL 3/8" 0-8B	NE0215FR08B38	1

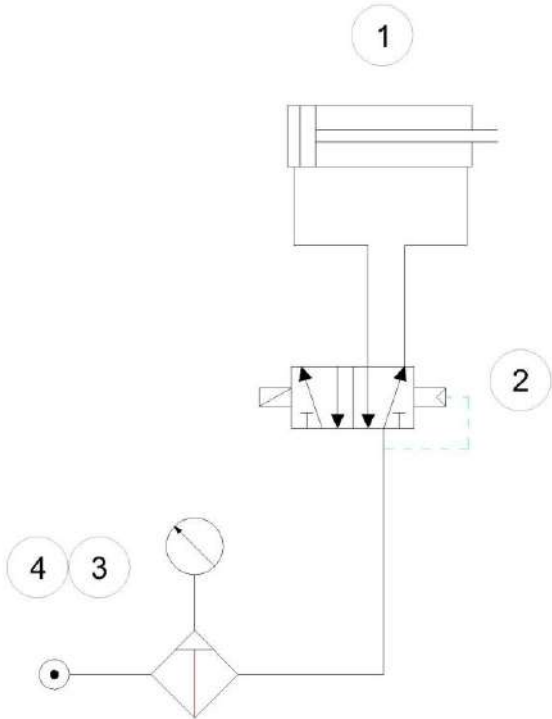


Diagram 1, Pneumatic diagram

12. WIRING DIAGRAMS

12.1 Portioning machine-Continuous filler connection

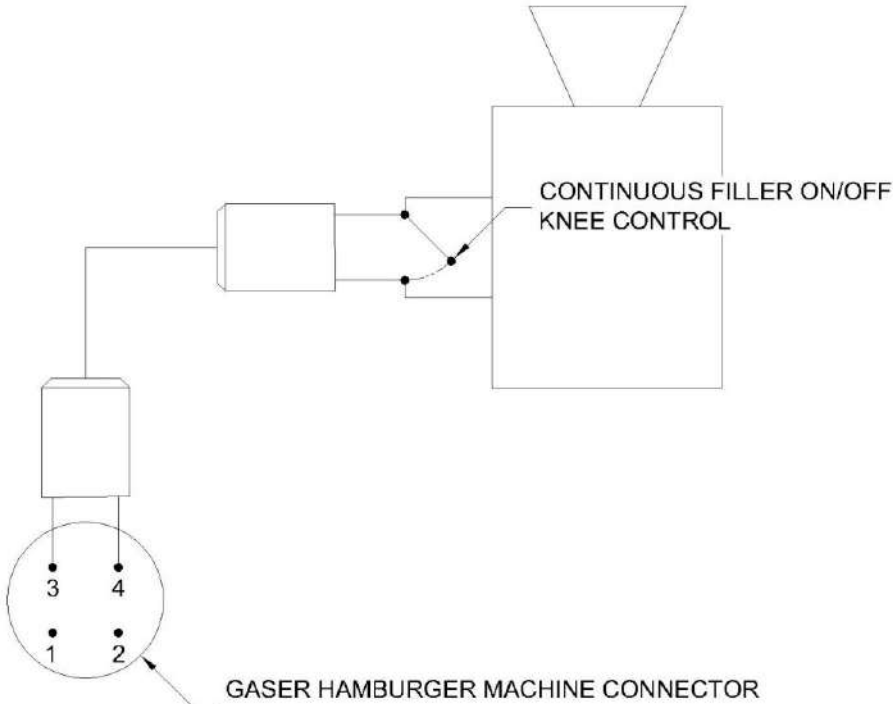


Diagram 2, Connection between portioning machine and continuous filler



INDUSTRIAS GASER

**Ctra. Bescanó, 15, Pol. Torre Mirona
17190 Salt (Girona) - Spain**

Tel. +34 972 23 65 72

Proyecto : PORCIONADOR AUTO

Nombre :

Cliente :

Cliente Final :

Año de Construcción : 2017

Línea de Suministro : NYY 4x1,5mm²

Tensión Alimentación : 110 V AC

Tensión Maniobra : 24 V

Frecuencia : 50/60 Hz

Consumo (A) : 5

Potencia (Kw) : 3

Total Páginas : 6

Página Posterior:

Página Siguiente: +EAA/2

Fecha Creación : 21/05/2017	
Responsable : LLFF	
Modificado: 04/08/2017	Código Cliente : 092
Modificado por : LLFF	Núm. Diseño : IEC_1p001

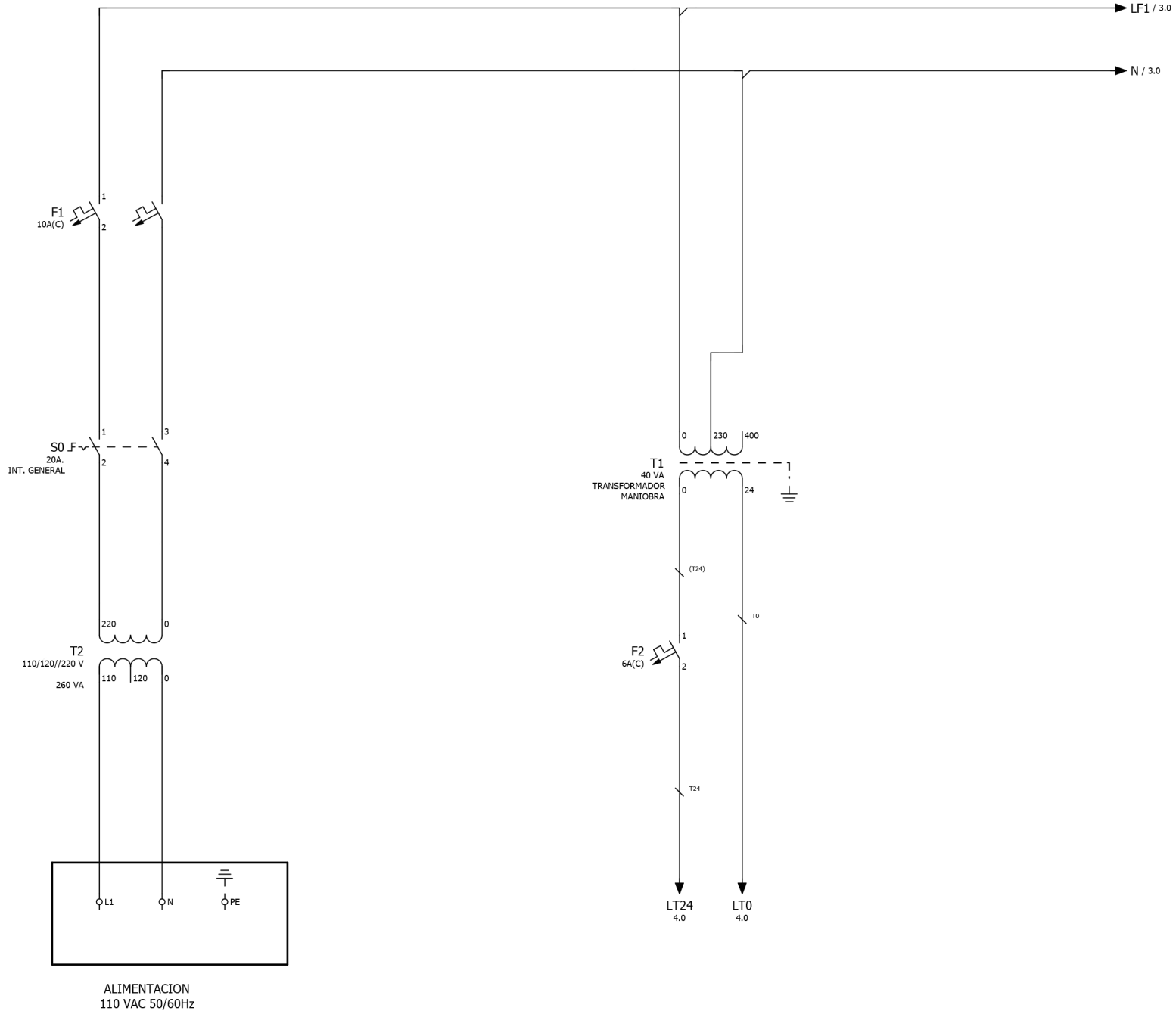
Cliente :
Proyecto : PORCIONADOR AUTO



INDUSTRIAS GASER
Ctra. Bescanó, 15, Pol. Torre Mirona
17190 Salt (Girona) - Spain
Tel. +34 972 23 65 72

Denominación Página:
PORTADA

= ANE
+ DDT
Hoja: 1
Total Hojas: 6



Fecha Creación : 21/06/2017	
Responsable : LLFF	
Modificado: 04/08/2017	Codigo Cliente : 092
Modificado por : LLFF	Núm. Diseño : IEC_tp001

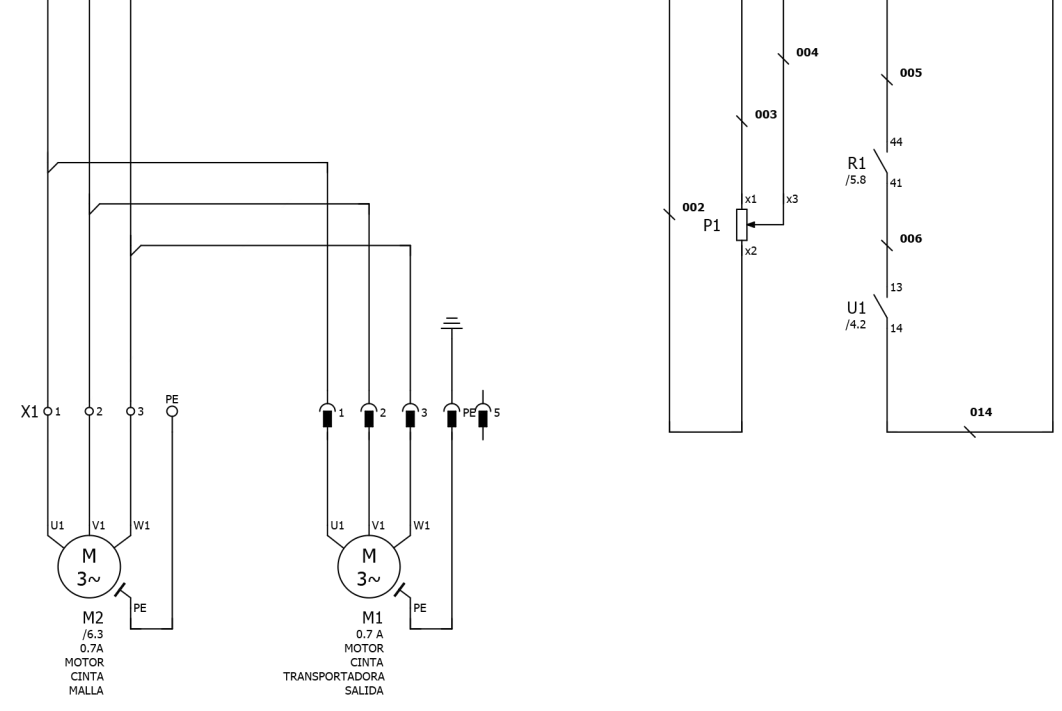
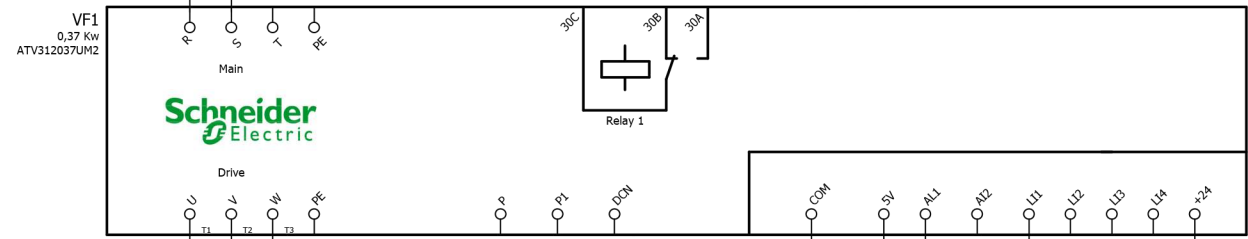
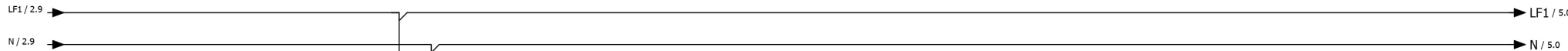
Cliente :	
Proyecto :	PORCIONADOR AUTO



INDUSTRIAS GASER
 Ctra. Besanó, 15, Pol. Torre Mirona
 17190 Salt (Girona) - Spain
 Tel. +34 972 23 65 72

Denominación Página:
 ALIMENTACION POTENCIA

= ANL
+ EAA
Hojas: 2
Total Hojas: 6



Fecha Creación : 21/06/2017	
Responsable : LLFF	
Modificado: 04/08/2017	Codigo Cliente : 092
Modificado por : LLFF	Núm. Diseño : IEC_tp001

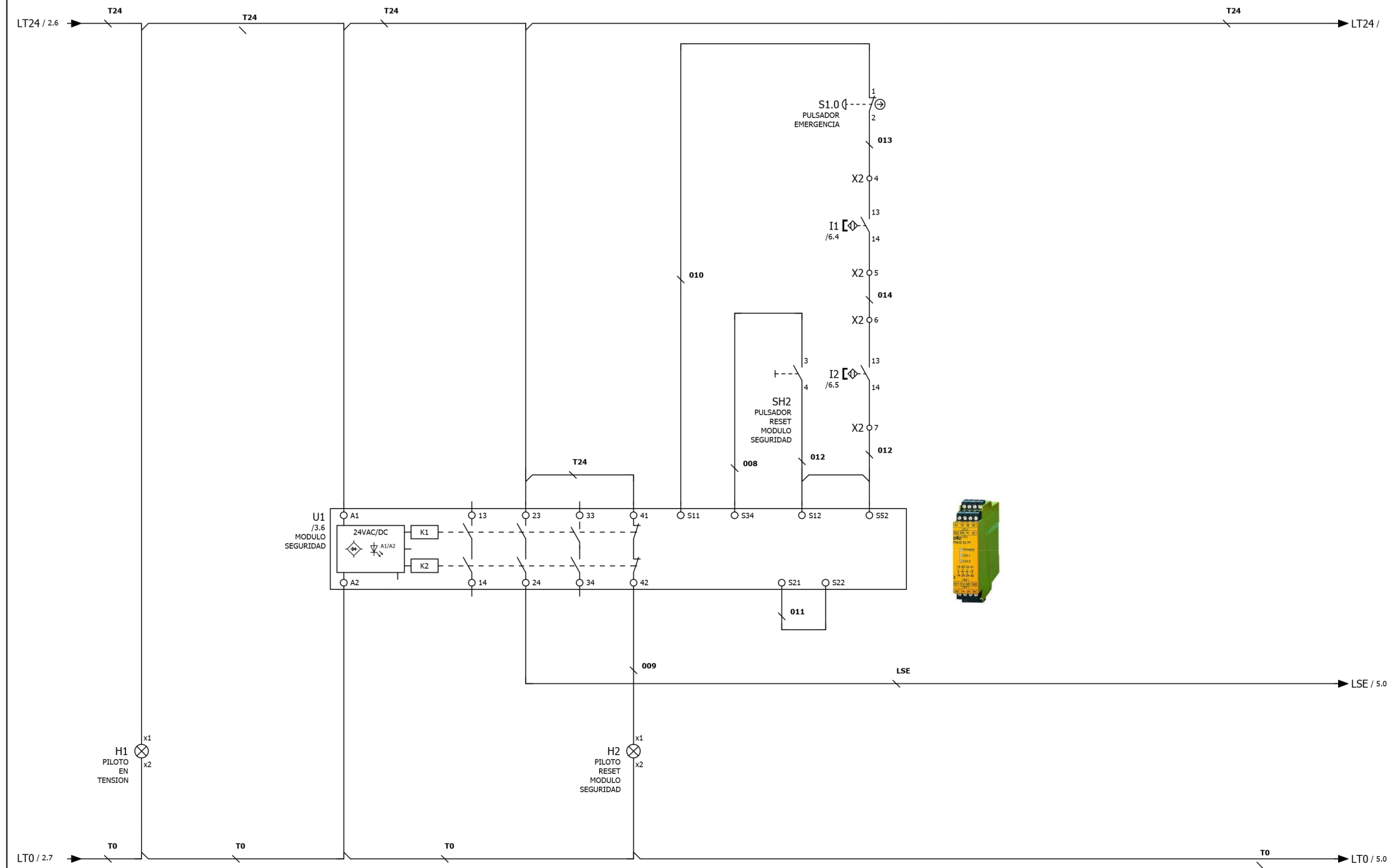
Cliente :	
Proyecto : PORCIONADOR AUTO	



INDUSTRIAS GASER
 Ctra. Besanó, 15, Pol. Torre Mirona
 17190 Salt (Girona) - Spain
 Tel. +34 972 23 65 72

Denominación	Página:
POTENCIA 1	

= ANL
+ EAA
Hojas: 3
Total Hojas: 6



Fecha Creación :	21/06/2017
Responsable :	LLFF
Modificado:	04/08/2017
Modificado por :	LLFF

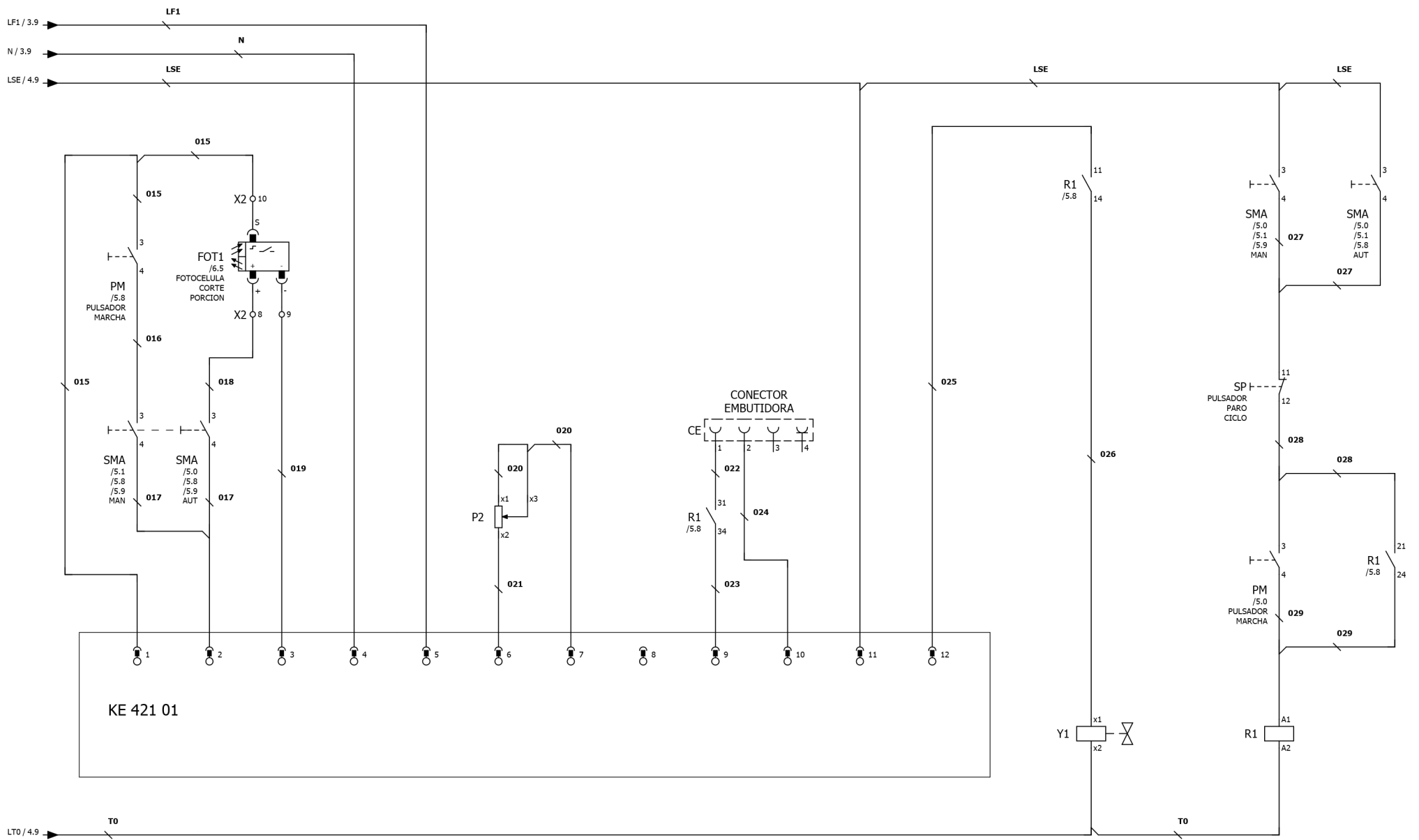
Codigo Cliente :	092
Núm. Diseño :	IEC_tp001

Cliente :	
Proyecto :	PORCIONADOR AUTO

GASER
INDUSTRIAS GASER
 Ctra. Besenó, 15, Pol. Torre Mirona
 17190 Salt (Girona) - Spain
 Tel. +34 972 23 65 72

Denominación	Página:
MODULO SEGURIDAD	

= ANL
+ EAA
Hojas: 4
Total Hojas: 6



- 11 - 14 /5.7
- 21 - 24 /5.9
- 31 - 34 /5.4
- 44 - 41 /3.6
- RELE AUXILIAR MARCHA CICLO

Página Posterior: 4

Página Siguiente: 6

Fecha Creación : 21/06/2017	
Responsable : LLFF	
Modificado: 04/08/2017	Codigo Cliente : 092
Modificado por : LLFF	Núm. Diseño : IEC_tp001

Cliente :
 Proyecto : PORCIONADOR AUTO

GASER
 INDUSTRIAS CASER
 Ctra. Besanó, 15, Pol. Torre Mirona
 17190 Salt (Girona) - Spain
 Tel. +34 972 23 65 72

Denominación Página:
 PLACA CONTROL

= ANL
+ EAA
Hojas: 5
Total Hojas: 6

Conexión De Bornes

Nombre																																																													
X1																																																													
Número Cable																																																													
Puentes																																																													
Número de Borne											1	2	3	PE											WHITE	BROWN											WHITE	BROWN											6	9	10										

FX1

