







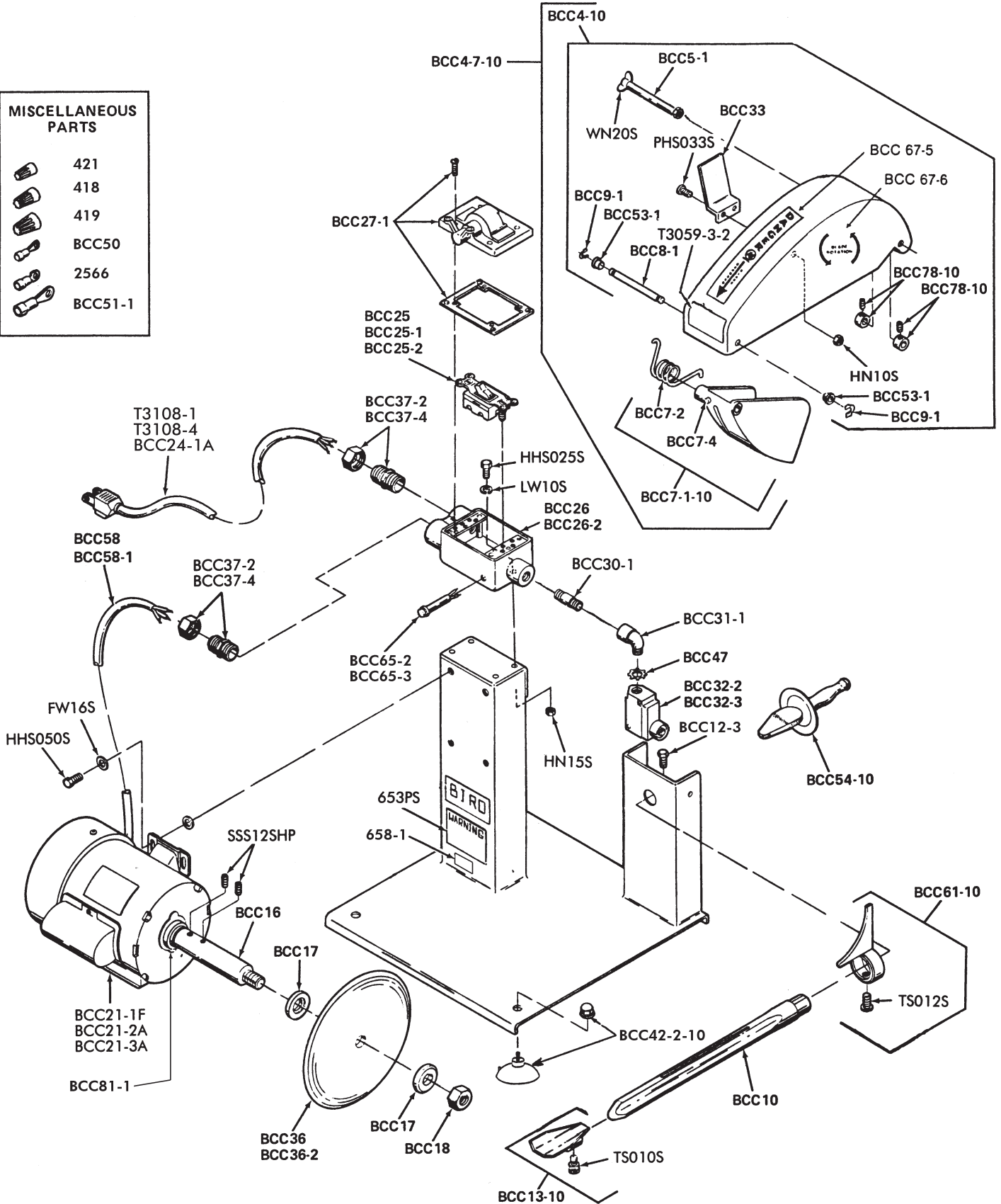
IMPORTANT: Must have Serial Number when ordering parts

PARTS LIST MODEL BCC-100 APPLICABLE FROM SERIAL NO. 500 ON

Item No.	Part Name	Item No.	Part Name
BCC 4-10	Knife cover assembly	BCC 54-10	Knife hone with Guard
BCC 4-7-10	Knife cover finger guard assembly	BCC 58	Motor extension cord 1 phase
BCC 5-1	Knife cover hinge stud bolt	BCC 58-1	Motor extension cord 3 phase
BCC 7-1-10	Finger guard assembly w/spring & bumper	BCC 59	California extension guard, 5½ (not shown)
BCC 7-2	Finger guard torsion spring #7330 on	BCC 60-1	California ext. guard clamp (not shown)
BCC 7-4	Finger guard bumper, Delrin #8447 on	BCC 61-10	Backguard assembly
BCC 8-1	Finger guard hinge stud #8325 on	BCC 65-2	Pilot light 115V #8783 on
BCC 9-1	Finger guard retainer ring s/n 8325 on	BCC 65-3	Pilot light 220V #8783 on
BCC 10	Knife guide bar 1"	BCC 67-5	"Danger Exposed Blade" decal
BCC12-3	Hex head screw ⅜-16 × 1, SS	BCC 67-6	"Blade Rotation" decal
BCC 13-10	Knife guide trough complete	BCC 78-1	Knife cover position retainer #7851 on *NSS
BCC 16	Extension shaft	BCC 78-10	Knife cover position retainer with set screw #7851
BCC 17	Extension shaft collar (2 req.) each	BCC 81-1	Motor Shaft Slinger
BCC 18	Extension shaft collar nut	FW16S	Flat washer ⅝ × ⅞ × ⅛ TK, SS
BCC21-1F	Motor, ¾HP, 115/230-60-1	HHS025S	Hex head screw ¼-20 × ½ SS
BCC21-2A	Motor, ¾HP, 115/220-50-1	HHS050S	Hex head screw ⅝-18 × ⅝, SS
BCC21-3A	Motor, ¾HP, 220/440-50/60-3	HN10S	Hex nut 10-32, SS
BCC 24-1A	Motor cord and plug 3 phase	HN15S	Hex nut ¼-20 × ⅞ AF × ⅞ TH, SS
BCC 25	Motor switch toggle 115V – 1PH	LW10S	Lock washer ¼, SS
BCC 25-1	Motor switch toggle 3 phase	PHS033S	Pan head screw 10-32 × ⅜, SS
BCC 25-2	Motor switch toggle 220V – 1PH	SSS12SHP	Set screw – half dog point ¼-20 × ⅝, SS
BCC 26	Switch box	T3059-3-2	Caution decal
BCC 26-2	Switch box for 3 phase switch	T3108-1	Motor cord & plug – 115V
BCC 27-1	Switch box cover complete w/gasket & cover screws	T3108-4	Motor cord and plug 220V – 1P
BCC 30-1	Switch box outlet nipple	TS010S	Thumb screw 10-32 × ½, SS
BCC 31-1	Switch box elbow	TS012S	Thumb screw 10-32 × ¾, SS
BCC 32-2	Interlock switch — 1 phase	WN20S	Wing nut ⅜-16, SS
BCC 32-3	Interlock switch — 3 phase	2566	Solderless Ground Terminal, R4B-10
BCC 33	Interlock switch lever	418	Wire Nut 73B
BCC 36	Knife blade 9"	419	Wire Nut 74B
BCC 36-2	Knife blade 9" serrated	421	Wire Nut - Blue
BCC 37-2	Connector	653PS	Warning label – pressure sensitive
BCC 37-4	Connector, 3 ph	658-1	Label, made in USA
BCC 42-2-10	Suction cup foot assembly		
BCC 47	Electrical lock nut		
BCC 49-1	Wire nut 74B		
BCC 50	Solderless terminal RA4-6S		
BCC 51-1	Ground terminal motor, R1C-14S		
BCC 53-1	Delron bushing, #8325 on		

BIRO Model BCC-100 Poultry Processing Machine

MISCELLANEOUS PARTS	
	421
	418
	419
	BCC50
	2566
	BCC51-1



IMPORTANT: Must have Serial Number when ordering parts