

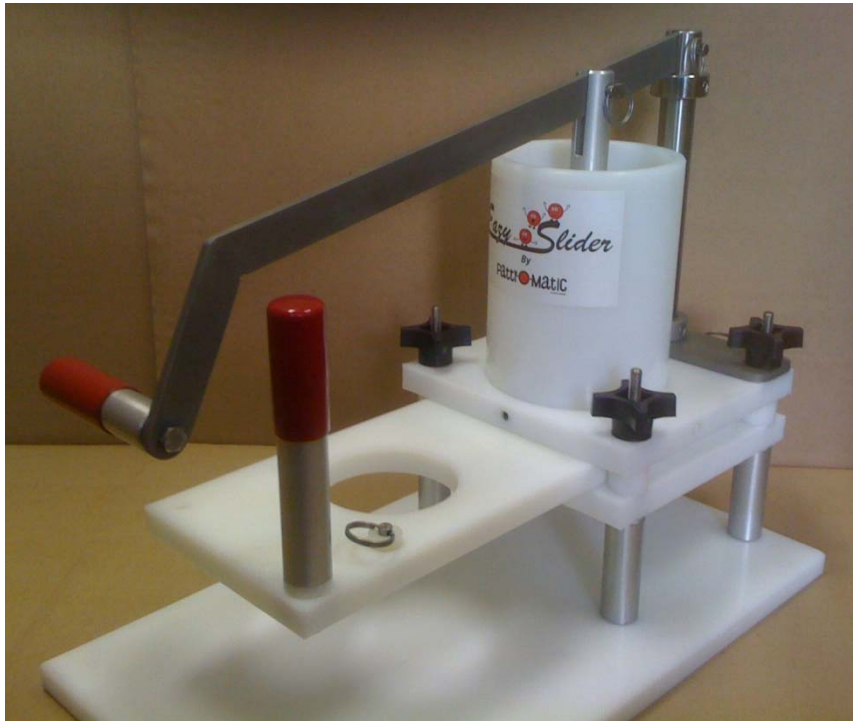
Easy Slider

By
Patty-Matic

© PATTY PERING

Food Portioning and Forming Machine

Owner's Manual and Parts List



Parts Included in shipping



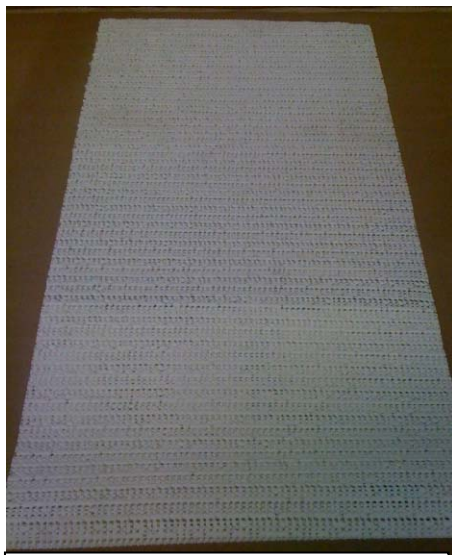
(1) Complete Eazy Slider Machine.
(Mold May Be Different)



(2) Clamps. Used to
secure machine to work
table.



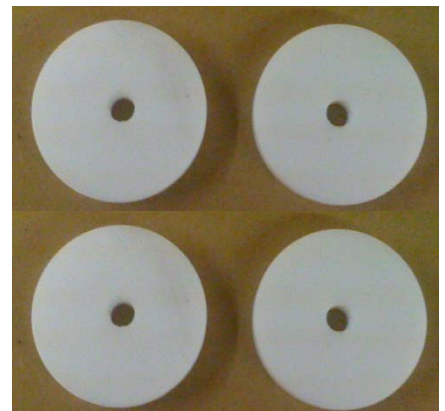
(4) Spacer Stanchions.
Used for different Mold
Plate thicknesses. May
Be Plastic



(1) Non Slip Pad. Used under
Machine Base to help keep
machine from moving on work
table. (Optional Use)



(2) Spare Wing Nuts.



(4) Clamp Pads. Use on top and
bottom of Clamp to protect
machine and table surfaces.
(Optional Use)

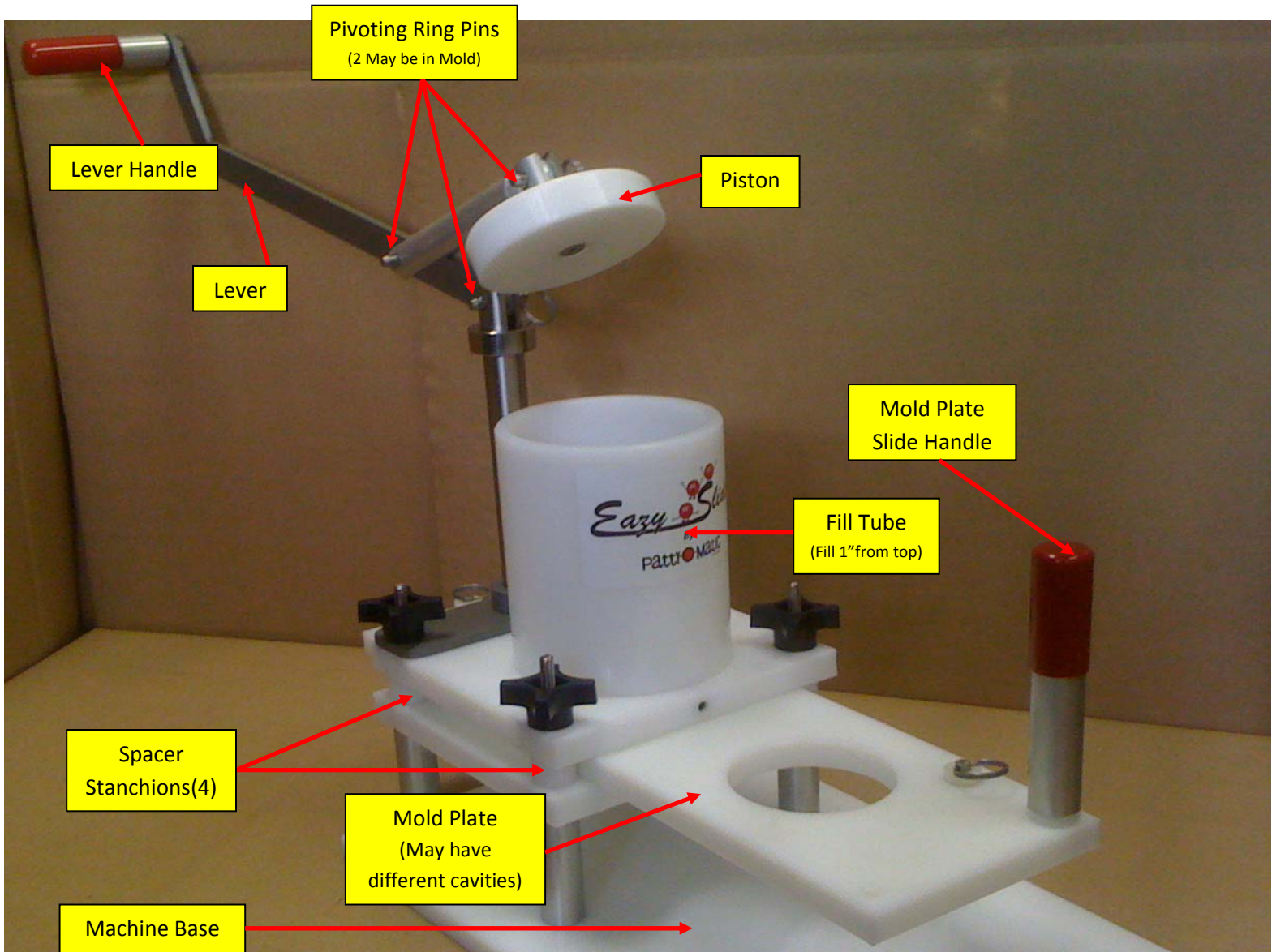


(2) Spare Ring Pins w/
mold plate stop washers.
Used to limit Mold Plate
movement, also used as
pivoting ring pin.

Holes can be placed in the Machine Base to mount machine to the work table.

Operating Instructions

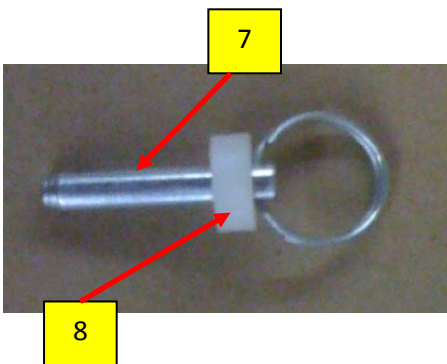
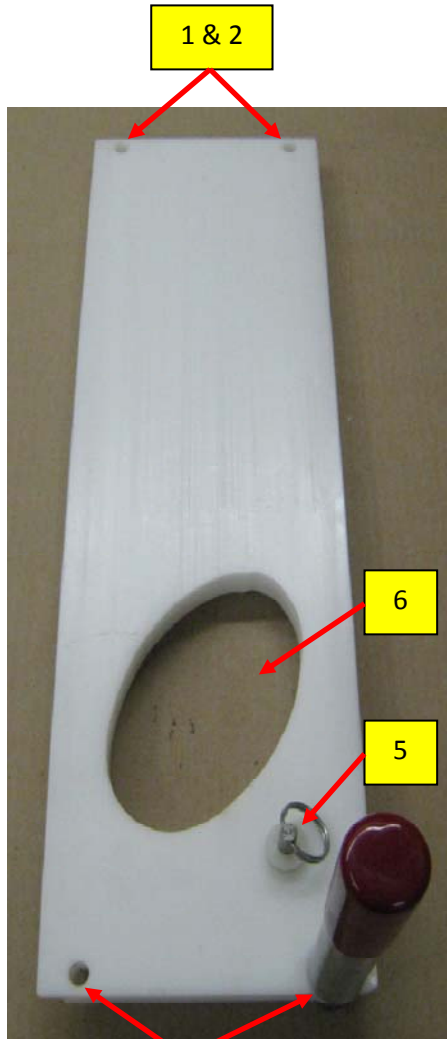
The Eazy Slider Machine is used to portion and form food products.



1. Secure Machine to work Table. Put product in the fill tube. Fill up to 1 inch from the top of the tube.
2. Place piston into the fill tube on top of the product.
3. Grip the Mold Plate Handle and slide the Eazy Slider Mold Plate into machine.
4. Pull down on the lever handle to fill the mold cavity. While keeping a slight pressure on the lever handle, with you other hand, grip around the mold plate handle and slide out until the mold cavity is fully exposed.
5. Remove patty from the mold and repeat steps 1-4.

For Operator's preference, the Lever Handle and the Mold Plate Slide Handle may be attached to opposite sides.

Mold Plate Hole Descriptions



1 & 2. By placing a ring pin(7) in either hole 1 or 2, you will stop the forward movement of the mold plate, thus keeping it in position during production. Extra holes may be added to the plate to fit the operator's preference.

3 & 4. These are mounting holes for the Eazy Slider Mold Plate Handle. Only one hole is necessary. Your machine was originally shipped with the handle assembled in the right hole(4), but it may be moved to the left hole(3) for operator's preference. Be sure to switch the Lever Handle on the Piston Lever(not shown) to the opposite side if you switch the Mold Plate Handle to the opposite side.

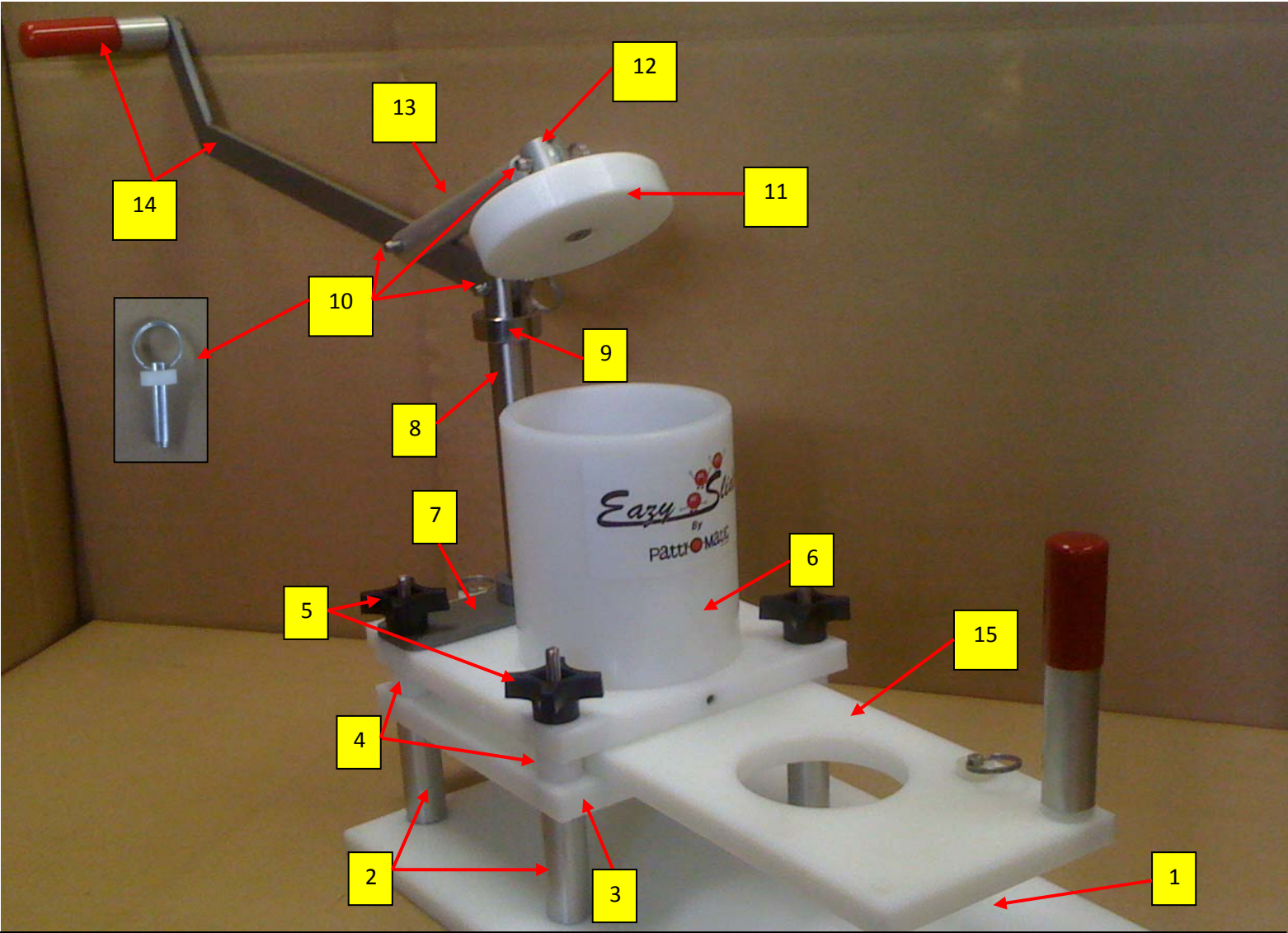
5. If a ring pin(7) is placed in this hole, it will stop the backward movement of the mold plate. The mold cavity will be completely hidden during the filling process. However, it may be preferred to place a washer collar(8) over the ring pin, resulting in a small portion of the mold cavity being visible, so you can see when the product has filled the cavity.

6. Mold Cavity hole may be a different shape or multiple cavities.

7. Ring Pins are used to stop mold plate movement as described earlier.

8. Washer Collar for optional use as described.

Parts Breakdown



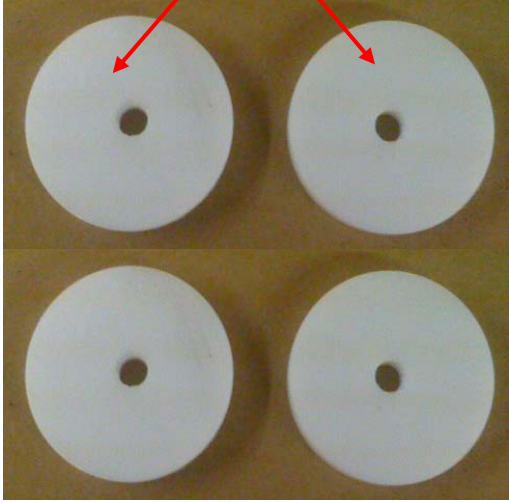
<u>Item#</u>	<u>Description</u>	<u>Part #</u>
1	Eazy Slider Base	EZ-4001
2	Eazy Slider Leg w/ Mounting Hardware(Set of 4)	EZ-4002
3	Eazy Slider Bed Plate	EZ-4003
4	Eazy Slider Mold Plate Stanchions(Set of 4)(Size Required)	EZ-4004
5	Eazy Slider Wing Knob (Set of 4)	EZ-4005
6	Eazy Slider Top Plate w/ Fill Tube	EZ-4006
7	Eazy Slider Pivot Bar Base	EZ-4007
8	Eazy Slider Pivot Bar	EZ-4008
9	Eazy Slider Stop Collar	EZ-4009
10	Eazy Slider Pivot or Stop Ring Pin w/ Washer(5 Required)	EZ-4010
11	Eazy Slider Piston	EZ-4011
12	Eazy Slider w/ Fastener	EZ-4012
13	Eazy Slider Connecting Arm	EZ-4013
14	Eazy Slider Lever c/w Handle	EZ-4015
15	Eazy Slider Mold Plate Assembly (Specify Size)	Call Factory

Parts Breakdown

1



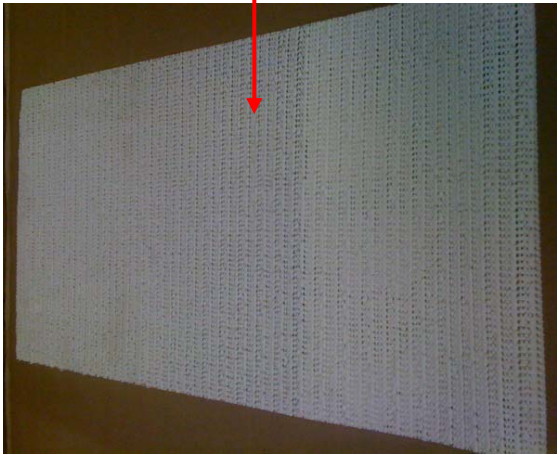
2



3



4



<u>Item#</u>	<u>Description</u>	<u>Part #</u>
1	Eazy Slider Clamp (Set of 2)	EZ-4018
2	Eazy Slider Clamp Pads(Set of 4)	EZ-4019
3	Eazy Slider Name Label	EZ-4021
4	Eazy Slider Non-Slip Pad	EZ-4022

Regulator Plate

Use this Regulator Plate to help regulate the weight of your patties. The Regulator Plate is installed in between the Fill Tube and Mold Plate Stanchions. For a large diameter mold, install the Regulator Plate with the *Patty-O-Matic* stamp facing the operator. For smaller diameter molds, install the Regulator Plate with the *Patty-O-Matic* stamp away from the operator.

