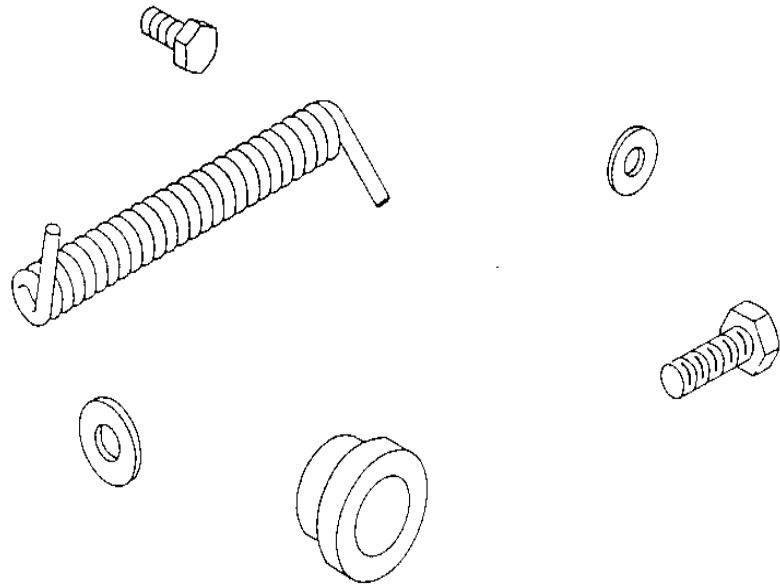


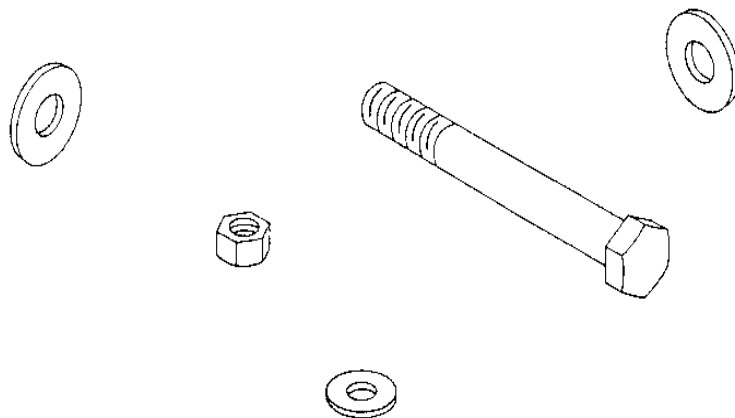


## Parts List

# **VACCUM MACHINE 380T**

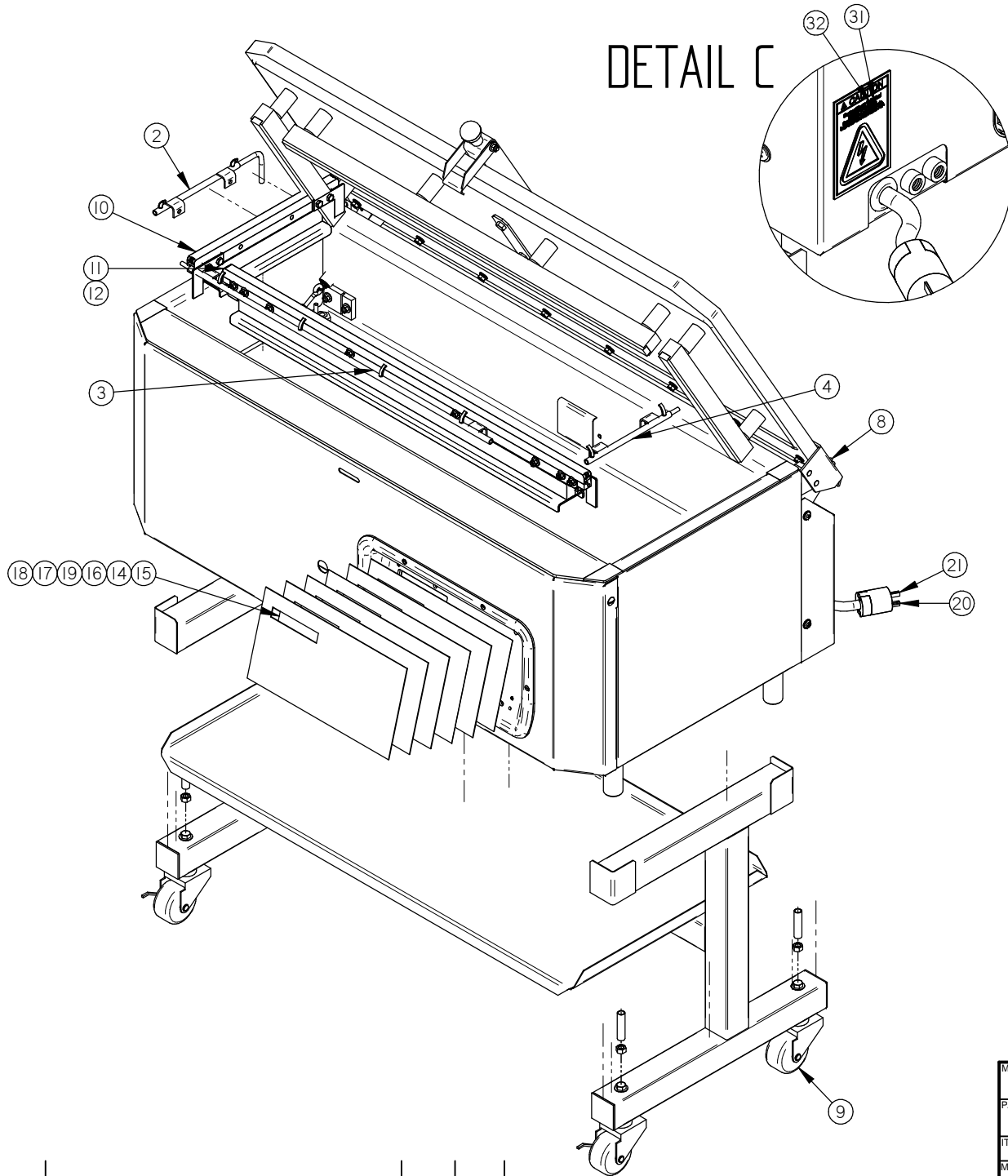


# MECHANICAL DRAWING



**005B0942**

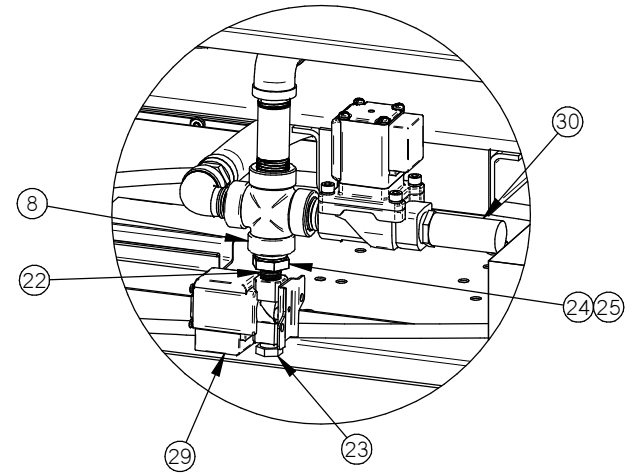
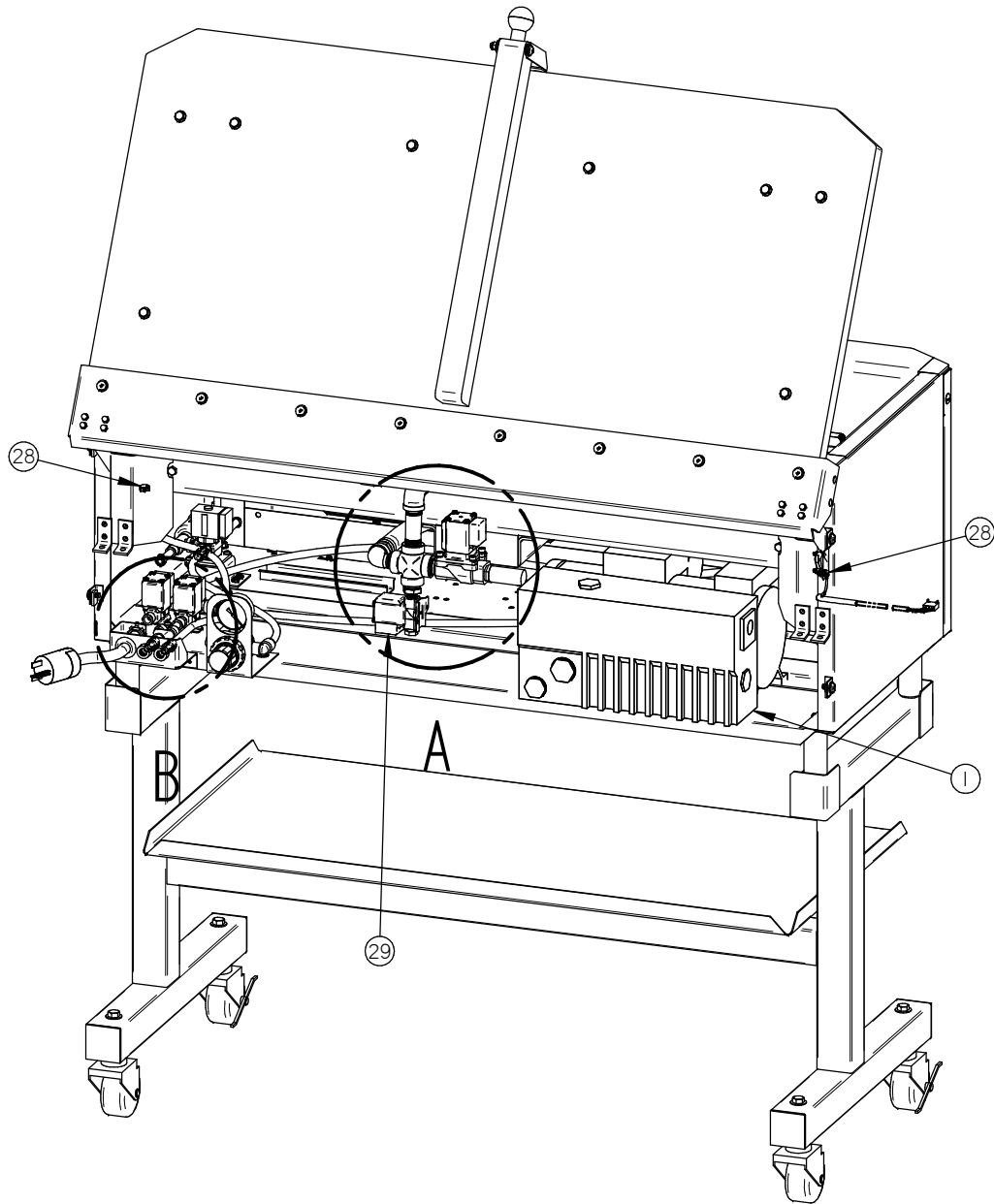
**DETAIL C**



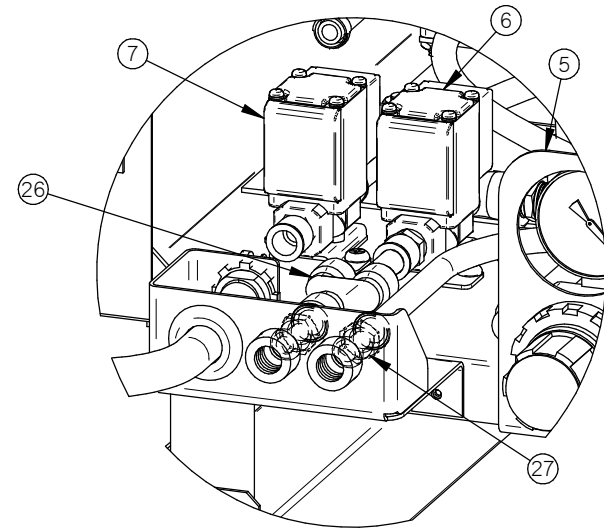
ITEM	PART #	DESCRIPTION	QT.
1	004-0346	"BUSCH" PUMP INSTALATION	1
2	005A0960	LEFT GAS INJECTION BAR ASS'Y	1
3	005A0961	FRONT GAS INJECTION BAR ASSEMBLY	1
4	005A0962	RIGHT GAS INJECTION BAR ASS'Y	1
5	005A1496	AIR REGULATOR VALVE ASSY	1
6	005A1497	GAS VALVE ASSY	1
7	005A1529	GAS VALVE ASSY	1
8	005B0941	BASE MACHINE ASSEMBLY	1
9	005B0972	STAND ASSEMBLY	1
10	005C0803	SEAL BAR ASSEMBLY	2
11	005C0882	LONG SEAL BAR ASSEMBLY	1
12	005C0882	LONG SEAL BAR ASSEMBLY	1
13	005C0967	SEAL BAR ASSEMBLY B.C.O.	2
14	033-0013	MC-40 KEYBOARD "CPI/GUARDIAN"	1
15	033-0014	MC-40 KEYBOARD "FOODPAK"	1
16	033-0015	MC-40 KEYBOARD "SIPROMAC"	1
17	033-0016	MC-40 KEYBOARD "HOLLYMATIC"	1
18	033-0018	MC-40 KEYBOARD "BERKEL"	1
19	033-0019	MC-40 KEYBOARD "BSA"	1
20	036-1510	MALE PLUG 20 AMP. / 125 V.	1
21	036-1512	MALE PLUG 15 AMP./ 250 V.	1
22	100-0225	CLOSE NIPPLE 1/4" NPT SS	1
23	100-0500	RED. BUSH. 1/4" NPT x 1/8" NPT SS	1
24	100-0510	RED.BUSH.1/2"NPT x 1/4"NPT S/S	1
25	100-0832	HEX. PLUG 1/2" NPT S/S	1
26	102-0362	Y BRANCH 3/8" MNPT X 3/8" T. QUICK	1
27	102-0410	MALE CONN.1/4"MNPTx3/8"T.QUICK	3
28	105-0218	EAR CLAMP 3/8" S/S	2
29	106-0010	VALVE 2WAY N.C. 24VAC 1/4" NPT(SMC)	1
30	114-2050	EXHAUST MUFFLER 1/2 NPT S/S	1
31	127-0115	STICKER ELEC. CONN. 15A 2-1/2" X 3-3/4"	1
32	127-0120	STICKER ELEC. CONN. 20A 2-1/2" X 3-3/4"	1

LET.	MODIFICATION	DATE	INT.
------	--------------	------	------

MACHINE	<b>380T</b>		DEPT. TOL. METRIC	INCH	SIPROMAC ST-GERMAIN DE GRANTHAM QUEBEC CANADA
PART	<b>MACHINE ASSEMBLY</b>		USINAGE ± 0.1 ± 0.004	TOLERIE ± 0.5 ± 0.020	
ITEM	CNC	DATE	SOUDEGE ± 0.5 ± 0.020	N.T.S.	
MAT.	3D DWG BY <b>SBU</b>	DATE <b>14-06-12</b>	NO.	DEPT. <b>M-I</b>	QTY. <b>1</b>
	2D DWG BY <b>AG</b>	DATE <b>24-09-14</b>	<b>005B0942</b>		



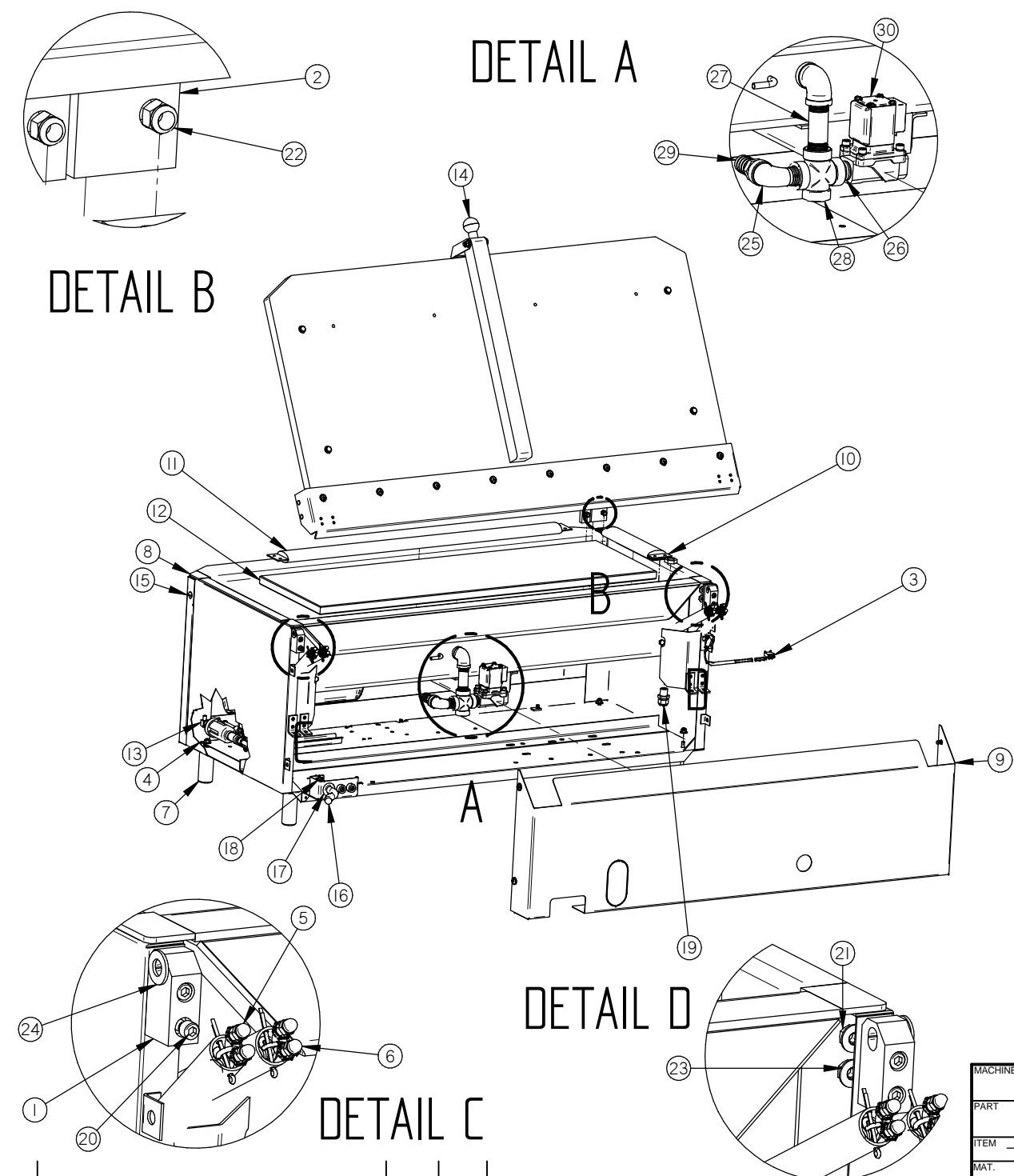
DETAIL A



DETAIL B

MACHINE		<b>380T</b>		DEPT. TOL. METRIC	INCH	SIPROMAC	
PART		<b>MACHINE ASSEMBLY</b>		USINAGE	± 0.1	± 0.004"	ST-GERMAIN DE GRANTHAM QUEBEC CANADA
ITEM		CNC		TOLERIE	± 0.5	± 0.020"	
MAT.		3D DWG BY <b>SBU</b>		SOUDEGE	± 0.5	± 0.020"	
		DATE <b>14-06-12</b>		N.T.S.		DEPT.	<b>M-I</b>
		DATE				QTY.	<b>1</b>
						<b>005B0942</b>	

# 005B0941

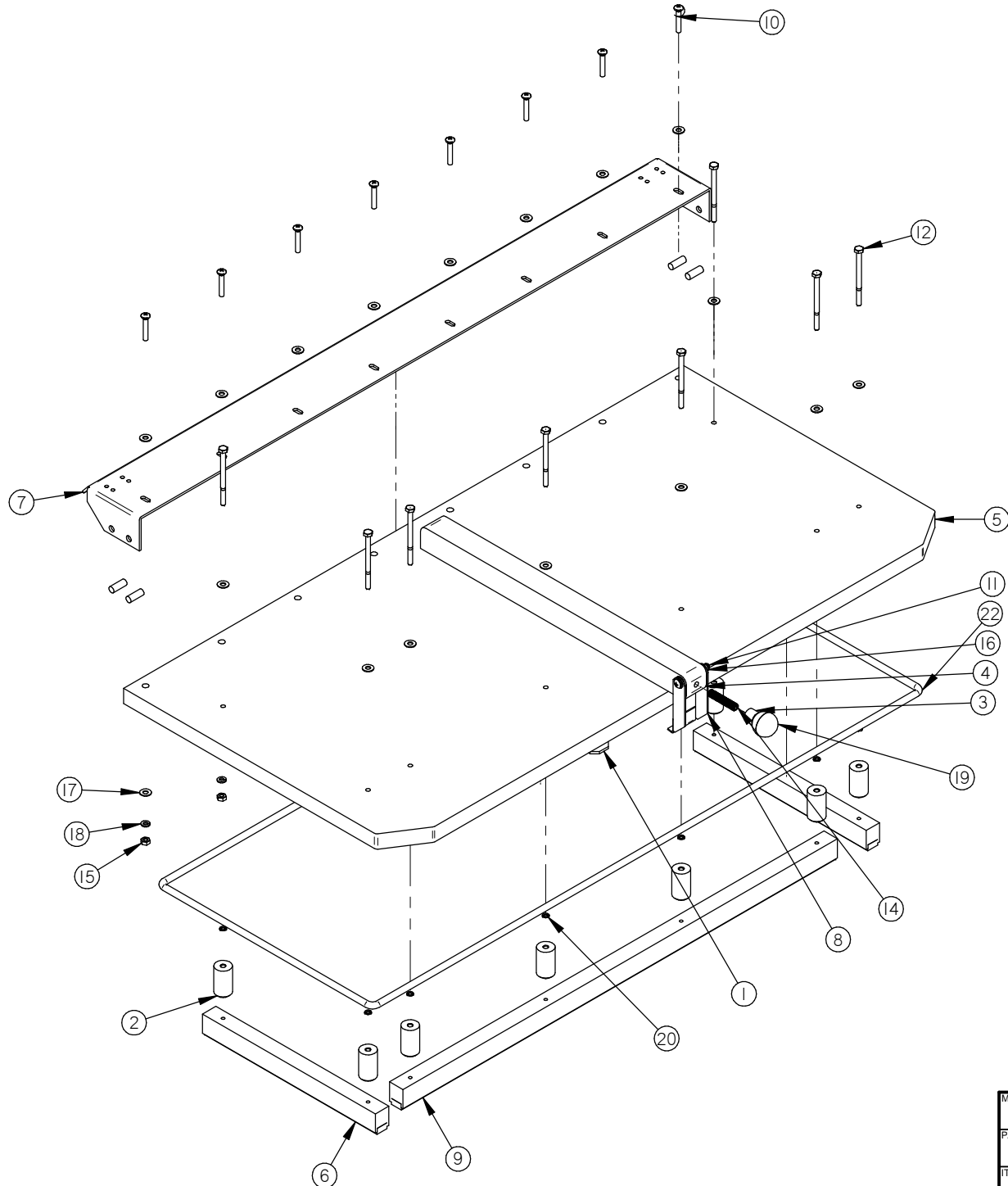


ITEM	PART #	DESCRIPTION	QT.
1	002-0024	HINGE BLOCK	2
2	002-0435	SEAL BAR GUIDE BLOCK	6
3	004-0261	LIMIT SWITCH ASS'Y	1
4	004A0042	ELEC. SUPPORT PRE-ASS'Y	1
5	004A1224	SPRING PRE-ASSEMBLY	2
6	004A1225	SPRING PRE-ASSEMBLY	2
7	004A4112	NSF FOOT	3
8	004B0595	VACUUM 380T PRE-ASSEMBLY	1
9	004C1223	REAR PANEL PRE-ASS'Y	1
10	005-0518	BELLOWS ASS'Y	2
11	005A0889	BELLOWS ASSEMBLY	1
12	005A0925	FILLER PLATE ASSEMBLY	2
13	005A1495	BELLOWS VALVE ASSY	1
14	005B0943	COVER ASSEMBLY	1
15	005C0944	FRONT PANEL ASSEMBLY	1
16	030-0120	CAB TIRE #12/3 SJOW	1
17	036-0200	GROMMET 5/8"IDx1 1/8"OD RUBBER	1
18	036-0390	CABLE CONNECT. 3/8"-1/2"METAL	1
19	036-0400	WIRE CONNECT. 3/8" NPT CD09/O-RING/NUT	6
20	051-0232	SCREW 1/4-20x 1-1/4"SKT CAP SS	4
21	051-0580	NUT 1/4"-20 S/S	4
22	051-0581	NUT 1/4"-20 NYLON LOCK S/S	8
23	051-0740	WASHER 1/4" FLAT S/S	12
24	058-0030	NYLON SPACER 3/8IDx3/4ODx1/16	2
25	100-0075	STREET ELBOW 1/2" NPT SS	1
26	100-0230	CLOSE NIPPLE 1/2" npt, S/S	1
27	100-0330	NIPPLE 1/2" NPT X 3" SS	1
28	100-0493	CROSS 1/2" NPT SS	1
29	100-1205	STRAIGHT 1/2"MNPTx3/4" HOSE BARB S/S	1
30	106-00201	VALVE 2WAY 24V 1/2" NPT	1

LET.	MODIFICATION	DATE	INT.
------	--------------	------	------

MACHINE		<b>380T</b>		DEPT. TOL.	METRIC	INCH	SIPROMAC ST-GERMAIN DE GRANTHAM QUEBEC CANADA
PART		<b>BASE MACHINE ASSEMBLY</b>		USINAGE	± 0.1	± 0.004"	
				TOLERIE	± 0.5	± 0.020"	
				SOUDEAGE	± 0.5	± 0.020"	N.T.S.
ITEM	CNC	DEPT.	M	QTY.	1		
MAT.	3D DWG BY	DATE	14-06-02	NO.	<b>005B0941</b>		
	2D DWG BY	DATE	24-09-14				

# 005B0943



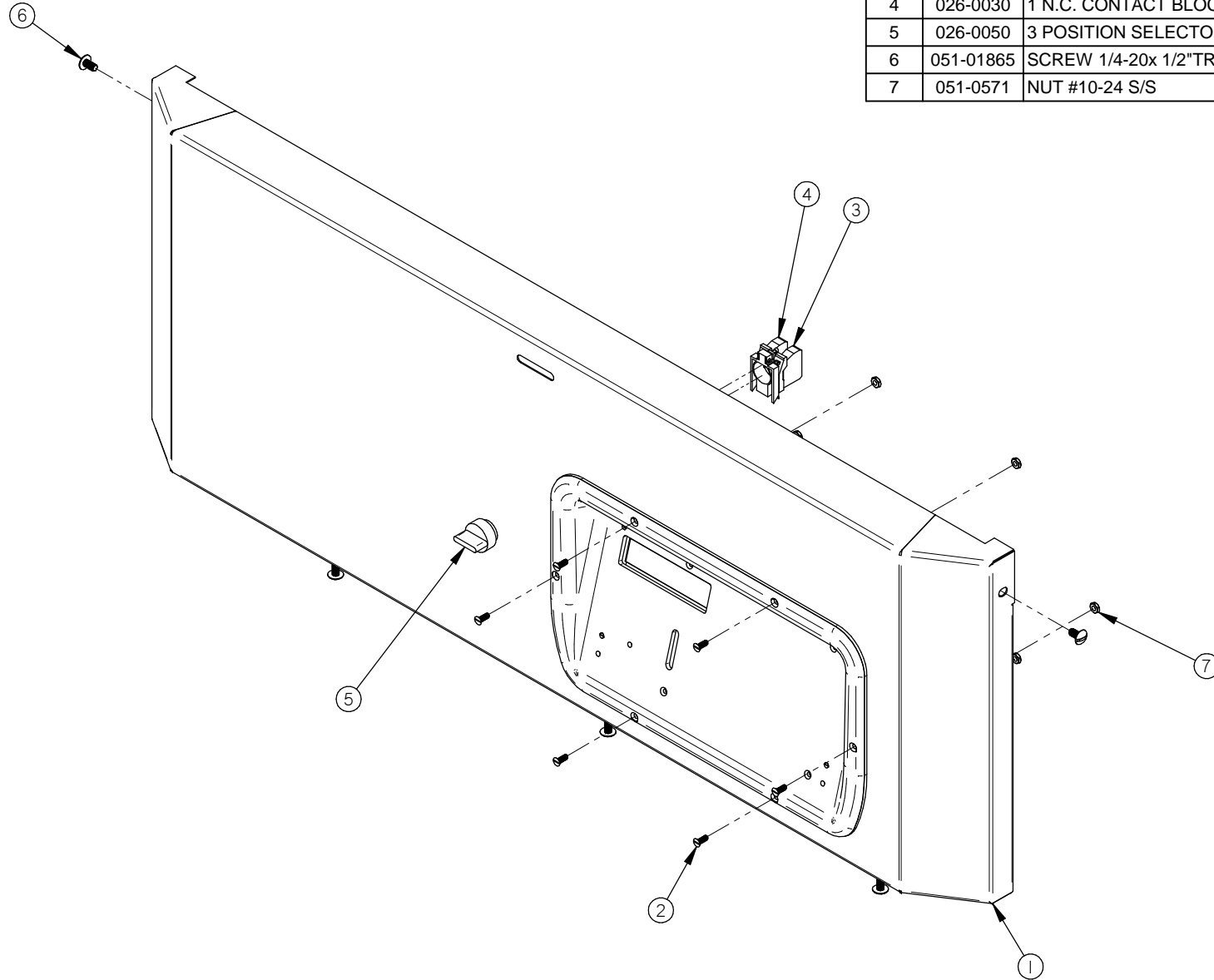
ITEM	PART #	DESCRIPTION	QT.
1	001A3074	COVER REINFORCEMENT	1
2	002-0026	UPPER SEAL BAR SPACER	8
3	002A1295	BALL SPACER	1
4	002B1347	COVER REINFORCEMENT	1
5	002B1786	PLEXI COVER	1
6	004A0308	UPPER SEAL BAR PRE-ASS'Y	2
7	004A1215	COVER HINGE ASSEMBLY	1
8	004A1244	COVER HOLD DOWN ASS'Y	1
9	004A1559	LONG UPPER SEAL BAR PRE-ASS'Y	1
10	051-0249	SCREW 1/4-20x 1-1/2" PAN PHIL SS	8
11	051-0272	SCREW 1/4"-20 x 2 1/4" PAN PHIL S/S	1
12	051-0288	BOLT 1/4-20 x 3 1/2" S/S	8
13	051-0390	BOLT HEX. 3/8"-16nc. X 2" S/S	3
14	051-0393	SCREW 3/8"-16 x 2" SET HEX SKT SS	1
15	051-0580	NUT 1/4"-20 S/S	8
16	051-0581	NUT 1/4"-20 NYLON LOCK S/S	1
17	051-0740	WASHER 1/4" FLAT S/S	28
18	051-0750	WASHER 1/4" LOCK S/S	8
19	057-0001	BALL 1-3/8" x 3/8"-16 PLASTIC	1
20	076-0010	"O" RING 1/4" x 3/8" x 1/16"	8
21	076-0040	O RING 3/8" x 1/2" x 1/16"	3
22	179-0005	NEOPRENE SPONGE 3/8" O.D. (9'-6" )	1

LET.	MODIFICATION	DATE	INT.
------	--------------	------	------

MACHINE	<b>380T</b>			DEPT. TOL	METRIC	INCH	SIPROMAC ST-GERMAIN DE GRANTHAM QUEBEC CANADA
PART	<b>COVER ASSEMBLY</b>			USINAGE	± 0.1	± 0.004"	
ITEM	CNC			TOLERIE	± 0.5	± 0.020"	
MAT.	3D DWG BY <b>SBU</b> DATE <b>14-08-06</b>			SOUDEGE	± 0.5	± 0.020"	NO. <b>005B0943</b>
	2D DWG BY <b>AG</b> DATE <b>23-09-14</b>			N.T.S.		DEPT. <b>M-I</b> QTY. <b>1</b>	

# 005C0944

ITEM	PART #	DESCRIPTION	QT.
1	001C2670	FRONT PANEL	1
2	005B0583	MC-40 CONTROL BOARD	1
3	026-0025	1 N.C. CONTACT WITH BASE	1
4	026-0030	1 N.C. CONTACT BLOCK	1
5	026-0050	3 POSITION SELECTOR	1
6	051-01865	SCREW 1/4-20x 1/2" TRUSS SLOT SS	5
7	051-0571	NUT #10-24 S/S	6

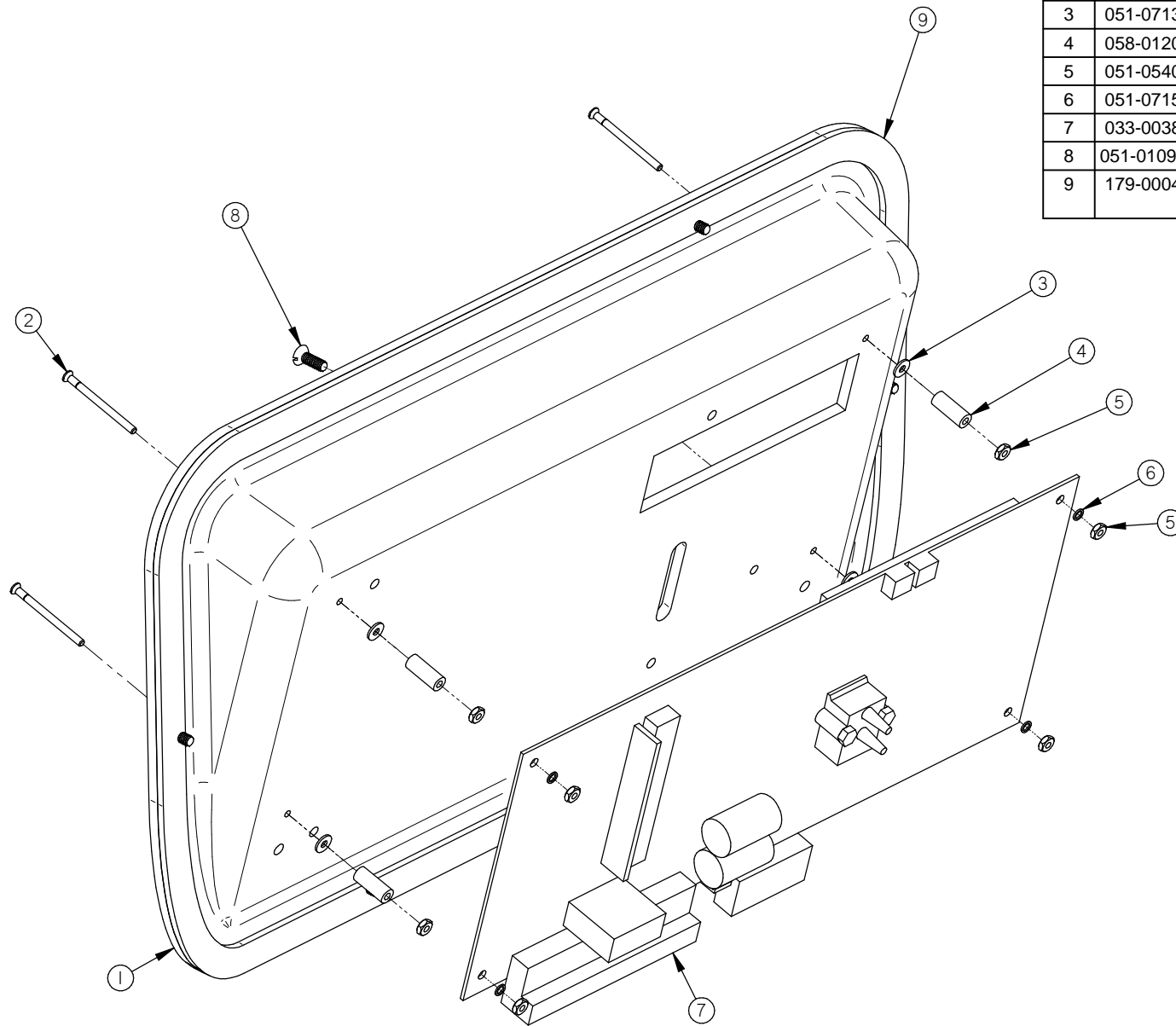


MACHINE		<b>380T</b>		DEPT. TOL.	METRIC	INCH	SIPROMAC ST-GERMAIN DE GRANTHAM QUEBEC CANADA
PART		FRONT PANEL ASSEMBLY		USINAGE	± 0.1	± 0.004"	
				TOLERIE	± 0.5	± 0.020"	
				SOUDEAGE	± 0.5	± 0.020"	N.T.S.
ITEM	CNC	DEPT.	M	QTY.	1		
MAT.	3D DWG BY	DATE	14-06-12	NO.	005C0944		
	2D DWG BY	DATE	23-09-14				

LET.	MODIFICATION	DATE	INT.
------	--------------	------	------

# 005B0583

ITEM	PART #	DESCRIPTION	QT.
1	003A0403	CONTROL INSERT	1
2	051-0092	SCREW #4-40 x 1 1/4" FLAT SLT S/S	4
3	051-0713	WASHER #4 FLAT S/S	4
4	058-0120	CPVC SPACER 0.120" x 1/4" x 5/8"	4
5	051-0540	NUT #4-40 HEX S/S	8
6	051-0715	WASHER #4 LOCK SS	4
7	033-0038	MC-40 SENSOR VACUUM	1
8	051-01095	SCREW 8-32 x 1/2 FLAT SLOT SS	6
9	179-0004	NITRILE 1/2" X 1/8" AUTOCOLLANT X 1220mm long	1



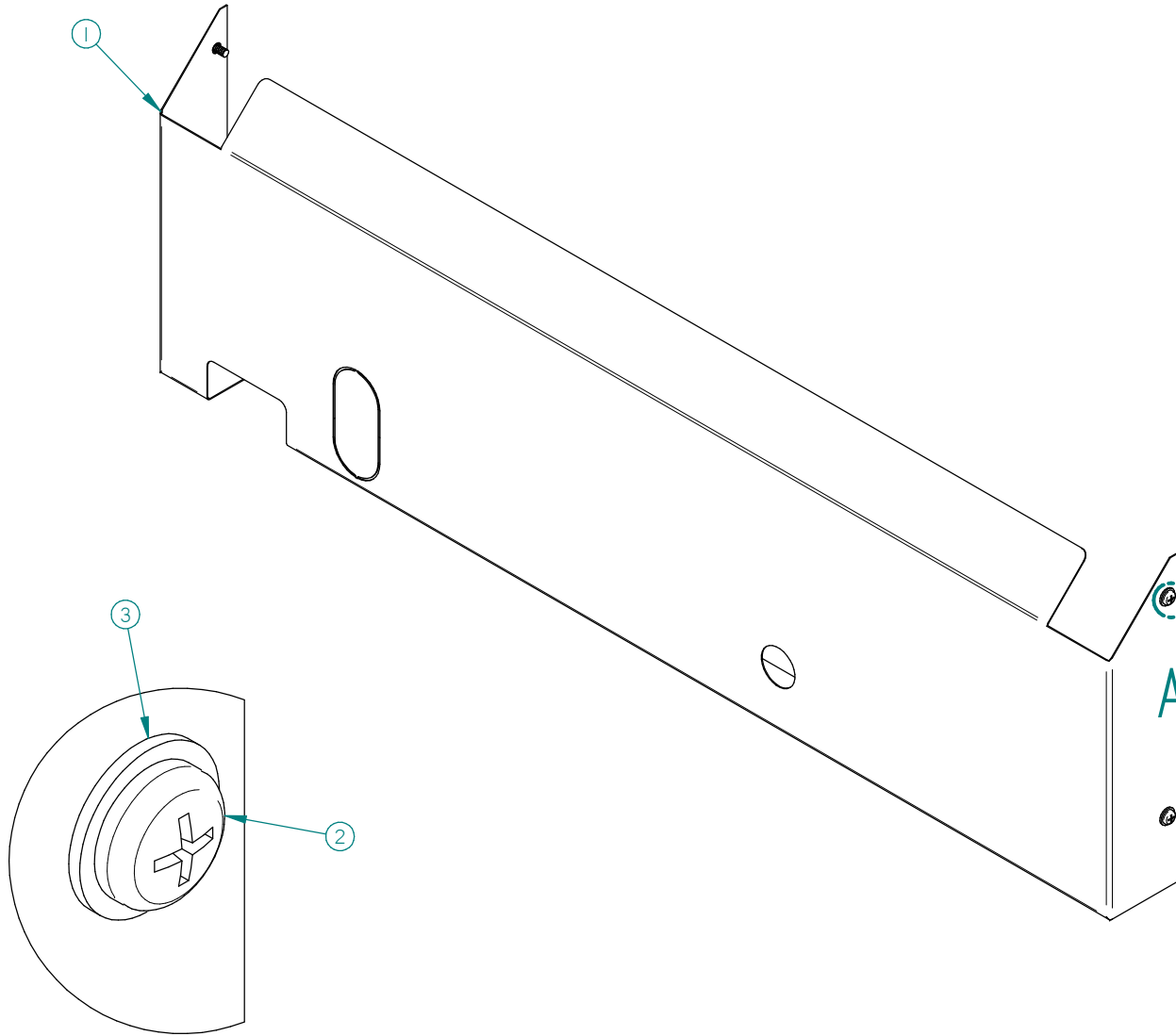
MACHINE		<b>VACUUM</b>		DEPT. TOL.	METRIC	INCH	SIPROMAC ST-GERMAIN DE GRANTHAM QUEBEC CANADA
PART		<b>MC-40 CONTROL BOARD</b>		USINAGE	± 0.1	± 0.004"	
				TOLERIE	± 0.5	± 0.020"	
				SOUDEAGE	± 0.5	± 0.020"	N.T.S.
ITEM		CNC		DEPT.	M		QTY. 1
MAT.		DWG BY	SBU	DATE	13-11-21		NO. <b>005B0583</b>
		APP. BY		DATE			

LET.	MODIFICATION	DATE	INT.
------	--------------	------	------



# 004C1223

ITEM	PART #	DESCRIPTION	QT.
1	001C3063	REAR PANEL	1
2	051-0185	SCREW 1/4-20x 1/2" PAN PHIL S/S	4
3	051-0740	WASHER 1/4" FLAT S/S	4



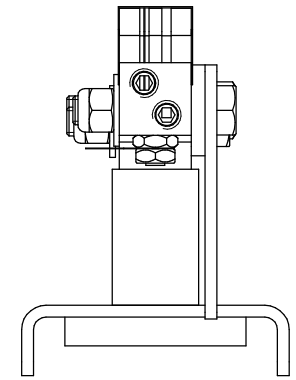
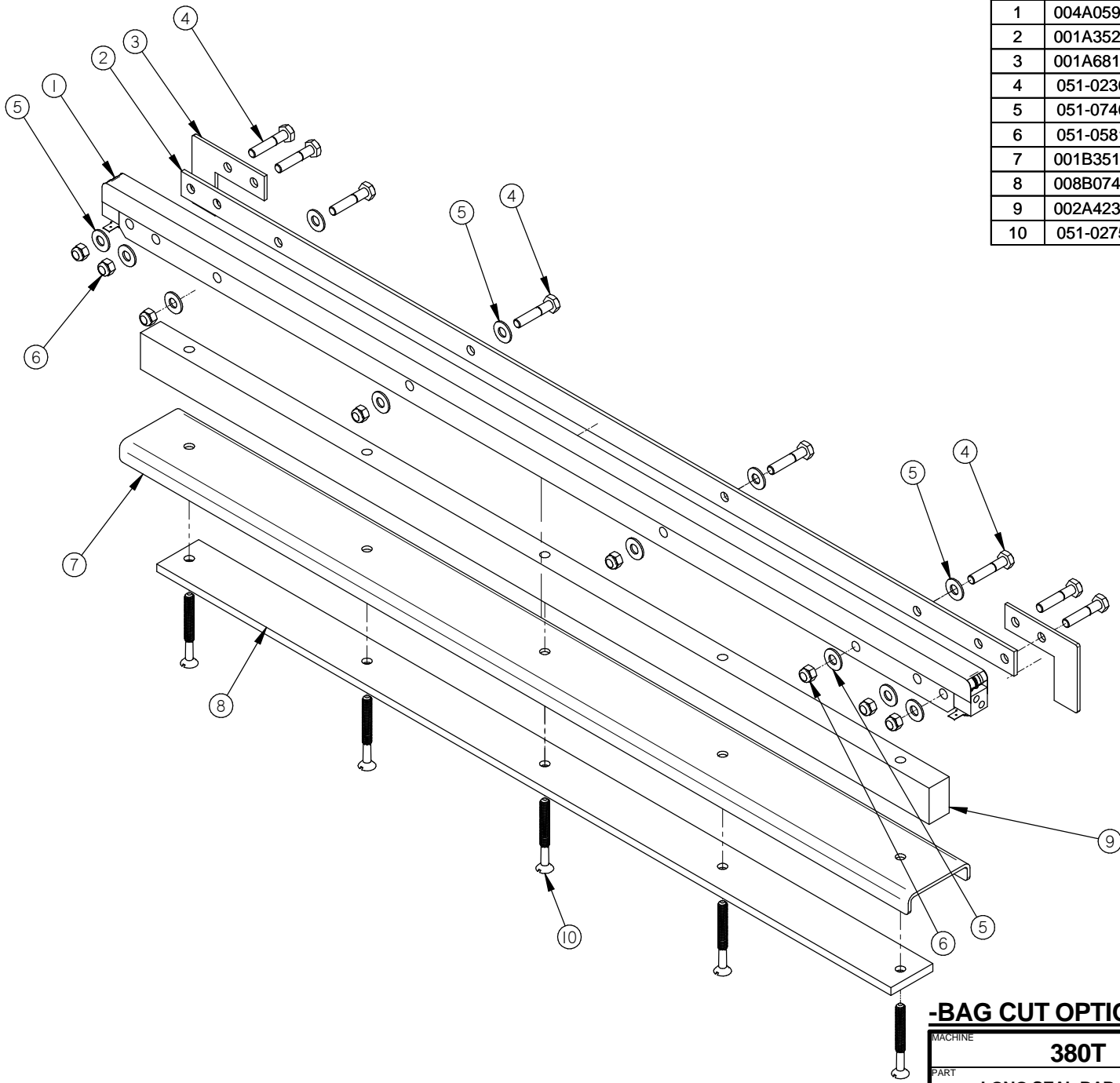
DETAIL A

LET.	MODIFICATION	DATE	INT.
------	--------------	------	------

MACHINE	<b>380, 380T</b>		DEPT. TOL.	METRIC	INCH	SIPROMAC ST-GERMAIN DE GRANTHAM QUEBEC CANADA
PART	<b>REAR PANEL PRE-ASS'Y</b>		USINAGE	± 0.1	± 0.004"	
			TOLERIE	± 0.5	± 0.020"	
			SOUDEAGE	± 0.5	± 0.020"	
ITEM	CNC	DEPT.	N.T.S.		QTY.	1
MAT.	DWG BY	DATE	APP. BY	DATE	NO.	<b>004C1223</b>
	<b>SBU (AG)</b>	<b>14-06-03</b>				

# 005C0968

ITEM	PART #	DESCRIPTION	QT.
1	004A0599	LONG SEAL BAR PRE- ASS'Y	1
2	001A3521	LONG SEAL BAR REINFORCEMENT	1
3	001A6812	SEAL BAR GUIDE	2
4	051-0230	HEX BOLT 1/4-20 x 1 1/4" SS	8
5	051-0740	WASHER 1/4" FLAT S/S	12
6	051-0581	NUT 1/4"-20 NYLON LOCK S/S	8
7	001B3519	LONG SEAL BAR SUPPORT	1
8	008B0749	LONG BELLOW SPACER	1
9	002A4235	SEAL BAR SUPPORT (LONG)	1
10	051-0275	SCREW 1/4-20 X 2-1/4" FLAT SLOT S/S	5



**-END VIEW-**

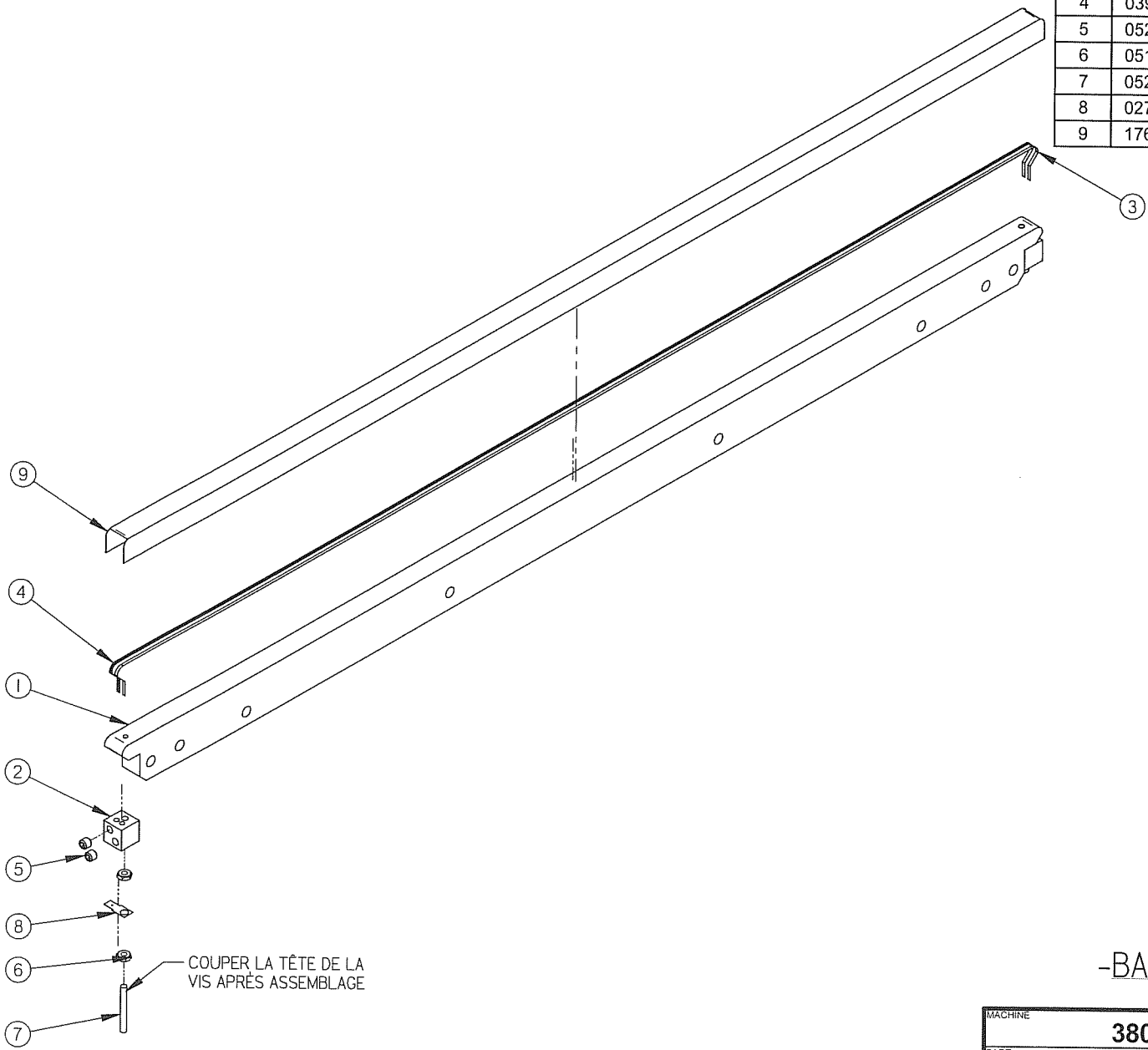
**-BAG CUT OPTION-**

MACHINE	<b>380T</b>		DEPT. TOL. METRIC	INCH	SIPROMAC ST-GERMAIN DE GRANTHAM QUEBEC CANADA
PART	<b>LONG SEAL BAR ASSEMBLY</b>		USINAGE ± 0.1 ± 0.004"	N.T.S.	
ITEM	CNC	DATE	TOLERIE ± 0.5 ± 0.020"		
MAT.	APP. BY	DATE	NO.	DEPT.	QTY.
	SBU	14-08-06		M	1
					<b>005C0968</b>

LET.	MODIFICATION	DATE	INT.
------	--------------	------	------

# 004A0599

ITEM	PART #	DESCRIPTION	QT.
1	002A1787	LONG SEAL BAR	1
2	002A1275	CONNECTOR	2
3	039-0230	REFLEX BANC 2.5mm (958mm) (0.10)	1
4	039-0270	"T" PROFILE CUT. ELEM. (958mm) (0.10)	1
5	052-0395	SET SCREW 1/4"-20 x 5/16" ( OVAL POINT )	4
6	051-0550	NUT #8-32 SS	4
7	052-0250	SCREW #8-32 x 1 1/2" RND SLOT BRASS	2
8	027-0400	CONNECTOR ADAPTOR	2
9	176-0202	TEFLON TAPE .005"x1-1/2" ADHESIVE (.1056)	1



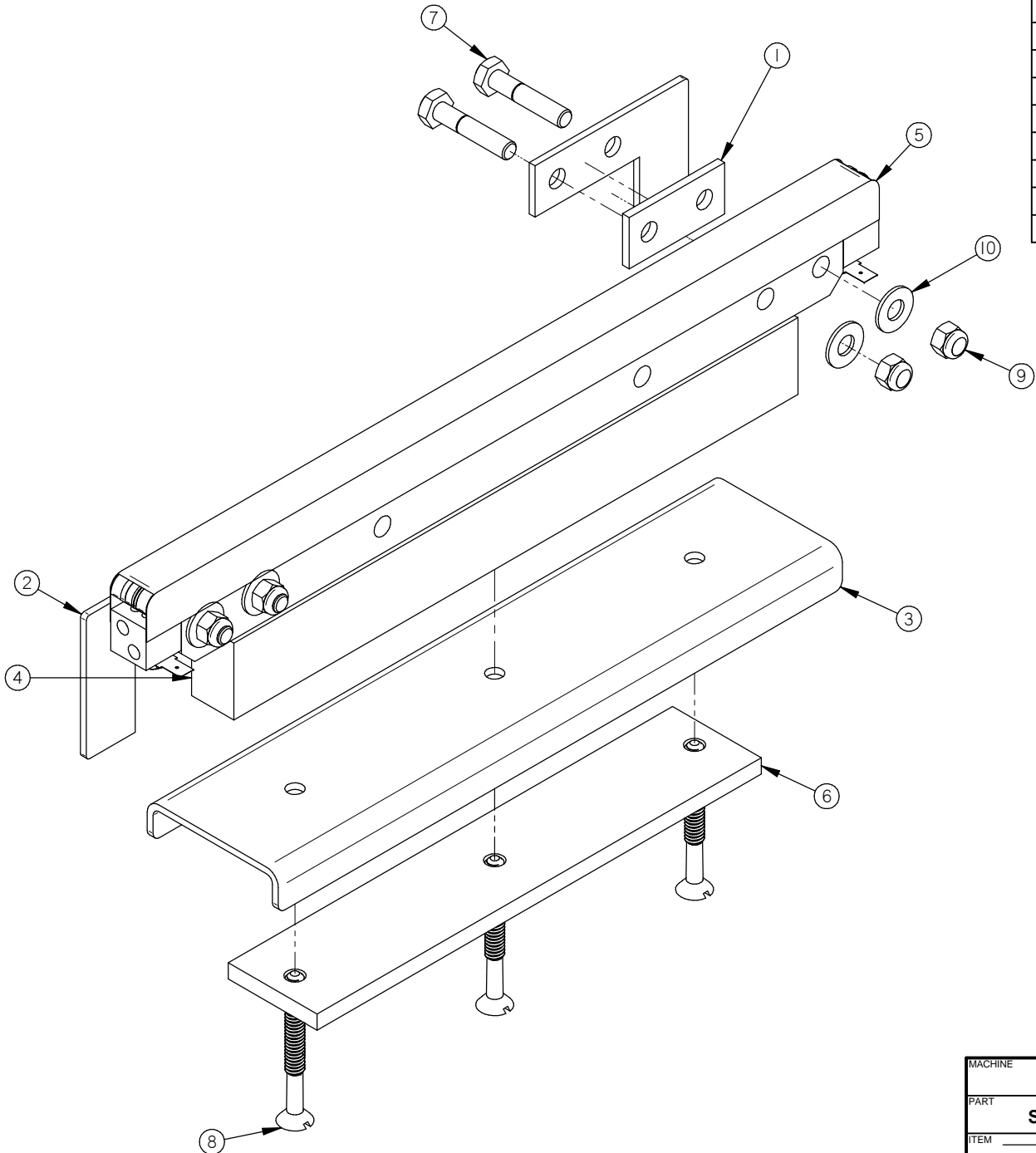
COUPER LA TÊTE DE LA VIS APRÈS ASSEMBLAGE

-BAG CUT OPTION-

LET.	MODIFICATION	DATE	INT.
------	--------------	------	------

MACHINE	<b>380T</b>			DEPT. TOL. METRIC	INCH	SIPROMAC ST-GERMAIN DE GRANTHAM QUEBEC CANADA
PART	LONG SEAL BAR PRE- ASSY			USINAGE ± 0.1	± 0.004"	
ITEM				TOLERIE ± 0.5	± 0.020"	
MAT.				SOUDEAGE ± 0.5	± 0.020"	N.T.S.
				CNC	DEPT.	M-I
				DWG BY <b>M.A.L.</b>	DATE <b>05-06-22</b>	NO. <b>004A0599</b>
				APP. BY <b>D</b>	DATE <b>05-06-22</b>	QTY. <b>1</b>

# 005C0967



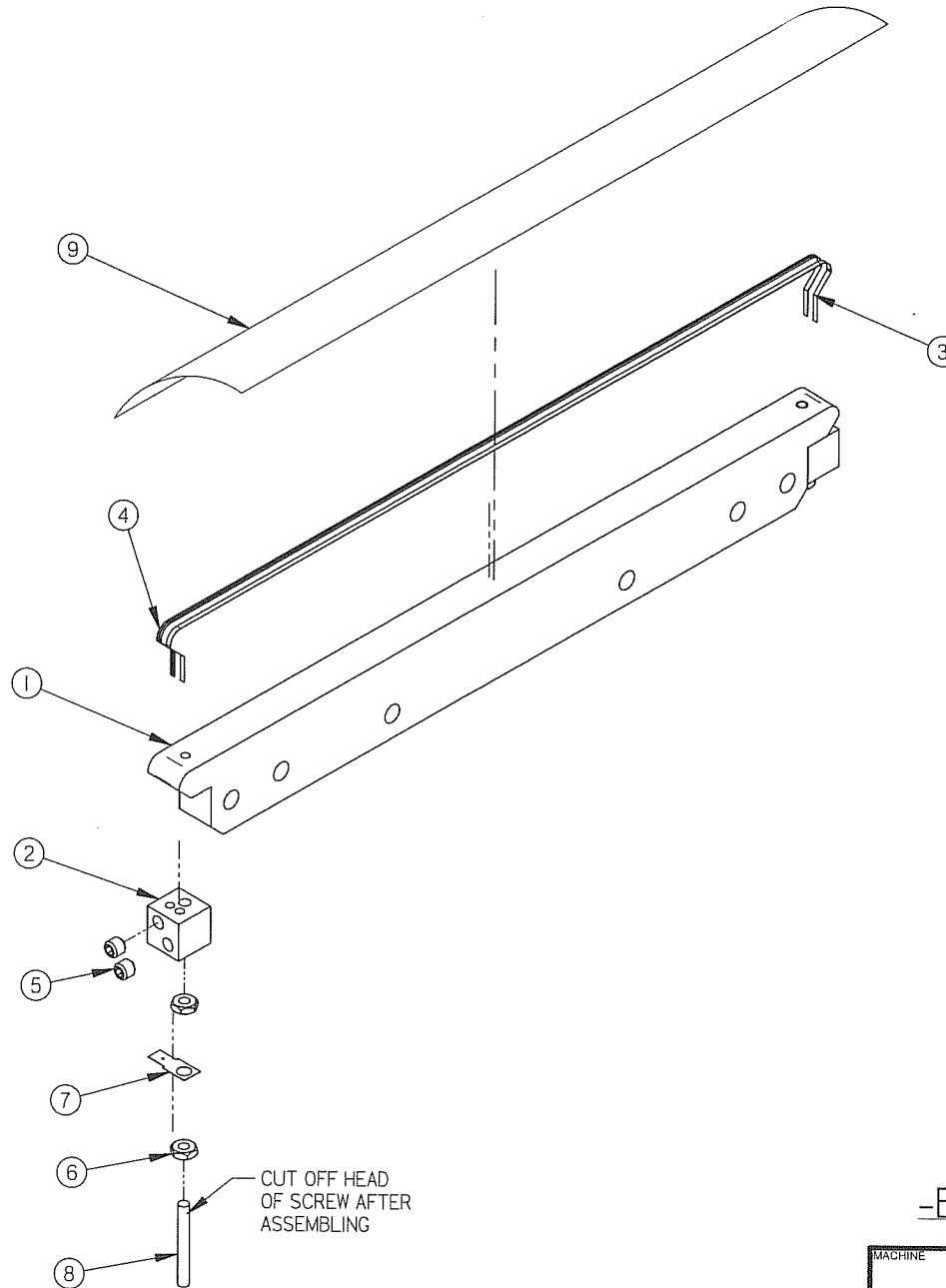
ITEM	PART #	DESCRIPTION	QT.
1	001-1829	SEAL BAR GUIDE SPACER	2
2	001A6812	SEAL BAR GUIDE	2
3	001B1737	SEAL BAR SUPPORT	1
4	002A4231	SEAL BAR SUPPORT (SHORT)	1
5	004A1333	SEAL BAR PRE- ASSY	1
6	008B0677	ESPACEUR DE SOUFFLET	1
7	051-0230	HEX BOLT 1/4-20 x 1 1/4" SS	4
8	051-0275	SCREW 1/4-20 X 2-1/4" FLAT SLOT S/S	3
9	051-0581	NUT 1/4"-20 NYLON LOCK S/S	4
10	051-0740	WASHER 1/4" FLAT S/S	4

LET.	MODIFICATION	DATE	INT.
------	--------------	------	------

MACHINE		<b>380T</b>		DEPT. TOL.	METRIC	INCH	SIPROMAC ST-GERMAIN DE GRANTHAM QUEBEC CANADA
PART		<b>SEAL BAR ASSEMBLY B.C.O.</b>		USINAGE	± 0.1	± 0.004"	
ITEM		CNC		TOLERIE	± 0.5	± 0.020"	
MAT.		3D DWG BY <b>CF</b>		DATE	<b>12-04-19</b>		N.T.S.
		2D DWG BY <b>AG</b>		DATE	<b>23-09-14</b>		
				DEPT.	<b>M-1(M)</b>		QTY. <b>2</b>
							<b>005C0967</b>

# 004A1333

ITEM	PART #	DESCRIPTION	QT.
1	002A0433	SEAL BAR	1
2	002A1275	CONNECTOR	2
3	039-0230	REFLEX BANC 2.5mm (460mm) (0.48)	1
4	039-0270	"T" PROFILE CUT. ELEM. (460mm) (0.48)	1
5	052-0395	SET SCREW 1/4"-20 x 5/16" ( OVAL POINT )	4
6	051-0550	NUT #8-32 SS	4
7	027-0400	CONNECTOR ADAPTOR	2
8	052-0250	SCREW #8-32 x 1 1/2" RND SLOT BRASS	2
9	176-0202	TEFLON TAPE .005"x1-1/2" ADHESIVE (330mm) (.042)	1



-BAG CUT OPTION-

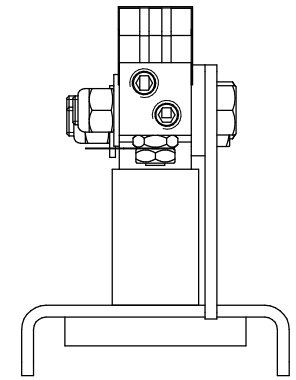
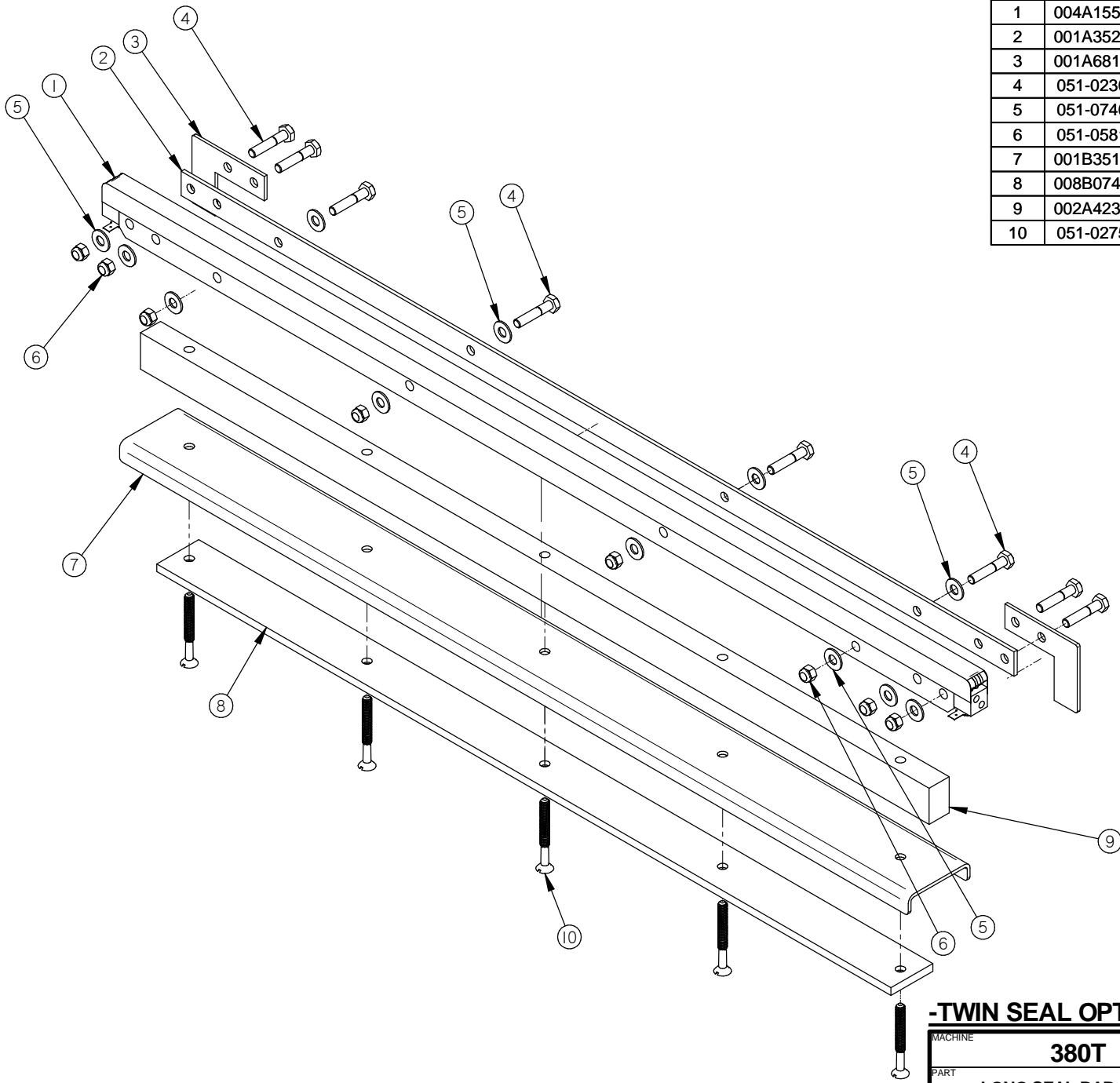
380T	2
380	2
MACHINE	QTY

MACHINE	<b>380 &amp; 380T</b>		DEPT. TOL. METRIC	INCH	<b>SIPROMAC</b> ST-GERMAIN DE GRANTHAM QUEBEC CANADA
PART	<b>SEAL BAR PRE- ASS'Y</b>		USINAGE ± 0.1	± 0.004"	
			TOLERIE ± 0.5	± 0.020"	
			SOUDAGE ± 0.5	± 0.020"	N.T.S.
ITEM	CNC	DEPT.	M	QTY	LISTE
MAT.	DWG BY <b>M.A.L.</b>	DATE <b>05-06-22</b>	NO.	<b>004A1333</b>	
	APP. BY	DATE			

LET.	MODIFICATION	DATE	INT.
------	--------------	------	------

# 005C0882

ITEM	PART #	DESCRIPTION	QT.
1	004A1558	LONG SEAL BAR PRE- ASS'Y	1
2	001A3521	LONG SEAL BAR REINFORCEMENT	1
3	001A6812	SEAL BAR GUIDE	2
4	051-0230	HEX BOLT 1/4-20 x 1 1/4" SS	8
5	051-0740	WASHER 1/4" FLAT S/S	12
6	051-0581	NUT 1/4"-20 NYLON LOCK S/S	8
7	001B3519	LONG SEAL BAR SUPPORT	1
8	008B0749	LONG BELLOW SPACER	1
9	002A4235	SEAL BAR SUPPORT (LONG)	1
10	051-0275	SCREW 1/4-20 X 2-1/4" FLAT SLOT S/S	5



**-END VIEW-**

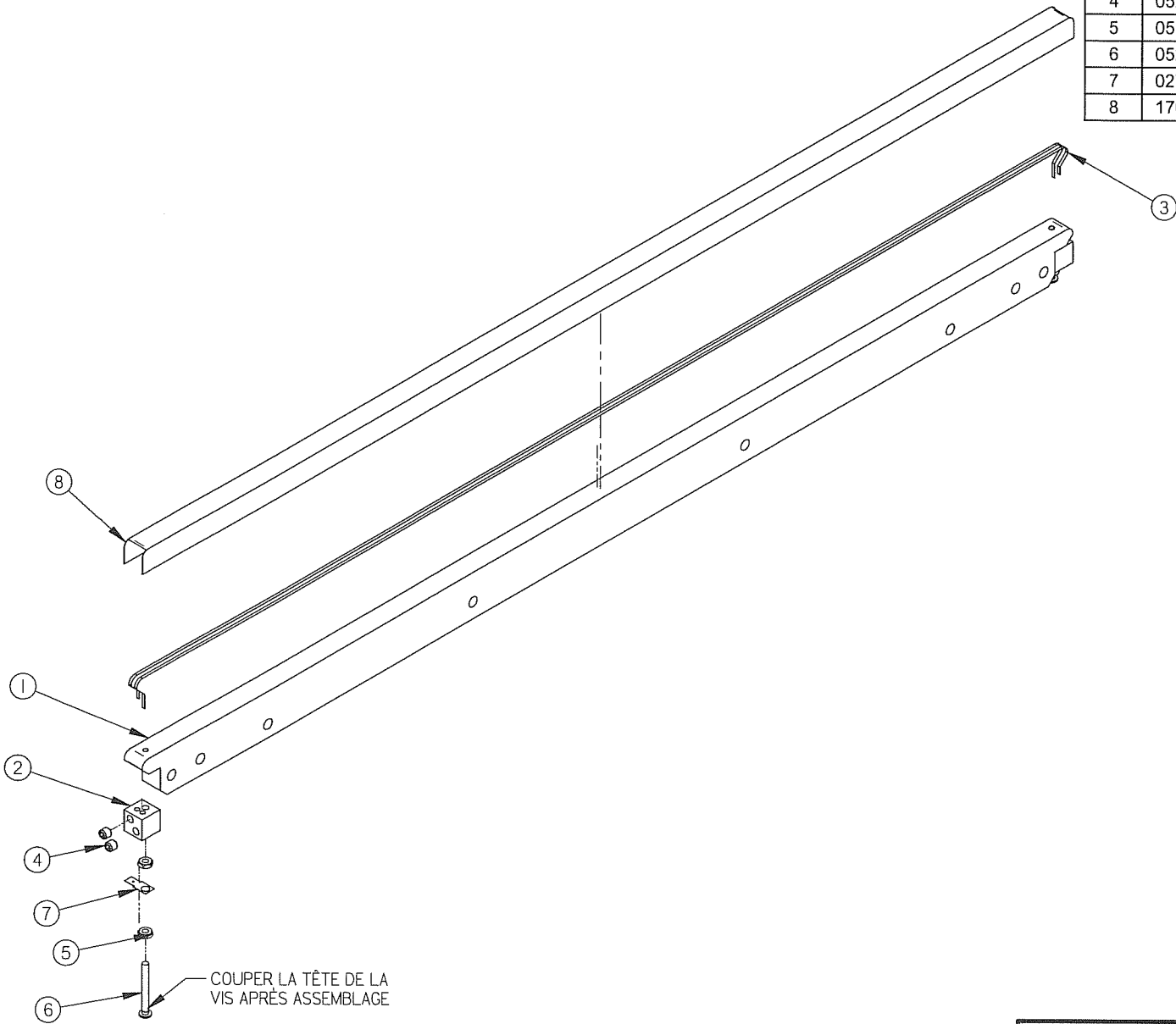
**-TWIN SEAL OPTION-**

LET.	MODIFICATION	DATE	INT.
------	--------------	------	------

MACHINE	<b>380T</b>		DEPT. TOL. METRIC	INCH	SIPROMAC ST-GERMAIN DE GRANTHAM QUEBEC CANADA
PART	<b>LONG SEAL BAR ASSEMBLY</b>		USINAGE ± 0.1	± 0.004"	
			TOLERIE ± 0.5	± 0.020"	
ITEM	CNC		SOUDEAGE ± 0.5	± 0.020"	N.T.S.
MAT.	DWG BY <b>SBU</b>	DATE <b>14-08-06</b>	APP. BY	DATE	DEPT. <b>M</b> QTY. <b>1</b>
					<b>005C0882</b>

# 004A1558

ITEM	PART #	DESCRIPTION	QT.
1	002A1787	LONG SEAL BAR	1
2	002A1275	CONNECTOR	2
3	039-0200	SEALING ELEM. STD TWIN (2 x 3') (3.15)	2
4	052-0395	SET SCREW 1/4"-20 x 5/16" ( OVAL POINT )	4
5	051-0550	NUT #8-32 SS	4
6	052-0250	SCREW #8-32 x 1 1/2" RND SLOT BRASS	2
7	027-0400	CONNECTOR ADAPTOR	2
8	176-0202	TEFLON TAPE .005"x1-1/2" ADHESIVE (.1056)	1

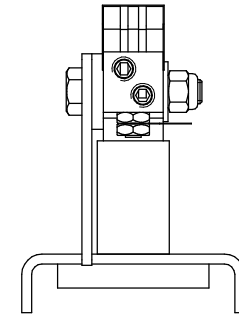
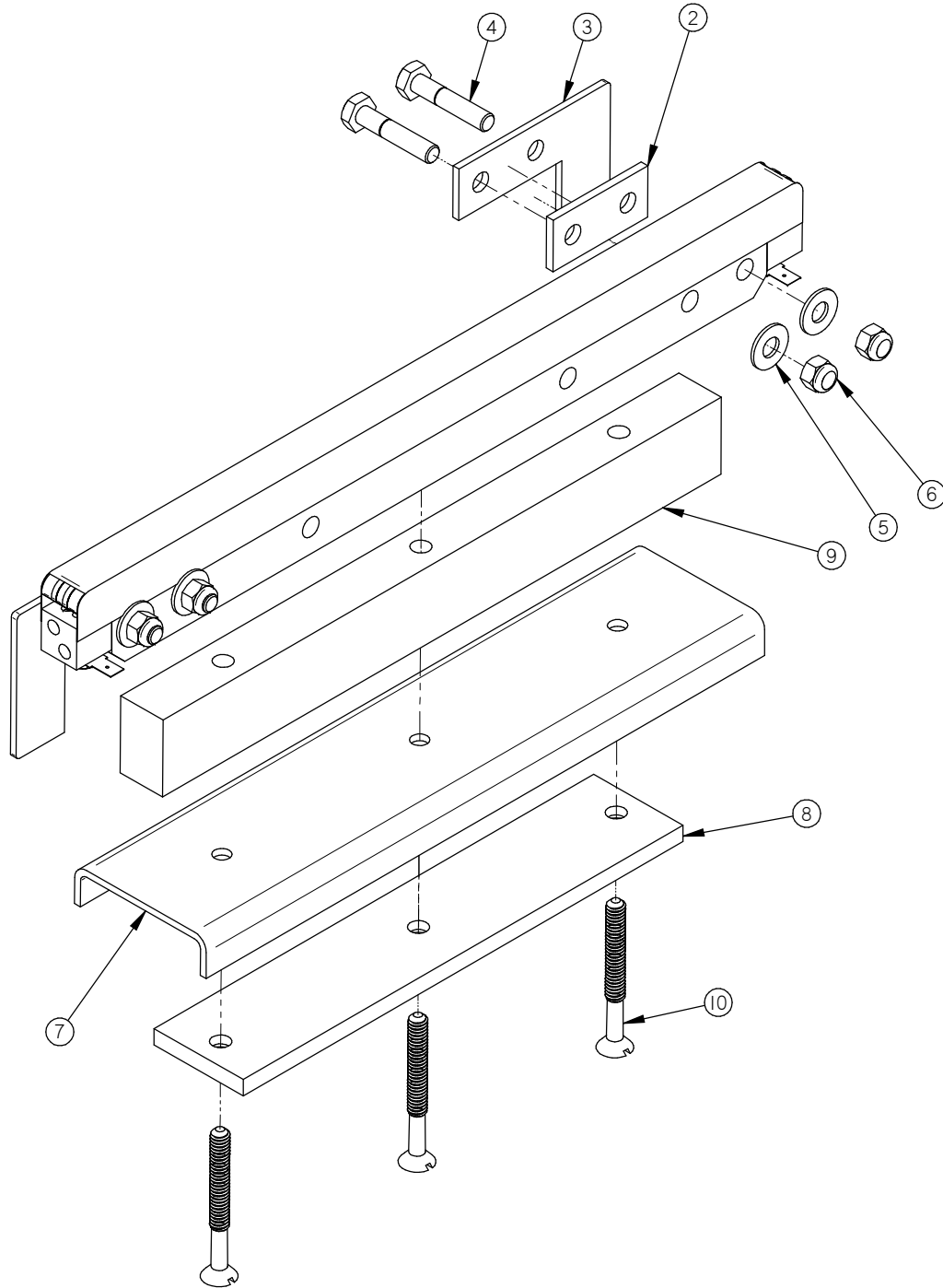


MACHINE	<b>380T</b>			DEPT. TOL. METRIC	INCH	SIPROMAC ST-GERMAIN DE GRANTHAM QUEBEC CANADA
PART	<b>LONG SEAL BAR PRE- ASS'Y</b>			USINAGE ± 0.1 ± 0.004"	TOLERIE ± 0.5 ± 0.020"	
				SOUDAGE ± 0.5 ± 0.020"	N.T.S.	
ITEM	CNC	DEPT.	M-I	QTY.	1	
MAT.	DWG BY <b>B.C.</b>	DATE <b>04-05-06</b>	NO.	<b>004A1558</b>		
	APP. BY	DATE <b>05-06-29</b>				

A	MODIFIED VIEW ITEM #1	05-05-20	M.A.
LET.	MODIFICATION	DATE	INT.

# 005C0803

ITEM	PART #	DESCRIPTION	QT.
1	004A1218	SEAL BAR PRE- ASS'Y	1
2	001-1829	SEAL BAR GUIDE SPACER	2
3	001A6812	SEAL BAR GUIDE	2
4	051-0230	HEX BOLT 1/4-20 x 1 1/4" SS	4
5	051-0740	WASHER 1/4" FLAT S/S	4
6	051-0581	NUT 1/4"-20 NYLON LOCK S/S	4
7	001B1737	SEAL BAR SUPPORT	1
8	008B0677	ESPACEUR DE SOUFFLET	1
9	002A4231	SEAL BAR SUPPORT (SHORT)	1
10	051-0275	SCREW 1/4-20 X 2-1/4" FLAT SLOT S/S	3



**-END VIEW-**

## -TWIN SEAL OPTION-

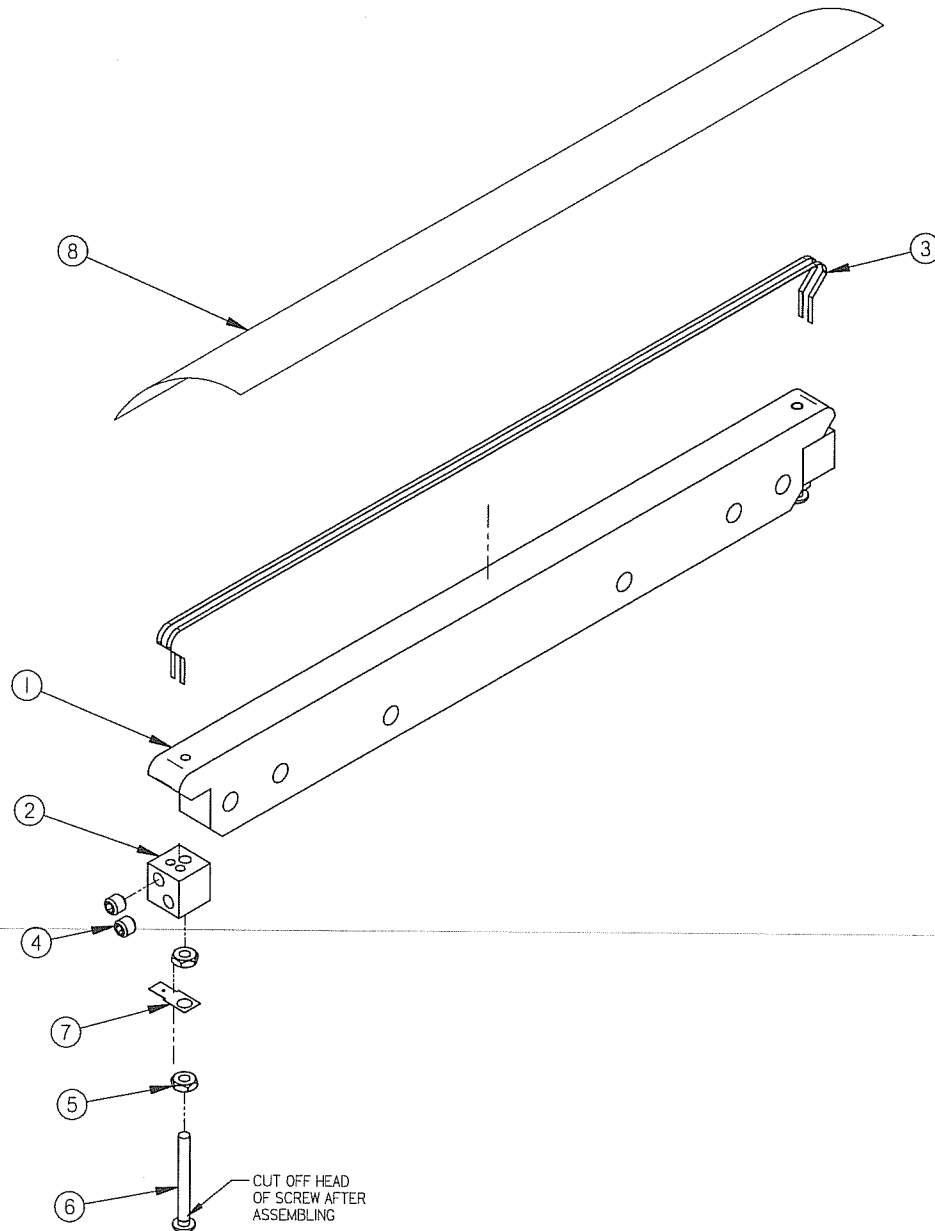
MACHINE		380T		DEPT. TOL. METRIC	INCH	SIPROMAC	
PART		SEAL BAR ASSEMBLY		USINAGE	± 0.1	± 0.004"	ST-GERMAIN DE GRANTHAM QUEBEC CANADA
ITEM		CNC		TOLERIE	± 0.5	± 0.020"	
MAT.		APP. BY	SBU	SOUDAGE	± 0.5	± 0.020"	
DATE		14-08-06		N.T.S.		DEPT.	M
DATE						NO.	2
						005C0803	

LET.	MODIFICATION	DATE	INT.
------	--------------	------	------



# 004A1218

ITEM	PART #	DESCRIPTION	QT.
1	002A0433	SEAL BAR	1
2	002A1275	CONNECTOR	2
3	039-0200	SEALING ELEM. STD TWIN (2x460mm) (3.02)	2
4	052-0395	SET SCREW 1/4"-20 x 5/16" ( OVAL POINT )	4
5	051-0550	NUT #8-32 SS	4
6	052-0250	SCREW #8-32 x 1 1/2" RND SLOT BRASS	2
7	027-0400	CONNECTOR ADAPTOR	2
8	176-0202	TEFLON TAPE .005"x1-1/2" ADHESIVE (330mm) (.042)	1



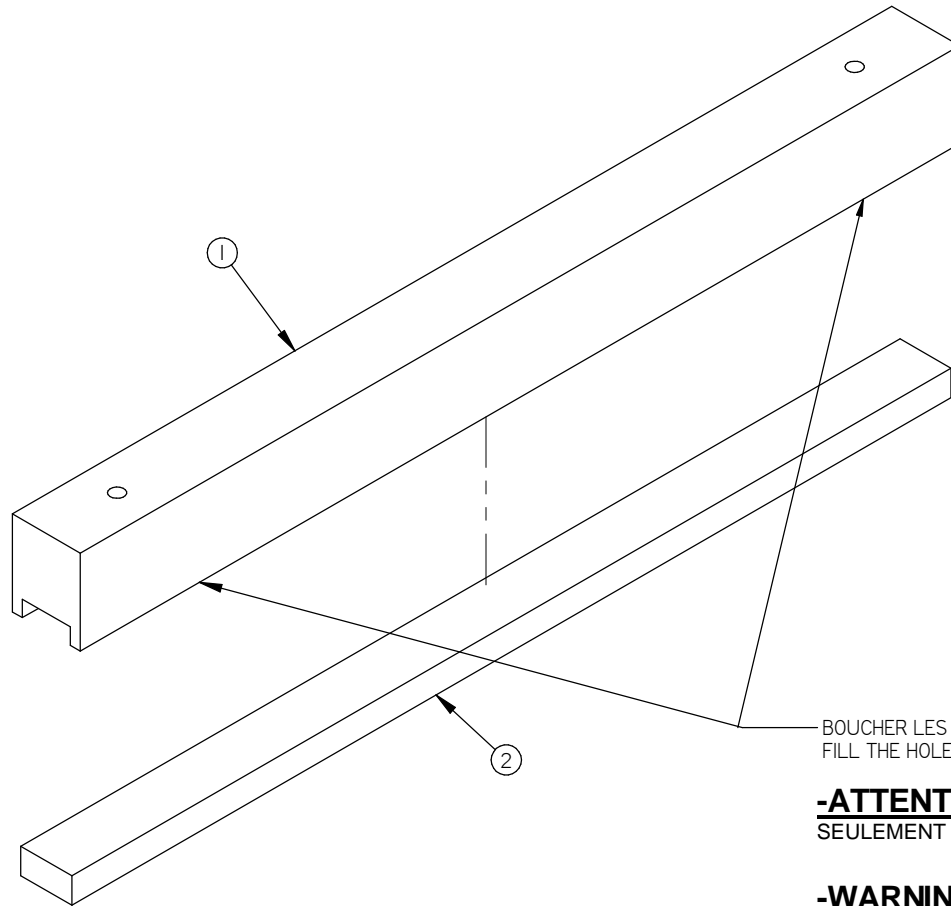
380T	2
380	2
MACHINE	QTY

MACHINE		380 & 380T		DEPT. TOL	METRIC	INCH	SIPROMAC ST-GERMAIN DE GRANTHAM QUEBEC CANADA
PART		SEAL BAR PRE- ASS'Y		USINAGE	± 0.1	± 0.004"	
				TOLERIE	± 0.5	± 0.020"	
ITEM		CNC		SOUDEGE	± 0.5	± 0.020"	MACHINE QTY
MAT.		DWG BY Y.C.		N.T.S.			
		APP. BY		DATE	03-02-18	NO.	LISTE
				DATE	05-06-22	004A1218	

B	MODIFIED VIEW ITEM #1, ADDED 380T	05-05-24	M.A.
A	MODIFICATION #A-0398 (CONNECTEUR)	04-04-19	J.G.
LET.	MODIFICATION	DATE	INT.

# 004A0308

ITEM	PART #	DESCRIPTION	QT.
1	002A0436	UPPER SEAL BAR SUPPORT	1
2	008-0435	UPPER SEAL BAR RUBBER	1



BOUCHER LES TROUS AVEC SILICONE (I69-0200)  
 FILL THE HOLES WITH SILICONE (I69-0200)

**-ATTENTION -:** BOUCHER EN SURFACE  
 SEULEMENT POUR NE PAS NUIRE AU BOULONNAGE

**-WARNING -:** FILL ONLY ON THE SURFACE, SO  
 IT WILL NOT OBSTRUCT THE BOLTING

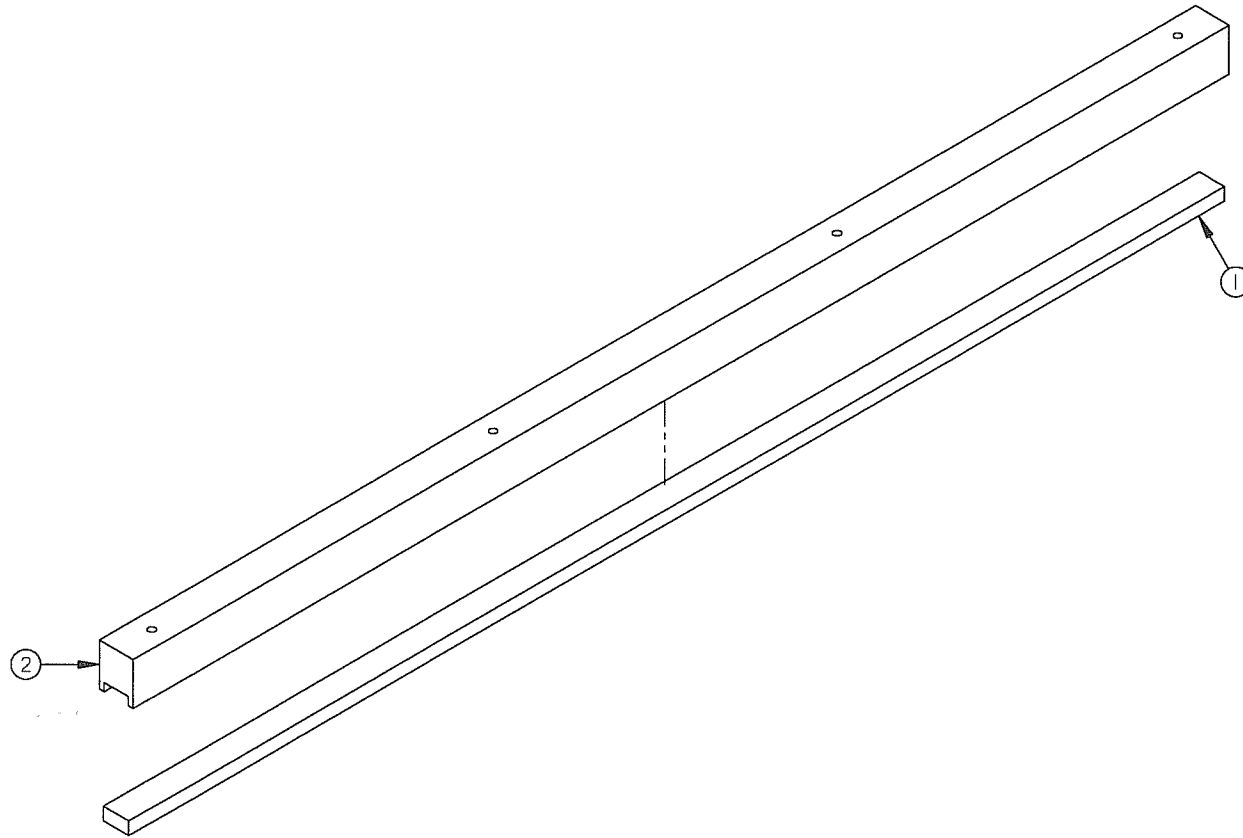
380T	2
380	2
250	1
MACHINE	QTY

MACHINE <b>250 , 380 &amp; 380T</b>		DEPT. TOL. METRIC	INCH	SIPROMAC ST-GERMAIN DE GRANTHAM QUEBEC CANADA
PART <b>UPPER SEAL BAR PRE-ASS'Y</b>		USINAGE ± 0.1	± 0.004"	
ITEM		TOLERIE ± 0.5	± 0.020"	
MAT.		SOUDEAGE ± 0.5	± 0.020"	N.T.S.
CNC		DEPT. <b>M</b>		QTY <b>LIST</b>
DWG BY <b>CF</b>		DATE <b>12-03-26</b>		<b>004A0308</b>
APP. BY		DATE		

<b>D</b>	REDESSINER SE	12-04-02	CF
LET.	MODIFICATION	DATE	INT.

# 004A1559

ITEM	PART #	DESCRIPTION	QT.
1	008A0750	UPPER SEAL BAR RUBBER	1
2	002A1788	LONG UPPER SEAL BAR	1

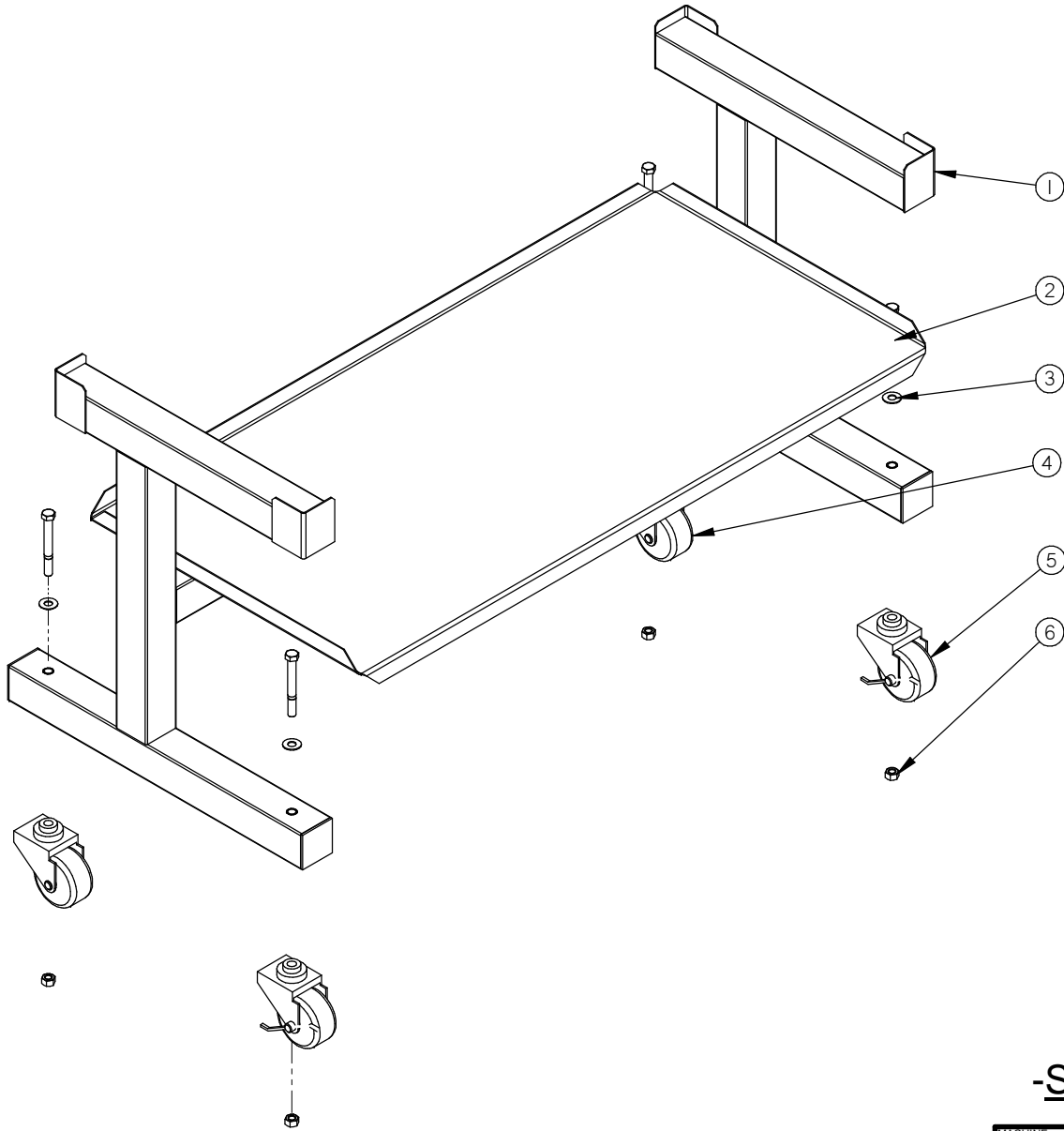


MACHINE	<b>380T</b>		DEPT. TOL. METRIC	INCH	SIPROMAC ST-GERMAIN DE GRANTHAM QUEBEC CANADA
PART	<b>LONG UPPER SEAL BAR PRE-ASS'Y</b>		USINAGE ± 0.1 ± 0.004"		
ITEM	CNC	DATE	TOLERIE ± 0.5 ± 0.020"	N.T.S.	
MAT.	APP. BY	DATE	SOUDAGE ± 0.5 ± 0.020"		
LET.	MODIFICATION	DATE	INT.	DEPT.	NO.
				<b>M</b>	<b>004A1559</b>
					<b>1</b>

LET. | MODIFICATION | DATE | INT.

# 005B0972

ITEM	PART #	DESCRIPTION	QT.
1	004B3994	STAND SHELF PRE-ASSY	1
2	051-0422	BOLT 3/8"-16nc. X 3/4" S/S	4
3	051-0780	WASHER 3/8" FLAT S/S	4
4	130-0190	PL. CASTER SWIVEL W/OUT BRAKE	2
5	130-0195	PL. CASTER SWIVEL W/BRAKE	2
6	051-0620	NUT 3/8"-16 NC S/S	4



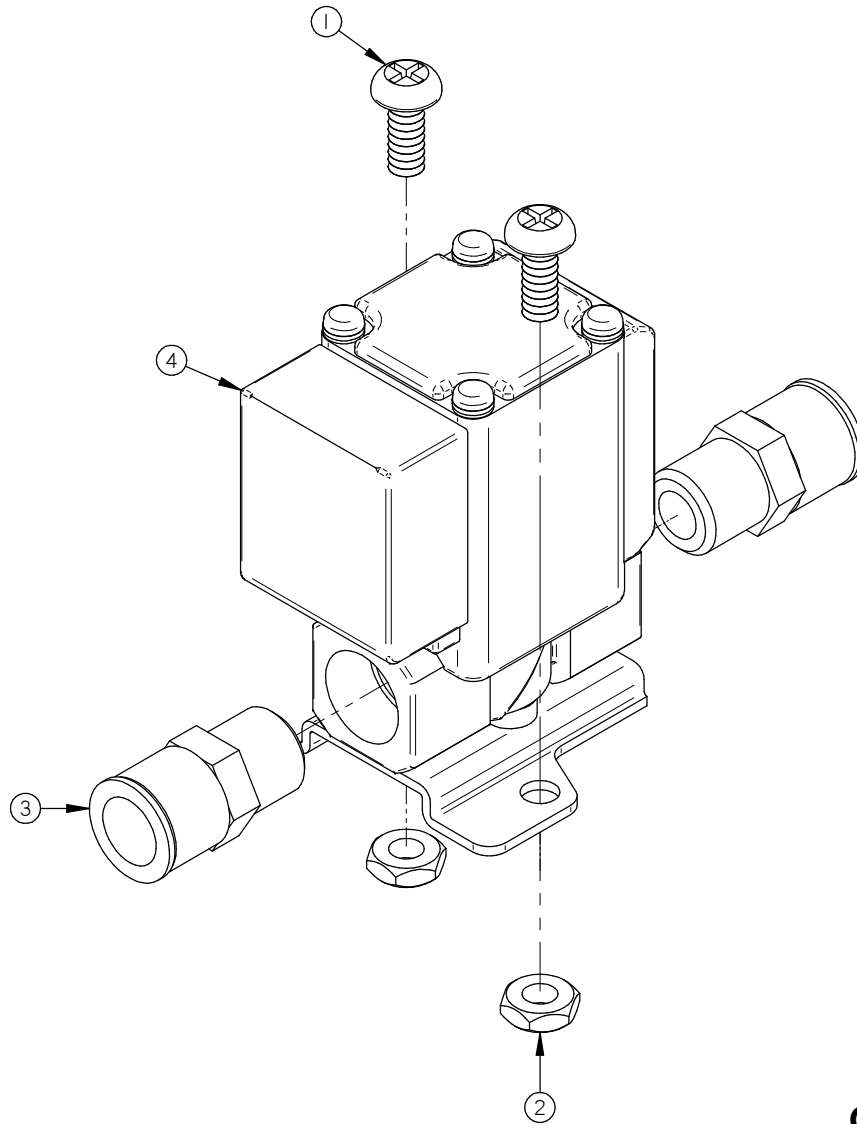
## -STAND OPTION-

LET.	MODIFICATION	DATE	INT.
------	--------------	------	------

MACHINE		DEPT. TOL. METRIC		INCH		SIPROMAC	
380 & 380T		USINAGE	± 0.1	± 0.004"	ST-GERMAIN DE GRANTHAM QUEBEC CANADA		
PART		TOLERIE	± 0.5	± 0.020"			
STAND ASSEMBLY		SOUDAGE	± 0.5	± 0.020"			
ITEM		CNC	N.T.S.		DEPT.	M	QTY.
MAT.		DWG BY	AG	DATE	14-08-04	NO. 005B0972	
		APP. BY		DATE			

# 005A1529

ITEM	PART #	DESCRIPTION	QT.
1	051-0144	SCREW #10-24 N.C 1/2" PAN PHIL. S/S	2
2	051-0571	NUT #10-24 S/S	2
3	102-0410	MALE CONN. 1/4" MNPT x 3/8" T. QUICK	2
4	106-0010	VALVE 2WAY N.C. 24VAC 1/4" NPT (SMC)	1



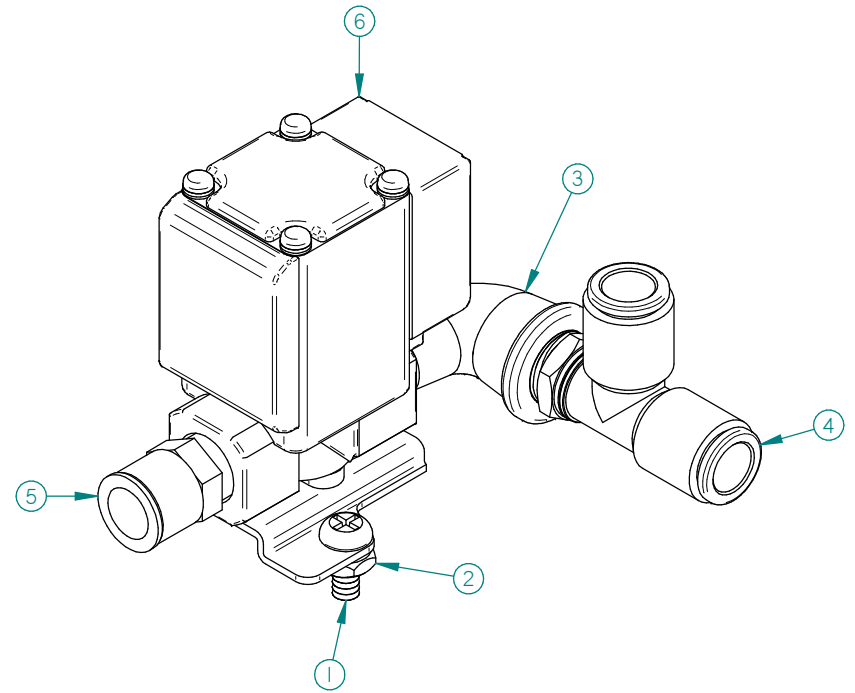
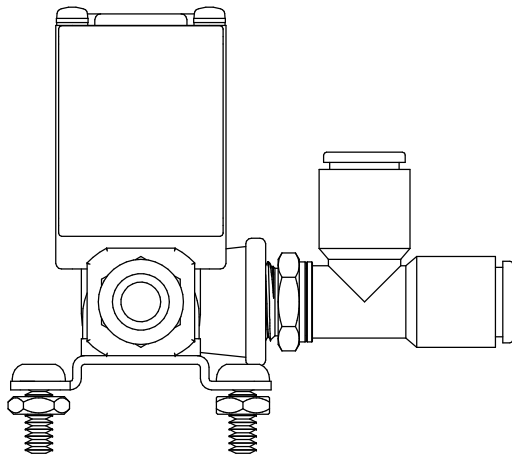
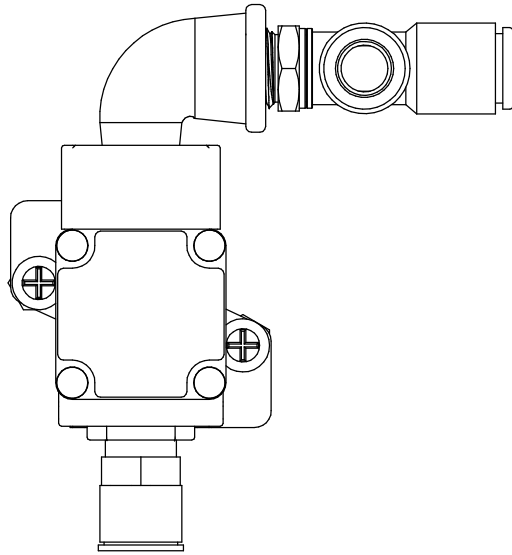
## GAS OPTION

MACHINE		<b>VACCUM</b>		DEPT. TOL.	METRIC	INCH	SIPROMAC ST-GERMAIN DE GRANTHAM QUEBEC CANADA
PART		<b>GAS VALVE ASSY</b>		USINAGE	± 0.1	± 0.004"	
ITEM		CNC		TOLERIE	± 0.5	± 0.020"	
MAT.		3D DWG BY <b>AG</b>		DATE	23-09-14		NO. <b>005A1529</b>
MODIFICATION		DATE		INT.		DEPT. <b>M</b> QTY. <b>1</b>	

LET.	MODIFICATION	DATE	INT.
------	--------------	------	------

# 005A1497

ITEM	PART #	DESCRIPTION	QT.
1	051-0144	SCREW #10-24 N.C 1/2" PAN PHIL. S/S	2
2	051-0571	NUT #10-24 S/S	2
3	100-0065	STREET ELBOW 1/4" NPT SS	1
4	102-0345	BRANCH TEE 1/4" MNPT X 3/8" T.QUICK	1
5	102-0410	MALE CONN. 1/4" MNPTx3/8" T.QUICK	1
6	106-0010	VALVE 2WAY N.C. 24VAC 1/4" NPT(SMC)	1

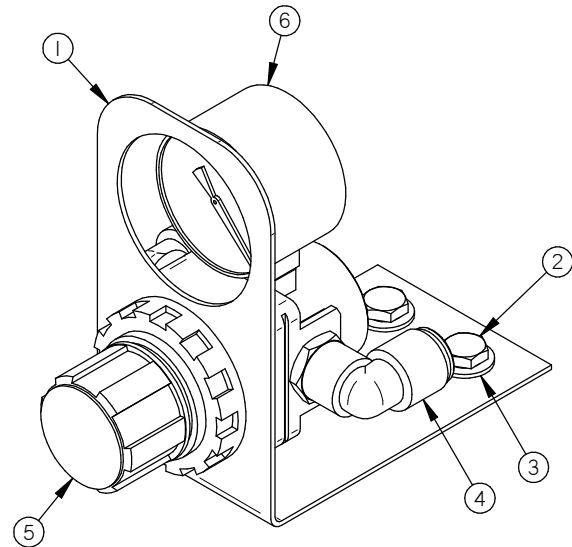
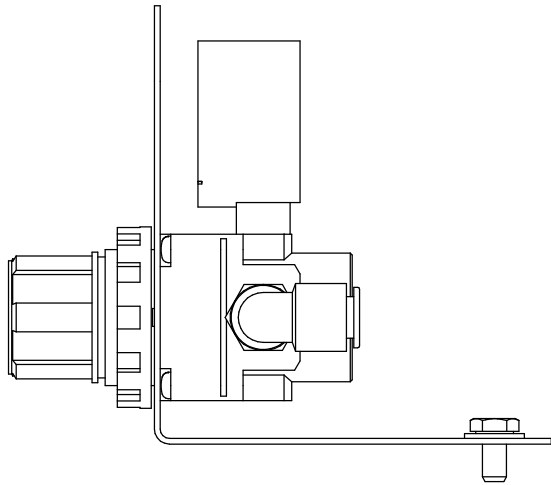
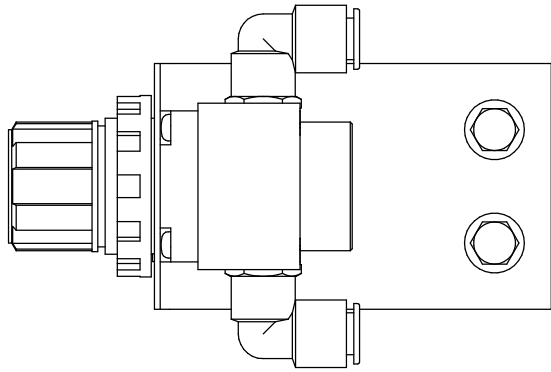


LET.	MODIFICATION	DATE	INT.
------	--------------	------	------

MACHINE		<b>VACCUM</b>		DEPT. TOL.	METRIC	INCH	SIPROMAC ST-GERMAIN DE GRANTHAM QUEBEC CANADA
PART		<b>GAS VALVE ASSY</b>		USINAGE	± 0.1	± 0.004"	
				TOLERIE	± 0.5	± 0.020"	
				SOUDEAGE	± 0.5	± 0.020"	N.T.S.
ITEM		CNC		DEPT.	<b>M</b>		QTY. <b>1</b>
MAT.		DWG BY	<b>SBU (A.G)</b>	DATE	<b>14-06-10</b>		NO. <b>005A1497</b>
		APP. BY		DATE			

# 005A1496

ITEM	PART #	DESCRIPTION	QT.
1	001A6811	AIR REGULATOR SUPPORT	1
2	051-0180	BOLT. HEX. 1/4"-20 NC. x 1/2" S/S	2
3	051-0740	WASHER 1/4" FLAT S/S	2
4	102-0330	ELBOW 1/4" NPT X 3/8" HOSE QUICK	2
5	114-01501	PRESSURE REGUL.0-100 PSI 1/4" NPT W/ NUT	1
6	114-0236	PRESSURE GAUGE 30 PSI 1/8" NPT BOTTOM	1



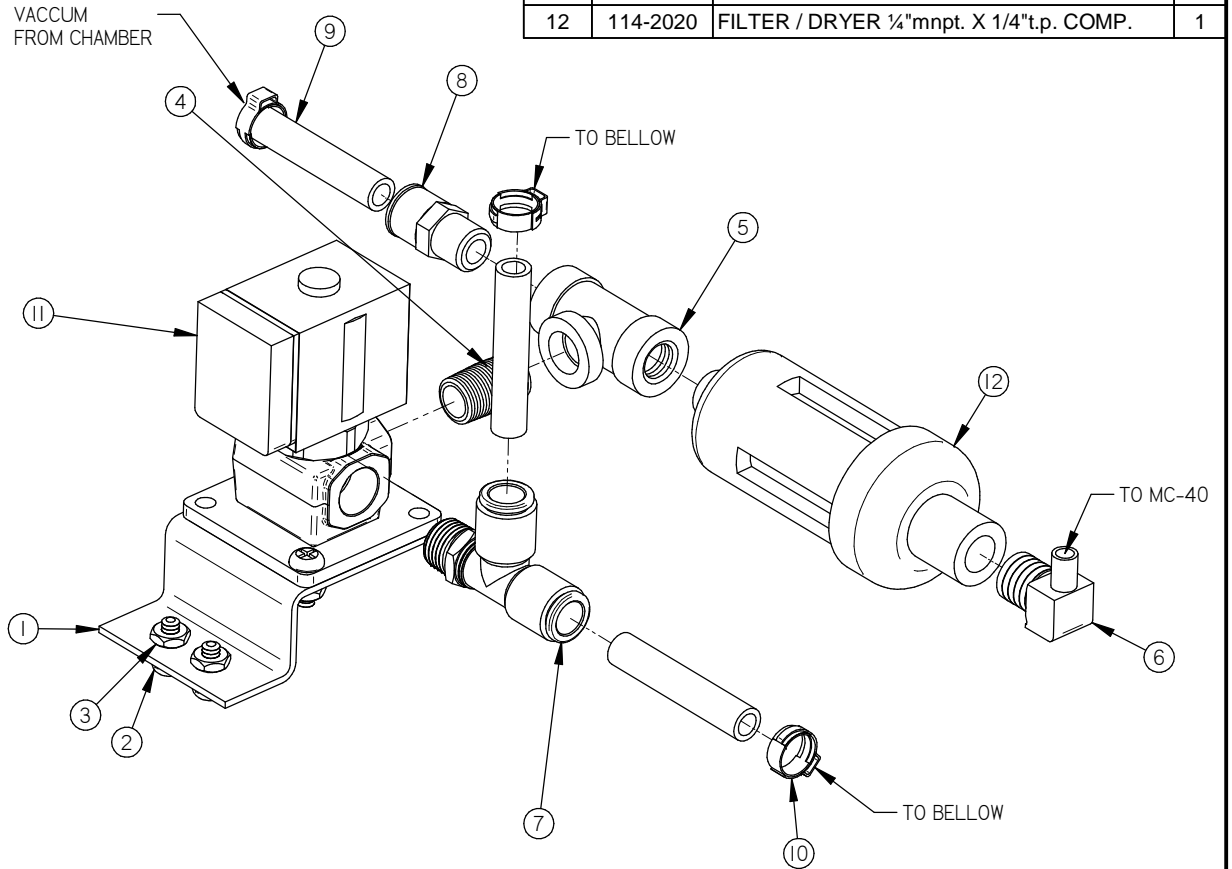
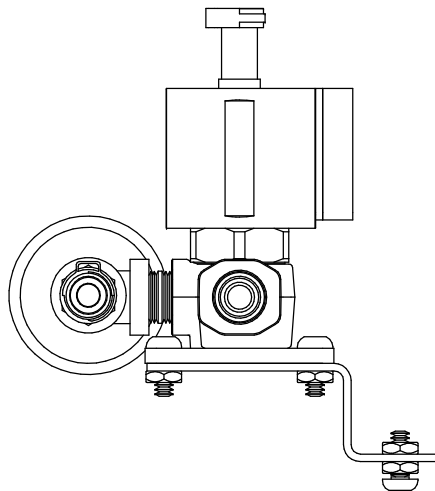
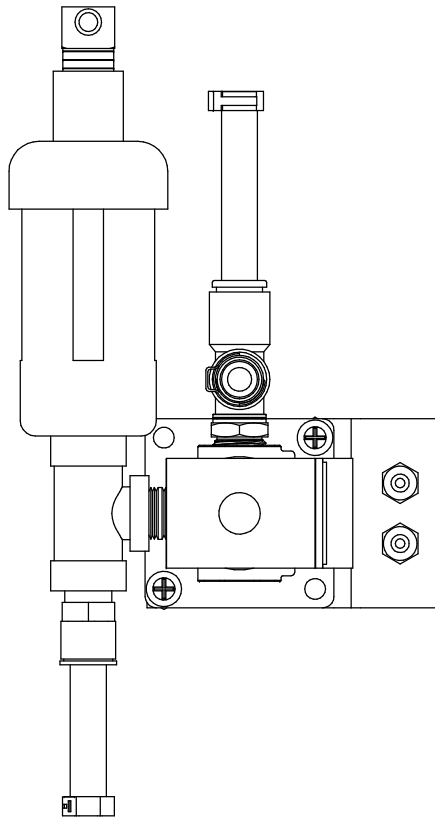
## -AIR REGULATOR OPTION -

MACHINE		DEPT. TOL.	METRIC	INCH	SIPROMAC ST-GERMAIN DE GRANTHAM QUEBEC CANADA
TABLE TOP VACUUM		USINAGE	± 0.1	± 0.004"	
PART		TOLERIE	± 0.5	± 0.020"	
AIR REGULATOR VALVE ASSY		SOUDAGE	± 0.5	± 0.020"	N.T.S.
ITEM	CNC	DEPT.	M	QTY.	1
MAT.	DWG BY SBU (A.G)	DATE	14-06-09	NO.	005A1496
	APP. BY	DATE			

LET.	MODIFICATION	DATE	INT.
------	--------------	------	------

# 005A1495

ITEM	PART #	DESCRIPTION	QT.
1	001A0564	VALVE SUPPORT	1
2	051-0144	SCREW #10-24 N.C 1/2" PAN PHIL. S/S	4
3	051-0571	NUT #10-24 S/S	6
4	100-0225	CLOSE NIPPLE 1/4" NPT SS	1
5	100-0463	TEE 1/4" NPT S/S	1
6	101-0170	ELBOW 90° 1/4 MNPT x 1/4" HOSE	1
7	102-0345	BRANCH TEE 1/4" MNPT X 3/8" T.QUICK	1
8	102-0410	MALE CONN. 1/4" MNPT x 3/8" T.QUICK	1
9	104-0060	TUBE 3/8" OD x 1/4" ID POLYETHYL.	3
10	105-0218	EAR CLAMP 3/8" S/S	3
11	106-00701	VALVE 3WAY 24V 1/4" NPT	1
12	114-2020	FILTER / DRYER 1/4" mnpt. X 1/4" t.p. COMP.	1



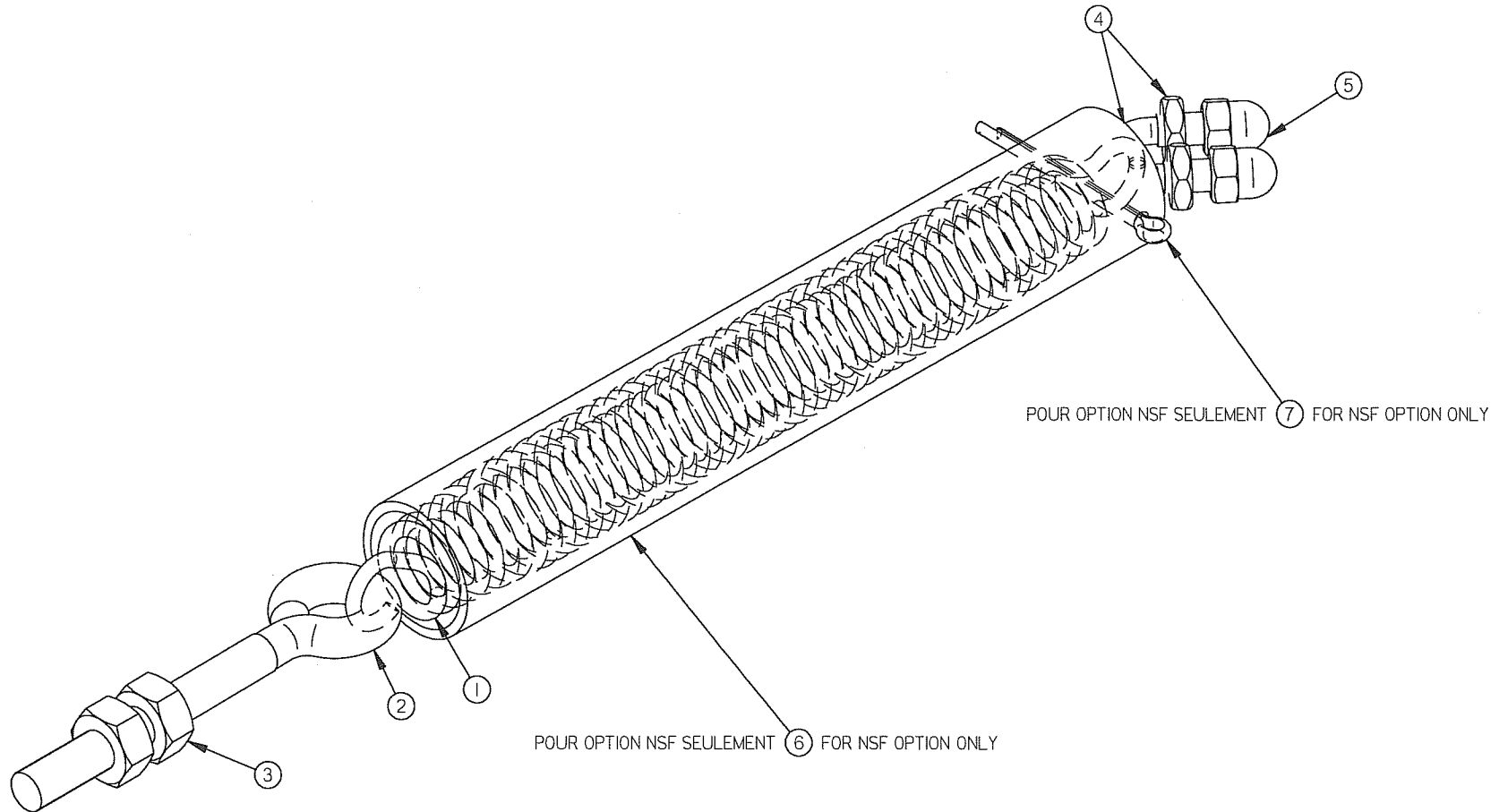
LET.	MODIFICATION	DATE	INT.
------	--------------	------	------

MACHINE		<b>380 &amp; 380T</b>		DEPT. TOL.	METRIC	INCH	SIPROMAC ST-GERMAIN DE GRANTHAM QUEBEC CANADA
PART		<b>BELLOWS VALVE ASSY</b>		USINAGE	± 0.1	± 0.004"	
ITEM		CNC		TOLERIE	± 0.5	± 0.020"	
MAT.		APP. BY		SBU (A.G)	DATE	13-11-14	N.T.S.
				DEPT.	M	QTY.	1
				NO.	<b>005A1495</b>		



# 004A1225

ITEM	PART #	DESCRIPTION	QT.
1	009A0151	SPRING GRAY	1
2	056-0150	EYE BOLT 1/4"-20 x 3" ZINC	1
3	051-0580	NUT 1/4"-20 S/S	2
4	056-2500	U-BOLT CABLE CLAMP THRD #10-24	1
5	051-0570	NUT #10-24 ACORN SS	2
6	008A1603	SPRING PROTECTION TUBE	1
7	056-0118	COTTER PIN 3/32" x 1" S/S	1



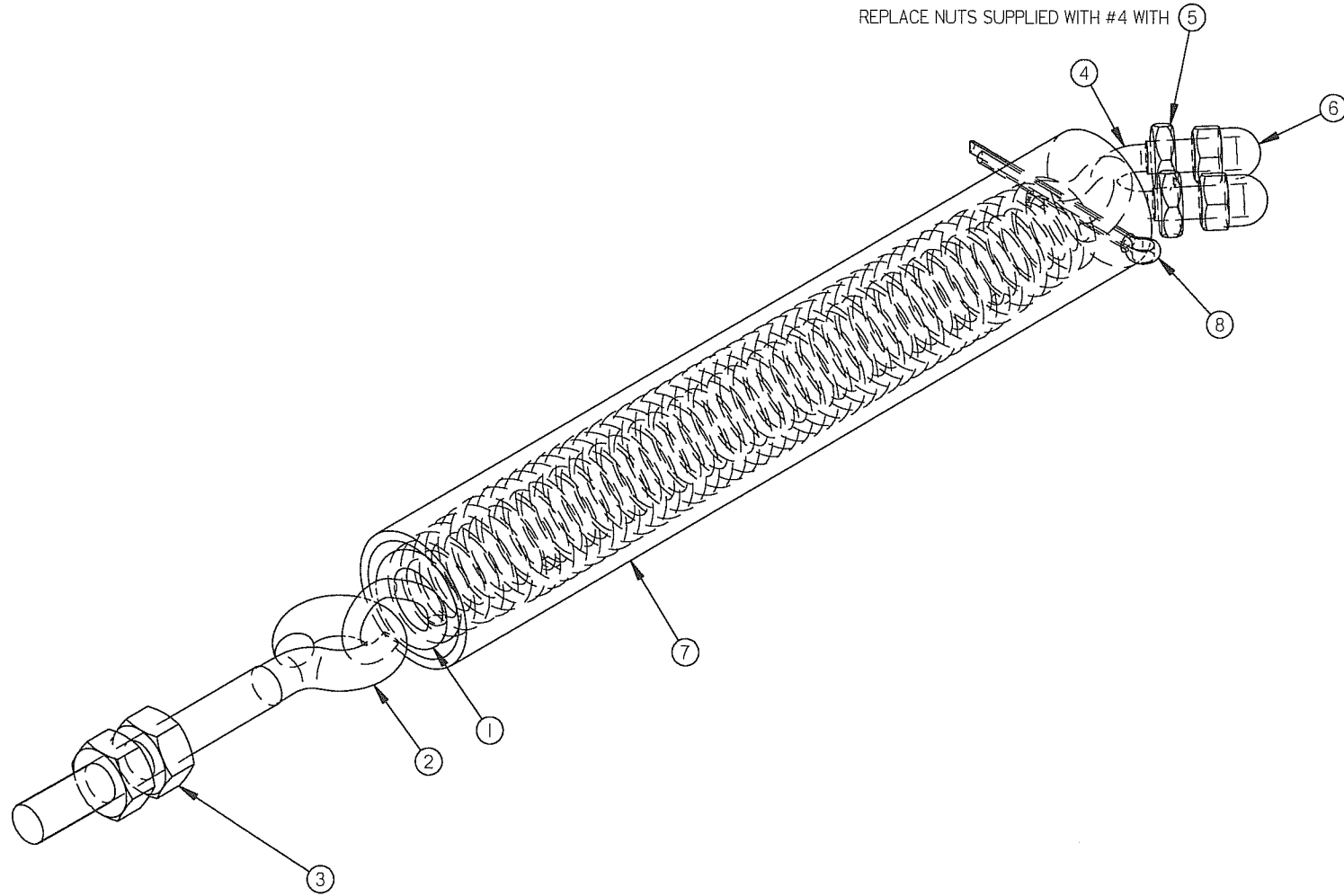
E	AJOUTER ITEM 008A1603 & 056-0118 (NSF)	10-11-09	J.G.
D	ADDED ITEM #3 051-0580 QTY : 2	05-05-05	M.A.
C	ADDED 380T	05-02-17	M.A.
B	009A0151 WAS 004A1225	04-12-07	M.A.
A	MODIFIER QUANTITE DANS 380 (4>2)	03-09-04	J.P.
LET.	MODIFICATION	DATE	INT.

MACHINE	<b>250 &amp; 380</b>		DEPT. TOL. METRIC	INCH	SIPROMAC ST-GERMAIN DE GRANTHAM QUEBEC CANADA
PART	<b>SPRING PRE-ASSEMBLY</b>		USINAGE ± 0.1	± 0.004"	
			TOLERIE ± 0.5	± 0.020"	
			SOUDAGE ± 0.5	± 0.020"	N.T.S.
ITEM	CNC	DEPT.	M-(M)		QTY. 2
MAT.	DWG BY L.T.	DATE 03-02-17	NO. <b>004A1225</b>		
	APP BY	DATE 10-11-11			

# 004A1224

ITEM	PART #	DESCRIPTION	QT.
1	009A0152	SPRING BLACK	1
2	056-0150	EYE BOLT 1/4"-20 x 3" ZINC	1
3	051-0580	NUT 1/4"-20 S/S	2
4	056-2500	U-BOLT CABLE CLAMP THRD #10-24	1
5	051-0571	NUT #10-24 S/S	2
6	051-0570	NUT #10-24 ACORN SS	2
7	008A1603	SPRING PROTECTION TUBE	1
8	056-0118	COTTER PIN 3/32" x 1" S/S	1

REPLACE NUTS SUPPLIED WITH #4 WITH 5



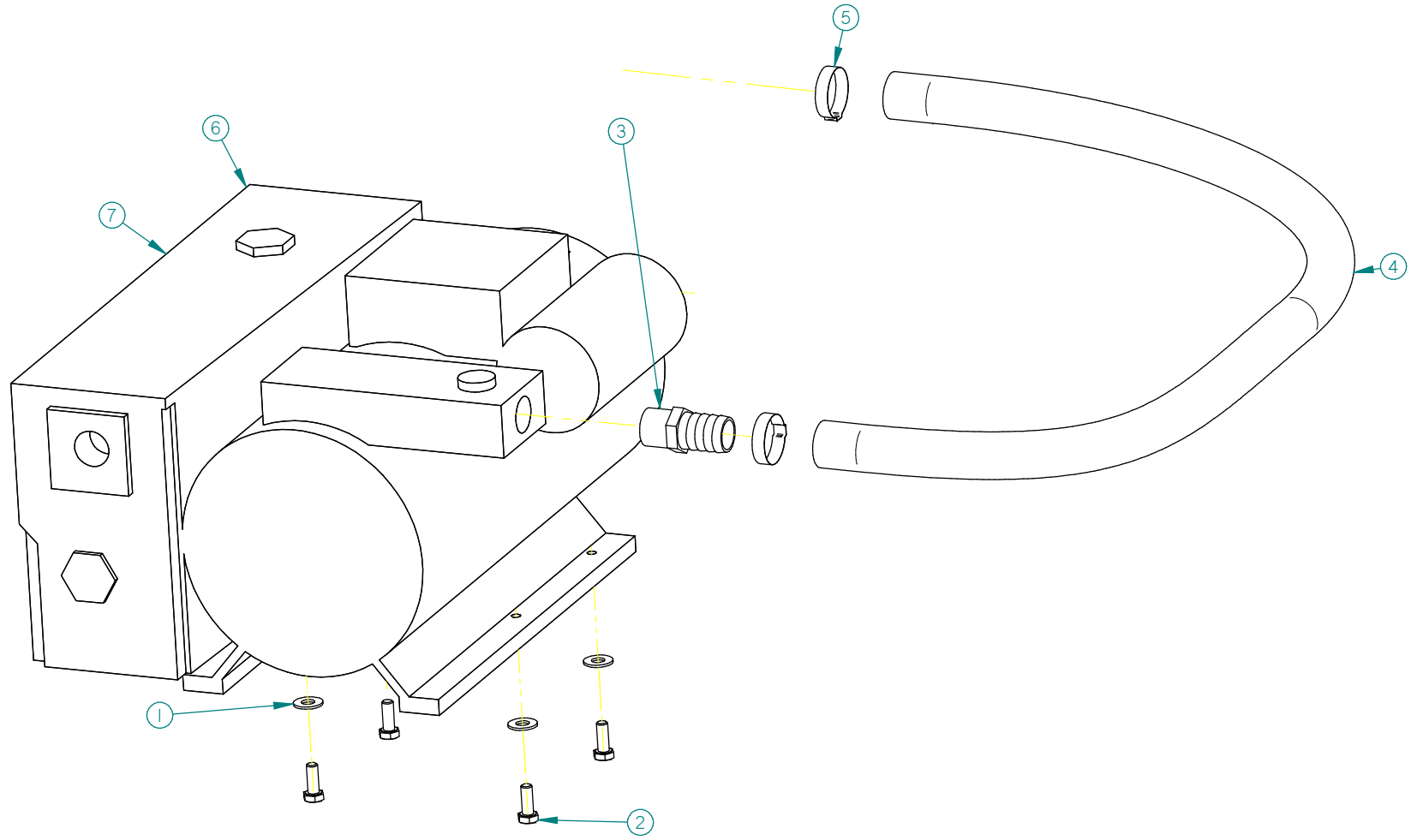
380T	4
380	2
350D	2
350	2
300D	2
300	2
MACHINE	QTY

F	REPLACE NUT SUPPLIED W/ #4 BY 051-0571	12-04-04	CF
E	AJOUTER ITEM 008A1603 & 056-0118 (NSF)	10-11-09	J.G.
D	ADDED ITEM #3 051-0580 QTY : 2	05-05-05	M.A.
C	ADDED 380T	05-02-03	M.A.
B	009A0152 WAS 077-0002	04-12-07	M.A.
A	AJOUTER 380 DANS CARTOUCHE	03-09-04	J.P.
LET.	MODIFICATION	DATE	INT.

MACHINE	DEPT	TOL	METRIC	INCH	NO
300,300D, 350, 350D 380 & 380T		USINAGE ± 0.1	± 0.004"		
		TOLERIE ± 0.5	± 0.020"		
		SOUDAGE ± 0.5	± 0.020"		
PART				N.T.S.	
SPRING PRE-ASSEMBLY				M-(M) QTY LISTE	
ITEM	CNC	DATE	NO		
MAT.	DWG BY	DATE	NO		
	APP. BY	DATE		004A1224	

# 004-0346

ITEM	PART #	DESCRIPTION	QT.
1	051-0740	WASHER 1/4" FLAT S/S	4
2	051-0950	BOLT M6 x 16 S/S	4
3	100-1205	STRAIGHT 1/2"MNPTx3/4" HOSE BARB S/S	1
4	104-0106	HOSE	1
5	105-0238	EAR CLAMP 23.9-27.1 SS	2
6	125-1020	BUSCH KB-0020 115V/1PH/60HZ	1
7	125-1021	BUSCH KB-0020 220-240V/1PH/50-60HZ	1

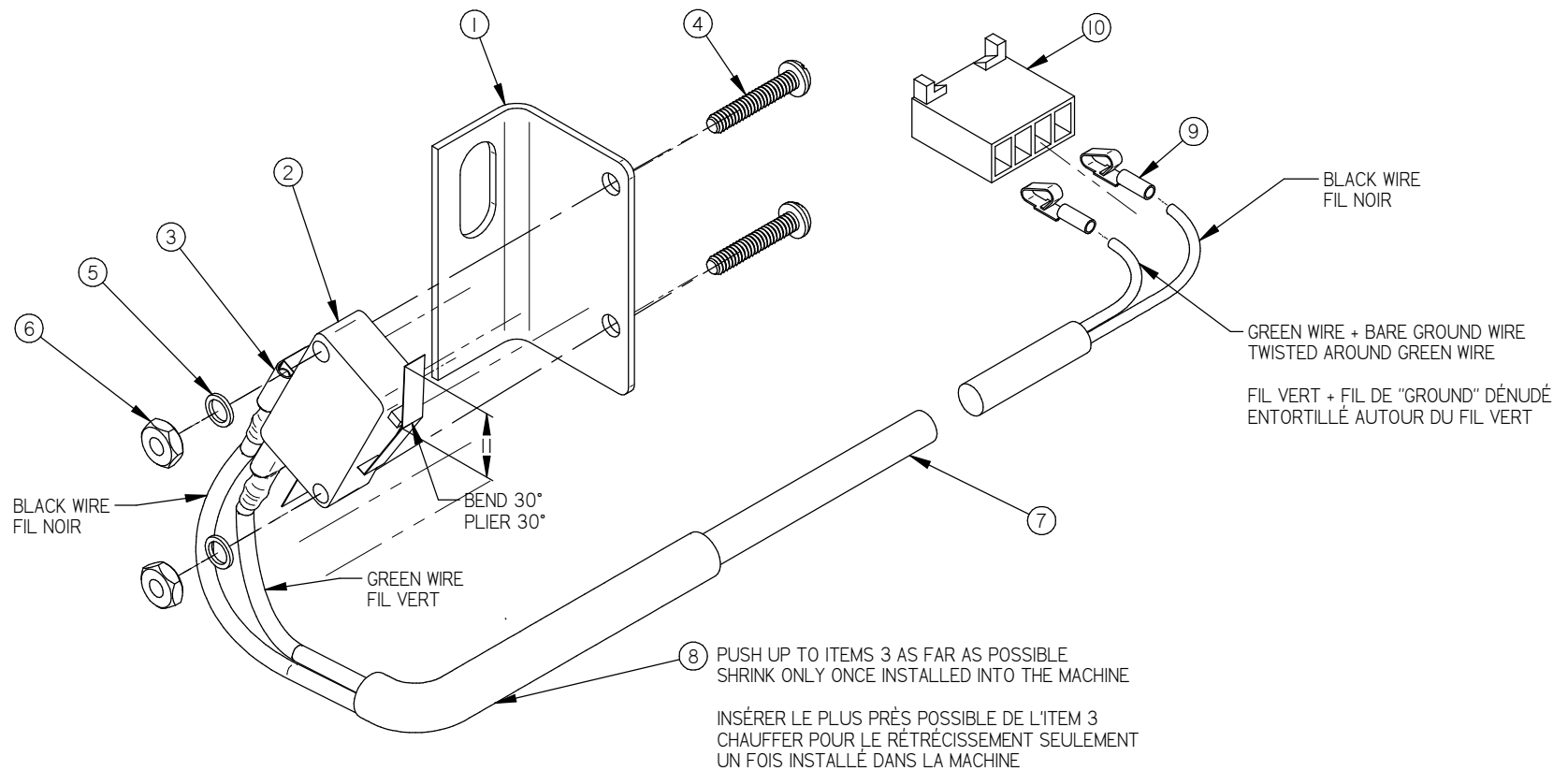


B	HOSE ADDED	14-06-10	A.G.
A	ADDED 380T	06-01-26	M.A.
LET.	MODIFICATION	DATE	INT.

MACHINE		DEPT. TOL. METRIC		INCH	SIPROMAC	
350, 350D, 380 & 380T		USINAGE	± 0.1	± 0.004"	ST-GERMAIN DE GRANTHAM	
PART		TOLERIE	± 0.5	± 0.020"	QUEBEC CANADA	
"BUSCH" PUMP INSTALATION		SOUDEAGE	± 0.5	± 0.020"	N.T.S.	
ITEM	CNC	DEPT.	M	QTY.	1	
MAT.	DWG BY: E.T. (A.G)	DATE	02-03-11	NO.	004-0346	
	APP. BY	DATE				

# 004-0261

ITEM	PART #	DESCRIPTION	QT.
1	001-0944	SWITCH SUPPORT	1
2	026-0590	LIMIT SWITCH LONG ARM	1
3	027-0030	TERMINAL FEMALE 0.187" INSULATE	2
4	051-0080	SCREW 4-40 x 5/8" RND SLOT SS	2
5	051-0715	WASHER #4 LOCK SS	2
6	051-0540	NUT #4-40 HEX S/S	2
7	030-0631	22AWG/4COND.PVC,SHIELDED,300V. (1.7M)	1
8	030-0711	SHRINK 3/8" BLACK 6" (0.52')	1
9	036-0850.	0.156" CENTERLINE CRIMP TERMINAL	2
10	036-0820	0.156" CENTERLINE CRIMP HOUSING	1



MACHINE <b>250, 350, 350D, 380, 380T</b>		DEPT. TOL. METRIC	INCH	SIPROMAC ST-GERMAIN DE GRANTHAM QUEBEC CANADA
PART <b>LIMIT SWITCH ASS'Y</b>		USINAGE ± 0.1 ± 0.004	TOLERIE ± 0.5 ± 0.020	
ITEM _____		CNC _____	DEPT. <b>M</b>	QTY. <b>1</b>
MAT. _____		DWG BY <b>CF</b>	DATE <b>12-03-26</b>	NO. <b>004-0261</b>
		APP. BY _____	DATE _____	

H	REDRAWN SE & LISTED ELECT. PART	12-03-26	CF
LET.	MODIFICATION	DATE	INT.