

Gaser Portioning Machine



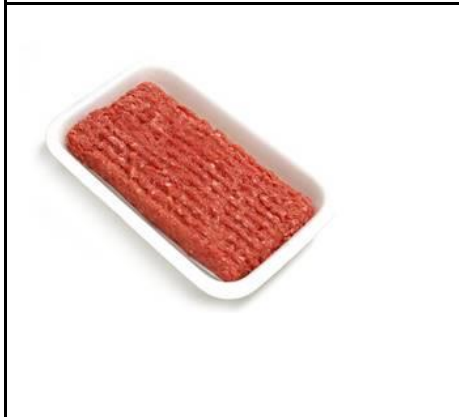
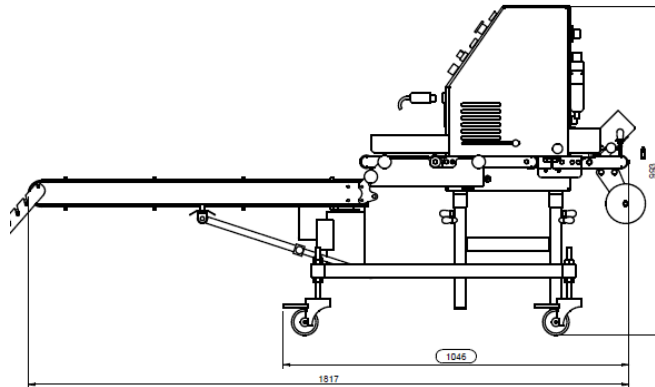
This setup is to work with piston stuffer and vacuum filler. Table is included with the machine.

Conveyor belt is extra, and it is adjustable.






This setup is to work with Grinders or Mixer Grinder. The stand or table is included with the machine and is adjustable with minimum height of 527mm and maximum 764 mm.

The conveyor belt is highly recommendable to purchase with this machine to let the worker do his/her job in a not forced position while connecting this machine with grinder as the output height is low.



Meat brick type output

When customer wants meat brick type output, they must choose shaper from one of the standard measurements (115, 100 or 90mm width, all of them have max height of 35mm (adjustable height))

	<p>Free-flow Type Output When customer want this type of output, they need free flow ramp/shaper with standard measurement of 115mm or 125mm</p>
	<p>Cylinder type Output When customer wants cylinder type of output, customer must specify the diameter of the cylinders, and then no. of holes will be determined in the standard shaper of 115mm width. Connector can be attached with both fillers and grinders.</p>
	<p>Paper Rolls The machine needs to work with paper Rolls, and they can be 108mm width or 120mm width. For meat brick output paper size must be bigger than width of meat brick output. For free flow the output paper size can be smaller than width of free-flow output.</p>