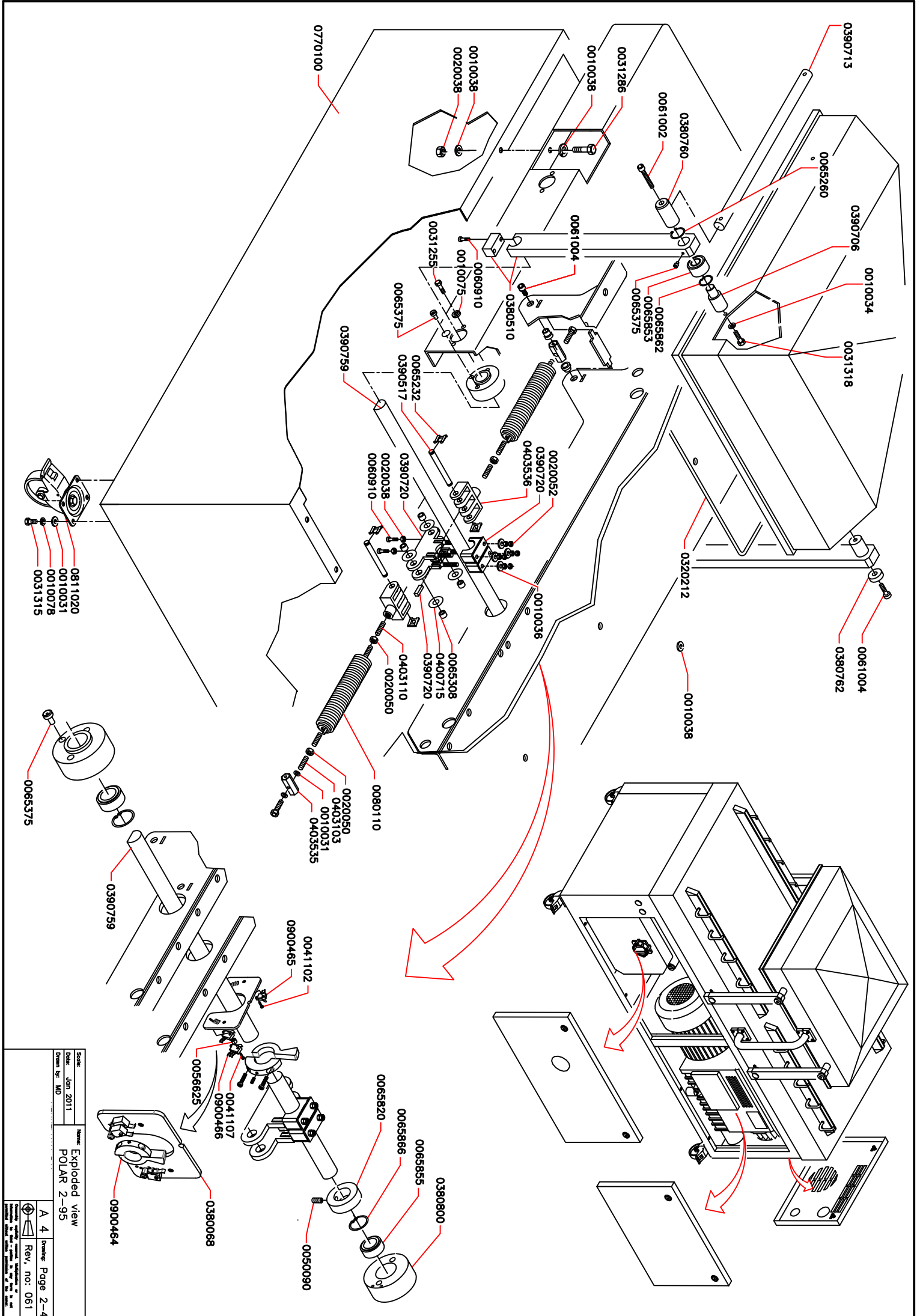


Scale:	0
Date:	June 2012
Drawn by:	MD
Name:	POLAR 2-95
Sheet:	1 of 4
Rev. no.:	042

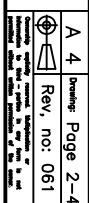
A 4 Drawing: Page 1-4

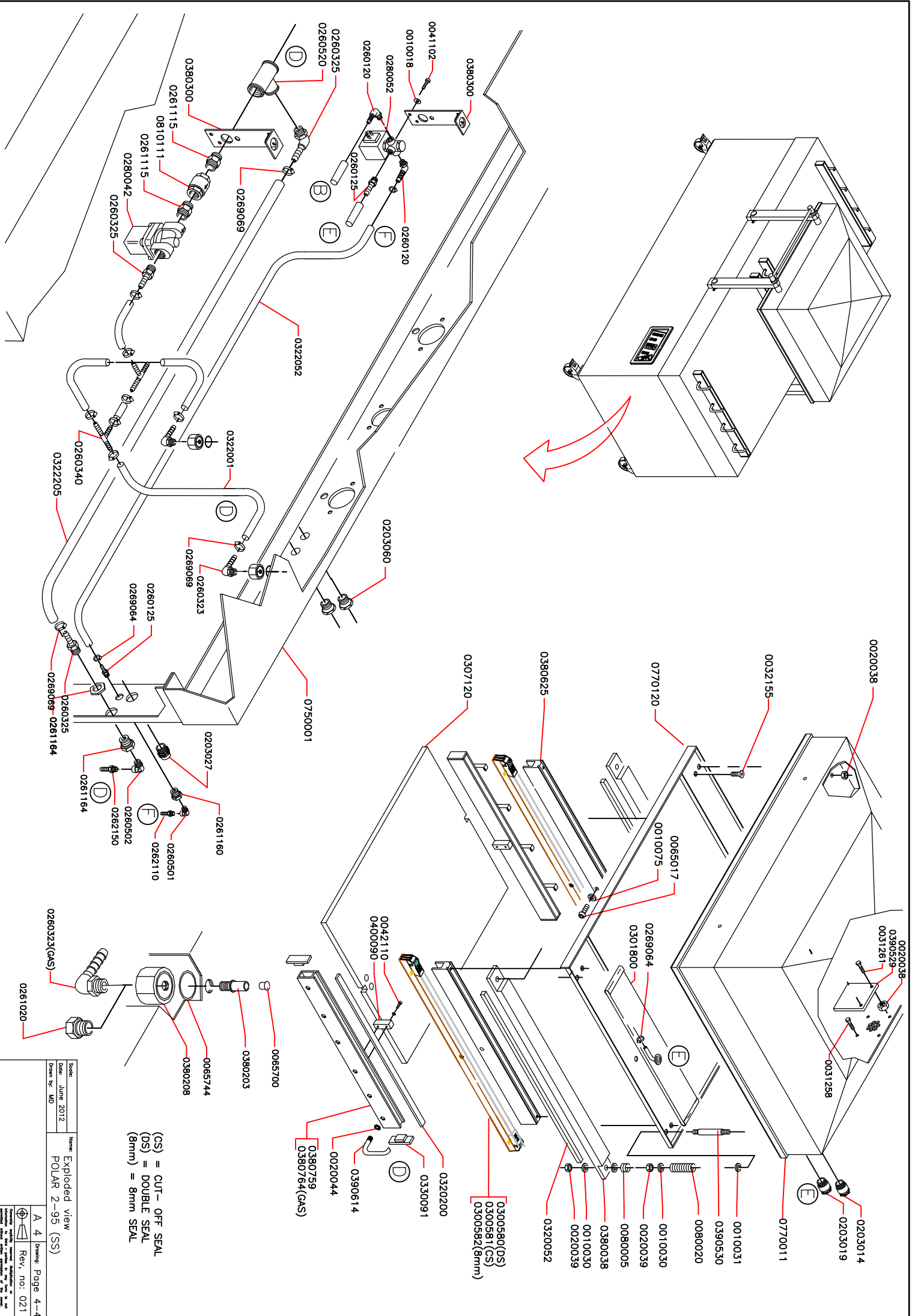
Rev. no. 042

© 2012 Honeywell International Inc. All rights reserved. Honeywell, the Honeywell logo, and the logo of the company are trademarks of Honeywell International Inc. in the United States and other countries.



Scale: _____
 Date: Jan 2011
 Drawn By: MD
 Name: Exploded view
 POLAR 2-95
 A 4 Drawing Page 2-4
 Rev. no: 061





Scale: June 2012
 Date: June 2012
 Drawn by: WD
 Name: Exploded view
 POLAR 2-95 (SS)

(CS) = CUT-OFF SEAL
 (DS) = DOUBLE SEAL
 (8mm) = 8mm SEAL